

Thermowell for Clamping the Stem

Solid drilled for welding
for plain bimetal stems

Model
SK4.B

Application

Thermowells are amongst others applied to protect thermometer stems against process-related chemical and / or mechanical loads.

Furthermore a thermowell, which remains at the measuring point, enables the unproblematic dismounting of the thermometer for maintenance or repair.

Standard Versions

For plain bimetal stems, our model B1

Construction Type

Solid drilled, for low to medium loads by the process (flows, pressures, temperatures and vibrations).

Process Connection

For welding
Details see reverse side

Connection to Thermometer Stem

With lateral fixing screw

Internal Diameter d1

Ø 7 mm suitable for stem-Ø dF 6 mm
Ø 9 mm suitable for stem-Ø dF 8 mm

Total Length (Standard)

73, 88, 108, 148 mm
Details and installation length U1 see reverse side

Material

1.4571 (316 stainless steel)

Process Temperature / Process Pressure

Maximum allowed process temperature: 500 °C
Maximum allowed process pressure: 25 bar

Concrete process conditions (medium, flow rate, pressure, temperature) and the thermowell version (dimension, material) could cause a reduction of the above mentioned maximum allowed values, see **load diagrams DIN 43 772**.

We can make a **thermowell calculation** for your concrete field of application (see special version and options) upon request.



Special Versions and Options among others

- Other thermowell-Ø upon request
- Other thermowell- / installation lengths L / U1 upon request
- Other materials upon request
- Test report 2.1
- Inspection certificate 2.2
- Test certificate 3.1 for the material (copy of the material quality certificate of the basic material with re-stamping certificate)

Ordering Information

Model	SK4.B
Internal-Ø d1	7 or 9 mm
Total length	L
Installation length	U1
Material	1.4571

Example: SK4.B, d1=9, L= 88, U1=60, 1.4571



Sales and Export South, West, North

ARMATURENBAU GmbH

Manometerstraße 5 • D-46487 Wesel - Ginderich
Tel.: +49 (0)28 03/91 30-0 • Fax: +49 (0)28 03/10 35
armaturenbau.com • mail@armaturenbau.com

Subsidiary Company, Sales and Export East

MANOTHERM Beierfeld GmbH

Am Gewerbepark 9 • D-08344 Grünhain-Beierfeld
Tel.: +49 (0)37 74/58-0 • Fax: +49 (0)37 74/58-545
manotherm.com • mail@manotherm.com

8.8151

04/15

Dimensions, Lengths, corresponding Thermometer Stems

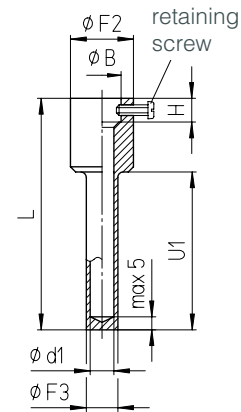
Dimensional data (mm)

SK4.B

Thermowell diameter and connection dimensions

F2	d1	F3	B	H
24	7	12 ¹⁾ / 17	14,5	9
	9	14 ¹⁾ / 17		

¹⁾ for $L \leq 108$ mm



Thermowell total length, installation length and thermometer stem length

Standard thermowell lengths, suitable stem lengths L

Standard thermowell length		Suitable stem length
Total length	Install. length	Model B1
$L^{+1)}$	$U1^{+2)}$	
73	45	58
88	60	73
108	80	93
148	120	133

¹⁾ $L = U1 + 28$ mm

Other thermowell lengths

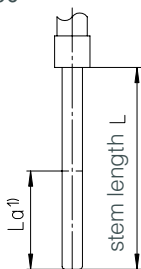
Calculation

- Thermowell length when existent stem thermowell length $L = L(\text{stem}) + 15$ mm
- Stem length when existent thermowell stem length $L = L(\text{thermowell}) - 15$ mm

Thermometer Stem

Corresponding thermometer stem

Models B1
plain stem,
Form 1 DIN 13 190



¹⁾ $L_a =$ active stem length

The active stem length L_a can be found on the thermometer data sheets.

Installation example

The installation length $U1$ of the thermowell has to be selected that the active length L_a is surrounded by the medium. $U1 \geq L_a + 6$ mm

