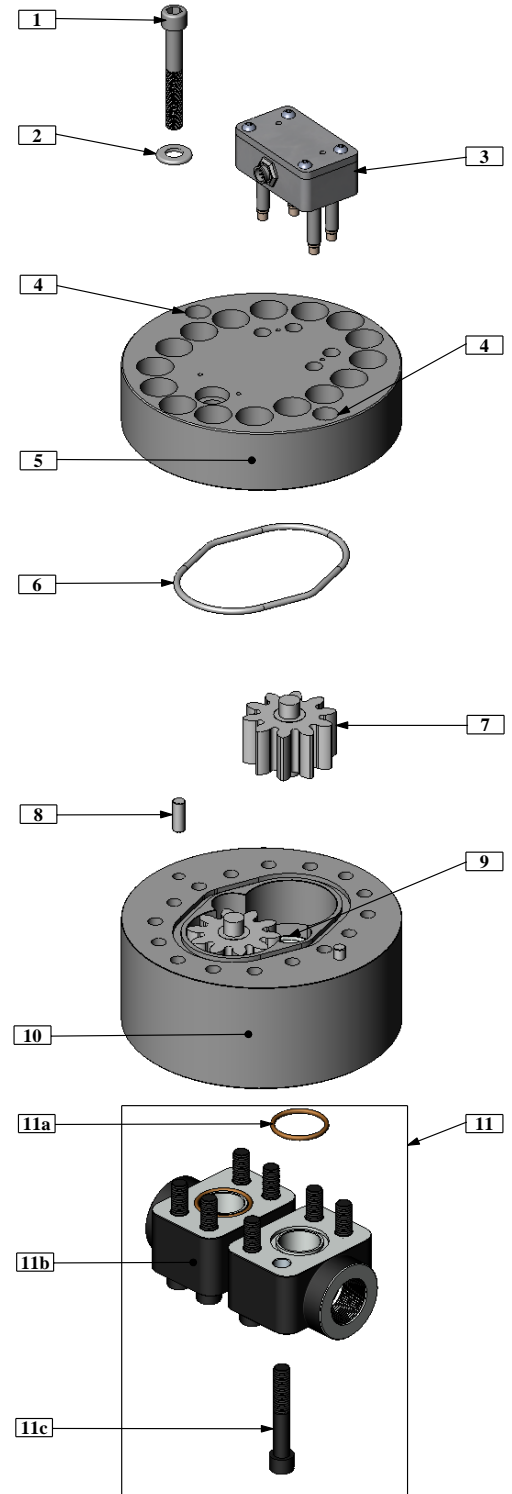


# MAINTENANCE GUIDE FOR THE JVx-80KL & 90KL SERIES FLOW METER

**Cleaning, inspecting or repairing a JVx-80KL & 90KL Series gear flow meter is easily accomplished by following the procedures below.**

1. Remove the Sensor (3) from the flow meter body Upper Housing (5). Using a 9/64 hex key, loosen the 2 mounting screws inside the sensor.
2. Remove the hex bolts (1) with a 3/8 hex key.
3. Turn 2 of the hex bolts into the extraction bolt holes (4) until they make contact with the lower housing (10). Using these bolts for separating the housings helps to reduce any stress on the locating pins and gear shafts.
4. With the extraction bolts turned down to the lower housing, give each bolt a half-turn, alternating them, until the housings have separated enough to where you can lift the upper housing (5) straight off the locating pins. **CAUTION: When lifting the top housing off, make sure the gears stay in the lower housing. If they come out with the upper housing, they may fall off and damage the lower housing or the gears themselves.**
5. After separation, inspect the gears (7) and bearings (9). Carefully remove the gears and thoroughly clean them with solvent. Special care must be observed when cleaning or flushing either the upper (5) or lower housing (10) as the bearing could dislodge from the housing. **NOTE: Do not remove the bearings. For bearing repairs the meter should be returned to the factory.**
6. After cleaning, add lubrication if possible. The gears can be reinserted into their previous positions. Check for free and easy rotation of the gears.
7. Replace the O-ring (6) if it is damaged or deformed.
8. Keep the meter housings parallel during reassembly and align the index marks on the housings so they are on the same side. **NOTE: Do not force the housings together using a hammer or other similar device. Make sure to turn out the bolts from the extraction holes.**
9. Replace the hex bolts and torque all the bolts to 50 ft/lbs, once one bolt is torqued, move to the bolt that is opposite it and repeat until all bolts have been torqued. Over tightening will not cause damage, but may restrict operation if surfaces are not completely clean.
10. After reassembly, gently blow air into the meter so the gears spin. This should be clearly audible given a moderate background noise level.
11. **The bearings should be lubricated prior to storage. Never allow contact with water without immediately drying and lubricating after use.**



JVx-80KL w/ QUAD-4 Shown

# CROSS REFERENCE GUIDE FOR JVx-80KL SERIES SPARE PARTS

| Part - Qty. per meter<br>[Drawing Ref. #] | JVx-80KL                                   | JVx-90KL                         |
|---|--|----------------------------------|
| Locating Pin - 2<br>[8]                   | BZ25280<br>LP-JVA-80KL                     |                                  |
| Gear Assembly - 2<br>[7]                  | BG23080<br>JGR-80KL                        | BG23090<br>JGR-90KL              |
| PTFE O-Ring - 1<br>[6]                    | BO10185<br>COT-80KL                        |                                  |
| FKM O-Ring - 1<br>[6]                     | B010180<br>COV-80KL                        |                                  |
| Bolts - 16<br>[1]                         | BZ05700<br>JSC-80KL 1/2-20 x 2.5           | BZ05500<br>JSC-90KL 1/2-20 x 3.5 |
| Washers - 16<br>[2]                       | BZ20000<br>Washer - 1/2 SAE Grade 8        |                                  |
| Flange Assembly - 2<br>[11]               | BC80165<br>90DEG - NPT - JVM - 90 - 303 SS |                                  |

**Table Format:**

|                    |                       |
|--------------------|-----------------------|
| AG15030            | ← AW Part #           |
| LP-CG Locating Pin | ← AW Part Description |