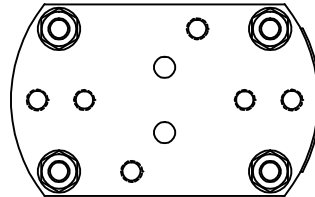
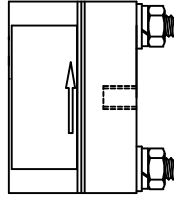
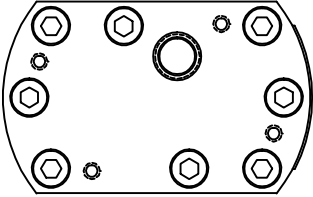
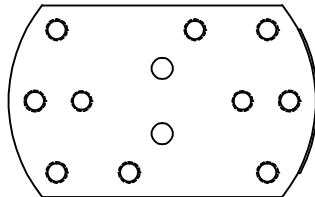
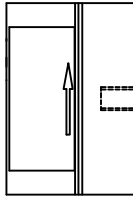
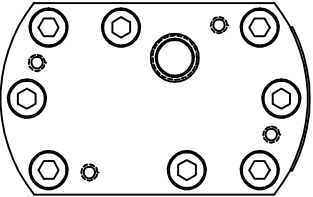


SLGF



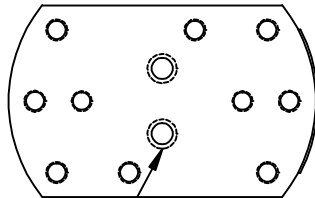
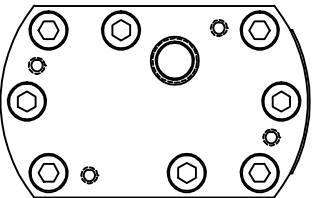
\* UNTHREADED CORNERS w/ LONG BOLTS  
\* NO PORT THREADS

SLGA



\* STANDARD CORNER BOLTS  
\* NO PORT THREADS

SLG



Threaded Port Holes

\* STANDARD CORNER BOLTS  
\* PORT THREADS

**AW-LAKE COMPANY USE ONLY**

THIS PRINT, INCLUDING THE INFORMATION CONTAINED IN IT, IS THE PROPERTY OF AW-LAKE COMPANY. IT IS CONSIDERED PROPRIETARY IN NATURE AND MAY NOT BE USED OR DISCLOSED OUTSIDE OF AW-LAKE COMPANY, EXCEPT UNDER PRIOR WRITTEN AGREEMENT. ANY MODIFICATIONS MADE TO OR COMMENTS WRITTEN ON THIS DRAWING BY UNAUTHORIZED PERSONNEL WILL VOID THIS DRAWING.



6888 INDUSTRIAL DRIVE  
FRANKSVILLE, IN 46036  
TEL. # (317) 854-5800  
FAX # (317) 854-5810

TITLE: HPM-SLG METERS			
DRAWING NUMBER: HPMS723B		PART NUMBER: —	
DATE: 02-19-98	REV: B	DRAWN BY: SHANE WILSON	
CHECKED BY: C.H.	PAGE 1	OF 1	SCALE: NONE