

FUNCTION

The MC 307 Pressure Relief Vent is a stainless steel, pressure actuated unit that is engineered to limit excessive internal pressure to 130 percent of tank design. The standard model vent set at 25 PSIG will exhaust 26,700 SCFH at 32.5 PSIG and conforms to the emergency venting requirement code for MC 307 tanks having a total exposed surface area up to 700 square feet.

The stainless steel valve seat is equipped with a replaceable Tef-O-Sil "O-Ring."

The unit doubles as an unloading device, since the valve body is tapped $\frac{3}{4}$ " N.P.T. to accommodate the addition of inlet fittings for air unloading of transports. Provision is also made for a pressure gauge to be attached to the vent body.

An optional incorporation of a small vacuum section in the valve seat is also available upon request. It should be noted that this section, due to its limited size, may not be adequate enough to prohibit tank implosion. For additional vacuum protection, refer to "Girard Magnetic Vacuum Breakers" for tank transports.

The entire vent is designed to be easily removed from the tank vehicle for inspection and/or cleaning.

This vent meets the "leaks less than one liter" surge requirements of 178.345.10 (b) (3).



Styles	Description
<p>7 lbs. with accessories - 5 lbs., 8 oz. without</p>	<p>MC-307BT-(WV*) Vent with a 3" swivel nut. Mounts on a 3" nipple and seals against a solid Teflon® gasket.</p>
<p>5 lbs., 10oz with accessories 4 lbs., 2 oz. without</p>	<p>MC-307ST-(WV*) Stub end vent. Lower housing terminates in a straight stub end. Welds to the dome cover.</p> <p>MC-307MT-(WV*) Same as the above, but the stub end is on an 18 degree angle to conform to the curvature of the dome cover. Note: $\frac{3}{4}$" & $\frac{1}{4}$" N.P.T. tap are not available in this style.</p>
<p>5 lbs., 10oz with accessories 4 lbs., 2 oz. without</p>	<p>MC-307FT-(WV*) Vent with a 3" TTMA drilled tank truck flange. Mounts to a 3" TTMA drilled companion flange on the transport. Supplied with a Teflon® envelope flange gasket.</p>

* With vacuum, add WV to part number for vents equipped with vacuum section

MATERIALS OF CONSTRUCTION

All metallic parts	Stainless Steel
Valve Seat	Tef-O-Sil (Teflon®/Silicone)
Gaskets	Teflon®

PERFORMANCE

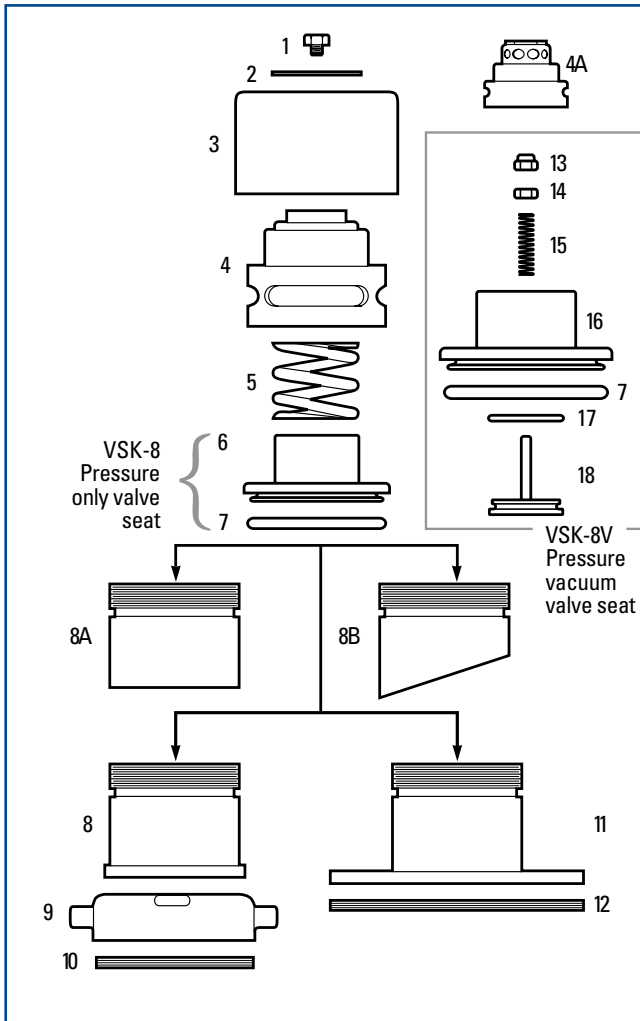
At 25#, (standard) PSIG vent cracks at 27 PSIG and relieves 26,700 SCFH when it is fully open at 32.5 PSIG. At 30#, vent cracks at 32 PSIG and relieves 38,200 SCFH when it is fully open at 39 PSIG.

At 35#, vent cracks at 37 PSIG and relieves 63,600 SCFH when it is fully open at 45.5 PSIG.

ACCESSORIES

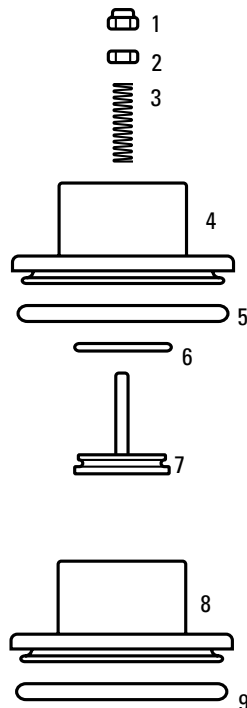
Air inlet assemblies (Ball Valve, Chicago, etc.) are an available option. Please specify when ordering. 0-60 PSI liquid filled gauges are also available.

This vent meets the "leaks less than one liter" surge requirements of 178.345.10 (b) (3).



Part #	Description
1	202001 Bolt
2	202002 Identification & Rating Disc
3	202003-1 Rain Cover
4	202004-1 Upper Housing-pressure only
4A	202004 Upper Housing - Pressure Vac. Vents
5	202005 Pressure Spring
6	202006D VSK-8 Spring Retainer
7	202008D Tef-O-Sil Pressure "O"-Ring
8	202011 Lower Housing -B Model
8A	202011A Lower Housing - S Model
8B	202011B Lower Housing - M Model 18 Degree Bias
9	202012 Swivel Nut-B Model
10	3-TR Solid Teflon® Gasket
11	202014 Lower Housing -Flange-F Model
12	202015 Teflon® Envelope Flange Gasket
13	202039A Locknut
14	202039 Nut
15	202038 Vacuum Spring
16	202006DV VSK-8V Spring Retainer
17	202037 Tef-O-Sil "O"-Ring (Vacuum)
18	202035 Vacuum Poppet

Valve Seat Kits



Part #	Description
1	202039A Locknut
2	202039 Nut
3	202038 Vacuum Spring
4	202006DV VSK-8V Spring Retainer
5	202008D Tef-O-Sil Pressure "O"- Ring
6	202037 Vacuum "O"- Ring
7	202035 Vacuum Poppet
8	202006D VSK-8 Spring Retainer
9	202008D Tef-O-Sil Pressure "O"- Ring