



## 2/2-way Solenoid Valve Servo Operated for High Pressure

- Push-over solenoid system
- special versions, up to 250 bar, up to DN 12
- stainless steel body

The servo-assisted Type 2400 valve has a servo-piston with a 2-way servo-control. It is designed for high pressures.

The speciality of this valve design lies in the layout of the seat and sealing element. An additional radial seal makes very good sealing possible.

The tapered sealing element of the servocontrol permits the switching of high pressure at relatively low coil power.

Technical data	
<b>Body material</b>	stainless steel, brass and brass, nickel-plated
<b>Valve internals</b>	stainless steel
<b>Sealing material</b>	PEEK/FKM; PCTFE/FKM; PTFE/FKM
<b>Media</b>	neutral gases and fluids
<b>Medium temperature</b>	
PEEK/FKM	-10 to +80 °C
PCTFE/FKM	-10 to +80 °C
PTFE/FKM	-10 to +80 °C
<b>Ambient temperature</b>	max. +55 °C
<b>Viscosity</b>	ca. 21 mm/s
<b>Operating voltage</b>	24/DC 24/220-230 V / 50 Hz other voltages on request
<b>Voltage tolerance</b>	±10%
<b>Cycling rate</b>	ca. 80/min
<b>Duty cycle</b>	100 % continuous rating
<b>Electrical connection</b>	Cable plug (part of the delivery)
<b>Protection class</b>	IP65 with cable plug
<b>Installation</b>	as required, preferably with actuator upright

## Technical data

Orifice [mm]	Kv-value water [m/h]	Port connection	Pressure range		Electrical power consumption			Response times		Weight [kg]
			AC [bar]	DC [bar]		Inrush	Hold	Opening [ms]	Closing [ms]	
5.0	0.6	G 1/4	1–250	1–200	AC	85 VA	48 VA/20 W	100	300	1.2
8.0	1.0	G 3/8	1–250	1–210				bis	bis	1.4
12.0	2.6	G 1/2	1–250	1–160	DC	20 W	20 W	200	500	1.95

Kv value [mm/h]: Flow rate value for water, measured at +20 °C and 1 bar pressure differential over a fully opened valve.

Pressure data [bar]: Overpressure with respect to atmospheric pressure

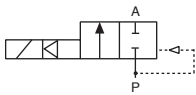
Response times [ms]: measured at valve outlet at 6 bar and +20 °C

Opening: pressure build-up 0...90%

Closing: pressure relief 100...10%

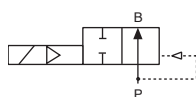
## Circuit functions of the valve

### Circuit function A



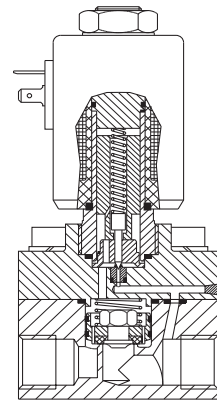
2/2-way valve,  
servo-assisted,  
normally closed,  
with servo-piston

### Circuit function B

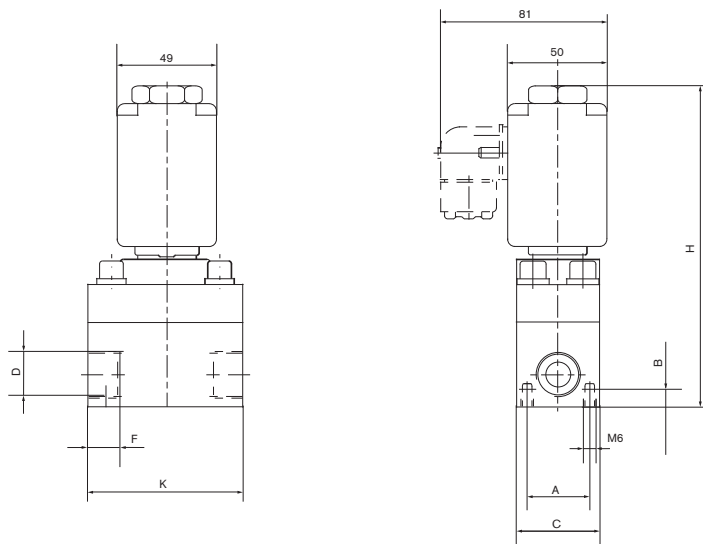


2/2-way valve,  
servo-assisted,  
normally open,  
with servo-piston

### Schematic diagram



## Dimensions [mm]



DN	D	A	B	C	F	H	K
5,0	G 1/4	30	12	∅ 50	8	126	∅ 50
8,0	G 3/8	29	8	∅ 40	8	126	∅ 65
12,0	G 1/2	29	8	∅ 40	14	153	∅ 75

## Ordering chart for valves (other versions on request)

Circuit function	Orifice [mm]	Port connection	Kv-value water [m/h]	Pressure range [bar]	Body material	Seal material	Voltage/frequency [V/Hz]	Item no.
A	5.0	G 1/4	0.6	1-200	Brass	PEEK/FKM	24/DC	002 366
				1-250	Brass	PEEK/FKM	220-230/50	002 367
	8.0	G 3/8	1.0	1-210	Brass	PEEK/FKM	24/DC	002 369
				1-250	Brass	PEEK/FKM	24/50	132 436
							230/50	002 370
	12.0	G 1/2	2.6	1-250	Stainless steel	PCTFE/FKM	24/DC	000 520
							24/50	134 690
							220-230/50	000 422
				1-160	Brass. nickel-plated	PTFE/FKM	24/DC	006 725
							24/50	000 284
220-230/50							000 455	

- Circuit function B (normally open) and EEx ed IIC T4 model on request
- For spare part kit, please refer to Spare Part Catalogue.

To find your nearest Bürkert facility, click on the orange box → [www.buerkert.com](http://www.buerkert.com)