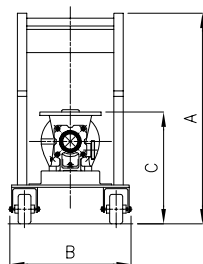
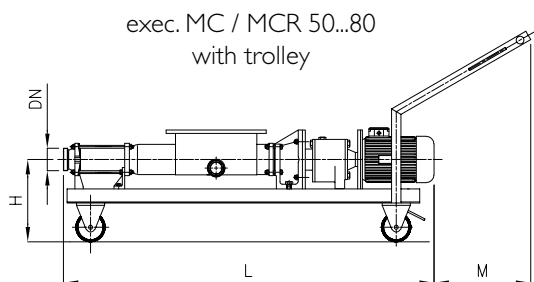


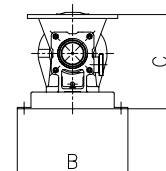
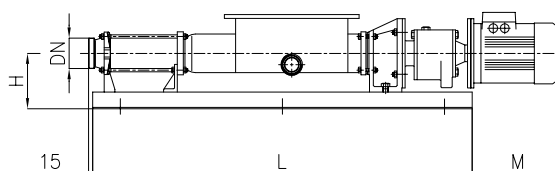


# Pressing - Transfer of pressed grapes, mash, musts and wine

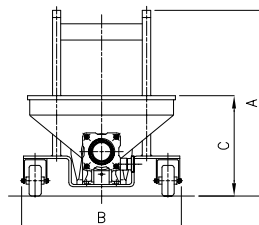
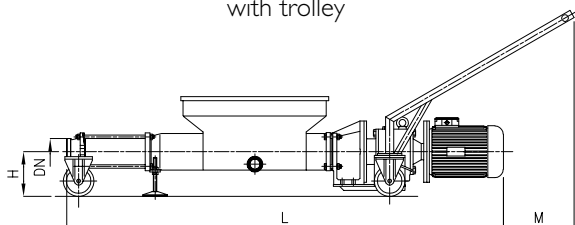
## PROGRESSIVE CAVITY PUMPS



exec. MC / MCR 100...160  
with fixed base



exec. MC / MCR 100...160  
with trolley



## OVERALL DIMENSIONS

Dimensions not binding

PUMP MODEL	Inlet & Outlet port		A	B	C	H	1 stage		2 stages		B	C	H	L	M
	DIN 11851	Oenological					L	M	L	M					
MC 50	TRAM. / 50	Ø 50	860	460	425	300	1370	150	1520	150	-	-	-	-	-
MC 65	TRAM. / 65	Ø 60	870	460	450	325	1700	180	1900	180	-	-	-	-	-
MC / MCR 80	TRAM. / 80	Ø 80	900	510	495	355	1720	270	2000	130	-	-	-	-	-
MC / MCR 100	TRAM. / 100	Ø 100	908	781	491	217	2136	347	2634	155	400	380	220	1740	370
MC / MCR 115	TRAM. / 100	Ø 100	908	781	491	217	2216	307	2718	155	400	380	220	1740	440
MC / MCR 110	TRAM. / 100	Ø 100	908	781	491	217	2486	347	-	-	400	380	220	2175	370
MC / MCR 125	TRAM. / 100	Ø 120	908	822	524	274	2553	101	3212	=	400	420	240	2175	410
MC / MCR 130	TRAM. / 100	Ø 120	908	822	524	274	3011	-	-	-	460	420	240	2550	460
MC / MCR 150	TRAM. / 150	Ø 150	893	836	530	280	2940	176	-	-	460	500	300	2550	460
MC / MCR 160	TRAM. / 150	Ø 150	893	836	530	280	3550	60	-	-	460	500	300	3150	360

