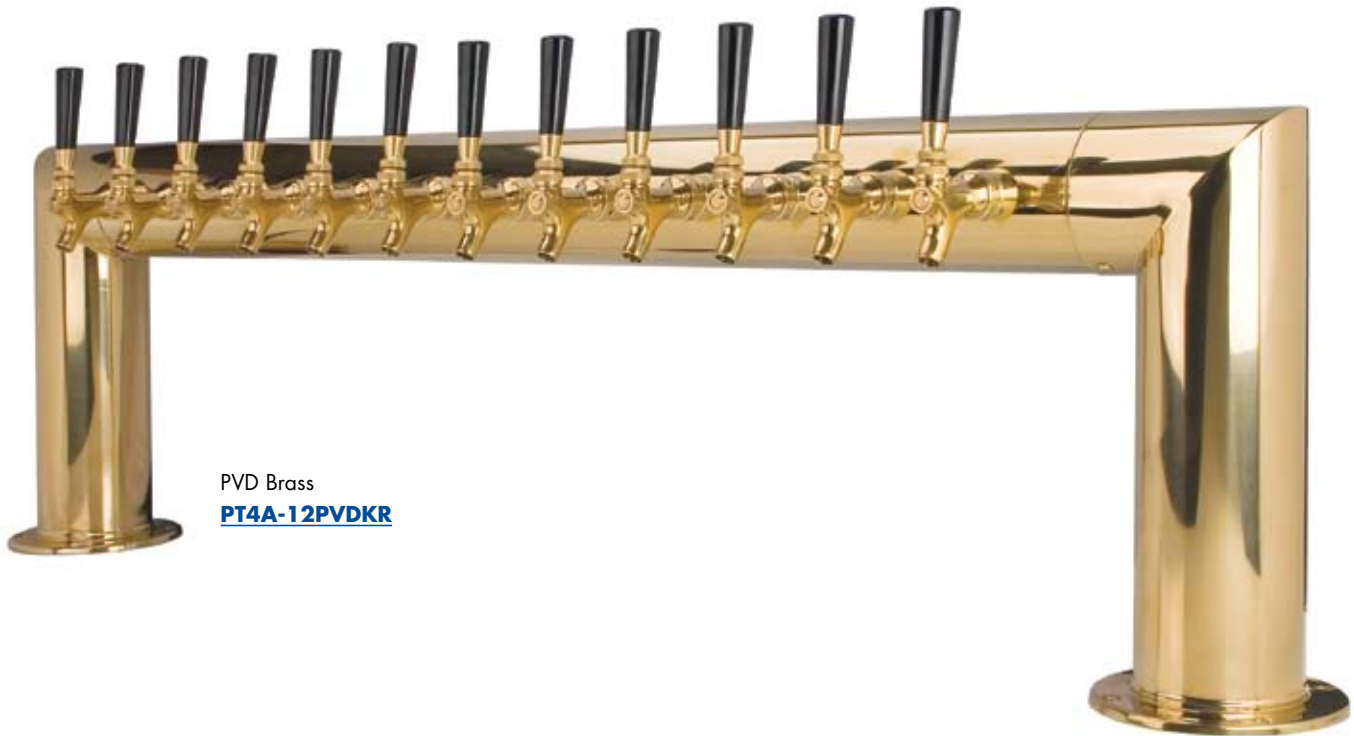



- Clean, bold tubular style is perfect for displaying draft beer variety.
- The draft tower is a marketing tool, not just a bar fixture.
- Exterior finish will provide years of durable service.
- All stainless steel contact with the beer for the ultimate in draft purity.



PVD Brass
PT4A-12PVDKR





Stainless Steel
PT4A-12PSSKR

 Faucet knobs not included.

Features

 PVD Brass
Tarnish Free.

 Stainless Steel
beer contact for the pure
taste of fresh draft beer.

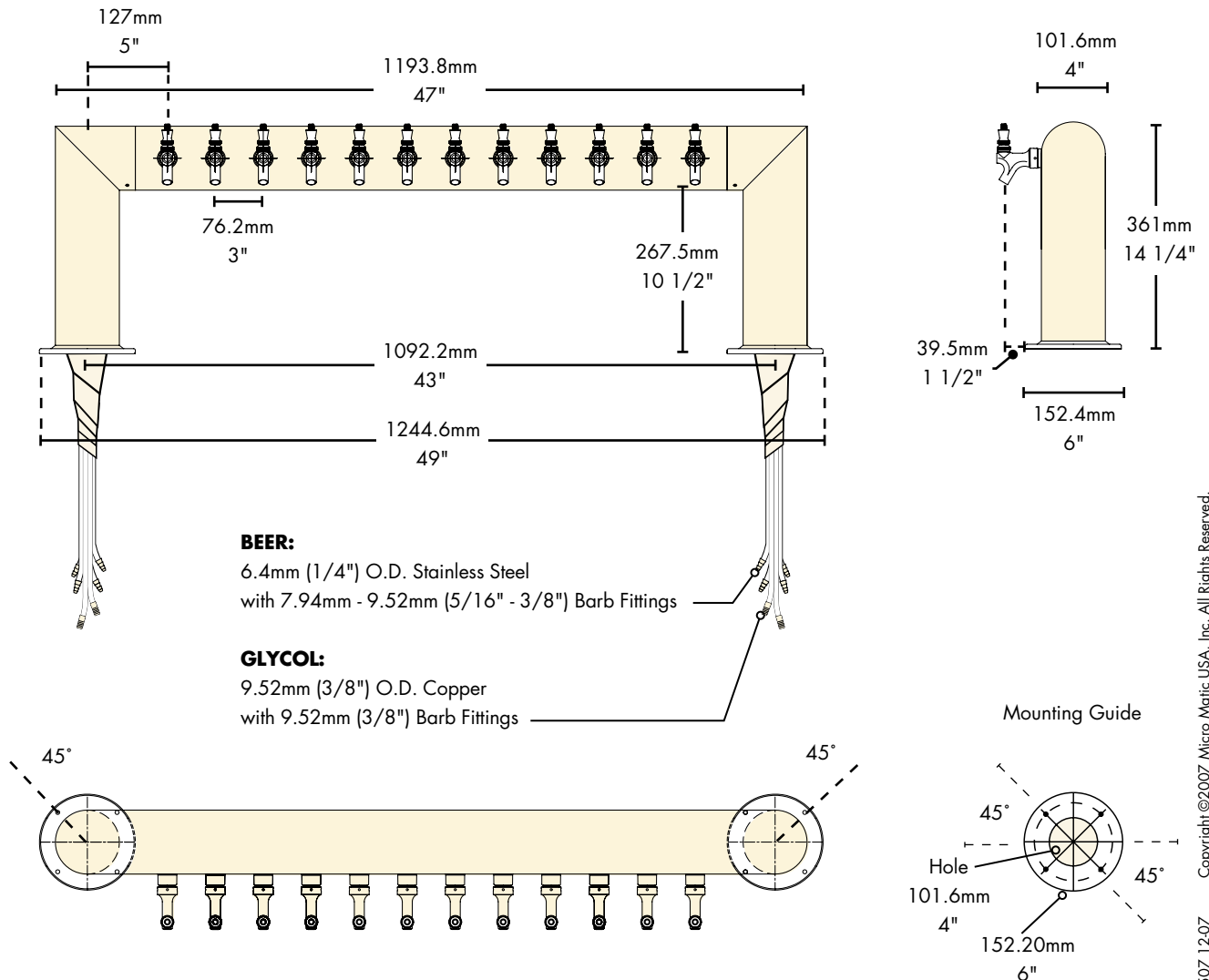
 The integrated Kool-Rite module provides
optimum cooling at the point of dispense. The
module construction makes the installation
process as simple as PLUG "N" POUR.

Specifications

Micro Matic reserves the right to change specifications without notice.

Part No.	Faucets	Finish	Dispense System	Shipping Weight	Box Dimensions
<input type="checkbox"/> PT4A-12PSSKR	12	Polished S/S	Kool-Rite (Glycol)	22 kg 48 lbs	1143mm L x 914mm W x 406mm H 45"L x 36"W x 16"H
<input type="checkbox"/> PT4A-12PVDKR	12	PVD Brass	Kool-Rite (Glycol)	22 kg 48 lbs	1143mm L x 914mm W x 406mm H 45"L x 36"W x 16"H

Dimensions



Copyright ©2007 Micro Matic USA, Inc. All Rights Reserved. 00215D0507 12.07



www.micromatic.com

Toll Free: 1-(866) 327-4159

West	Central	Southeast	Northeast
------	---------	-----------	-----------

19791 Bahama Street Northridge, CA 91324 Tel. (818) 701-9765 Fax. (818) 701-9844	10726 North Second Street Machesney Park, IL 61115 Tel. (815) 968-7557 Fax. (815) 968-0363	16121 Flight Path Drive Brooksville, FL 34604 Tel. (352) 799-6331 Fax. (352) 796-2429	4601 Saucon Creek Road Center Valley, PA 18034 Tel. (610) 625-4464 Fax. (610) 625-4466
---	---	--	---