

RACCORDI MACON

- Ricavati da particolari stampati a caldo o laminati e solubilizzati.
- Accurata lavorazione delle parti filettate per eliminare l'ingrippaggio durante gli accoppiamenti.
- Eliminazione delle parti terminali delle filettature con operazioni meccaniche per evitare infortuni durante la manipolazione dei pezzi.
- Finitura standard: lucidatura esterna e satinatura interna grana 120.
- Per gli altri articoli a norme Macon valgono le informazioni tecniche fornite nei relativi capitoli.

MACON UNIONS

- Made from hot-rolled or press-forged material and solution heat-treated.
- Precise machining of the threaded parts to eliminate seizure during coupling.
- Elimination of end parts of threading with mechanical operations to prevent accidents during handling of the pieces.
- Standard finish: 120 grain external polishing and internal glazing.
- For the other Macon standards articles the technical details supplied in the respective chapters apply.

RACCORDS MACON

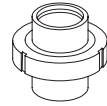
- Obtenus à partir de pièces moulées à chaud ou laminées et solubilisées.
- Usinage soigné des parties filetées pour éliminer le grippage pendant les assemblages.
- Elimination des parties finales des filetages à l'aide d'opérations mécaniques, pour éviter les accidents pendant le maniement des pièces.
- Finissage standard: polissage extérieur et satinage intérieur grain 120.
- Pour les autres articles conformes aux normes Macon, voir les informations techniques fournies dans les chapitres correspondants.

RACORES MACON

- Obtenidos a partir de piezas estampadas en caliente o laminadas y solubilizadas.
- Cuidadosa elaboración de las piezas roscadas para eliminar el agarrotamiento durante los acoplamientos.
- Eliminación de las partes terminales de las roscas con operaciones mecánicas para evitar accidentes durante la manipulación de las piezas.
- Acabado estándar: pulido exterior y satinado interior grano 120.
- Para los otros artículos fabricados según las normas Macon son válidos los datos técnicos proporcionados en los capítulos correspondientes.



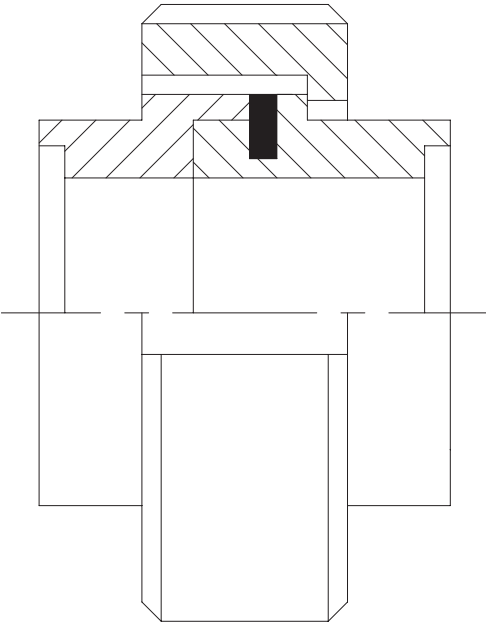
RACCORDI
UNIONS
RACCORDS
RACORES

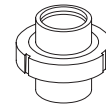


MACON

RACCORDO MACON
MACON UNION

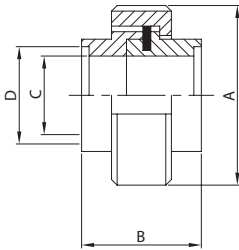
RACCORD MACON
RACOR MACON





**RACCORDO SR.
WG. UNION
RACCORD SR.
RACORD SR.**

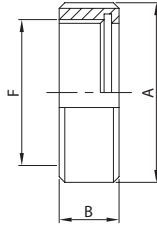
100 M



DN	A	B	C	D	gr
40	70,0	37,0	40,0	43,3	420
50	80,0	37,0	50,0	53,3	520
60	99,0	37,0	60,0	63,6	720
70	105,0	37,0	70,0	73,3	910
80	116,0	37,0	80,0	83,3	1.050
100	140,0	37,0	100,0	104,0	1.260

**GIRELLA
ROUND NUT
ÉCROU
TUERCA**

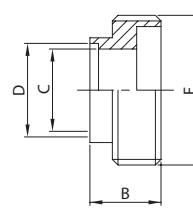
121 M



DN	A	B	F	gr
40	70,0	24,0	55x3	250
50	80,0	24,0	67x3	280
60	99,0	24,0	79x3,5	420
70	105,0	24,0	90x3,5	550
80	116,0	24,0	102x4	600
100	140,0	24,0	125x4	620

**BOCC. FILETTATO SR.
WG. MALE PART
NEZ FILETÉE SR.
MACHO SR.**

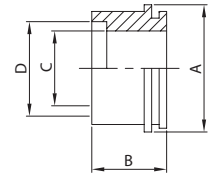
102 M



DN	B	C	D	F	gr
40	22,0	40,0	43,3	55x3	130
50	22,0	50,0	53,3	67x3	160
60	22,0	60,0	63,6	79x3,5	200
70	22,0	70,0	73,3	90x3,5	240
80	22,0	80,0	83,3	102x4	300
100	22,0	100,0	104,0	125x4	460

**BOCC. LISCIO SR.
WG. LINER
DOUILLE SR.
CASQUILLO SR.**

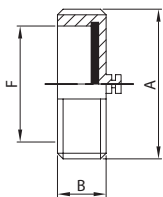
112 M



DN	A	B	C	D	gr
40	50,5	19,0	40,0	43,3	40
50	62,5	19,0	50,0	53,3	80
60	73,5	19,0	60,0	63,6	100
70	85,0	19,0	70,0	73,3	120
80	96,0	19,0	80,0	83,3	150
100	118,0	19,0	100,0	104,0	180

**GIRELLA CIECA
BLANK NUT
BOUCHON PLAT
TUERCA CIEGA**

124 M



DN	A	B	F	gr
40	70,0	24,0	55x3	330
50	80,0	24,0	67x3	370
60	99,0	24,0	79x3,5	500
70	105,0	24,0	90x3,5	580
80	116,0	24,0	102x4	700
100	140,0	24,0	125x4	800

**GUARNIZIONE PER RACC.
SEAL RING FOR UNION
JOINT DE RACCORD
JUNTA RACORD**

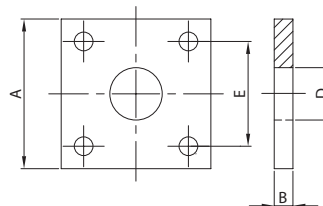
131 M



DN	A	B	C
40	50,0	3,0	13,5
50	62,0	3,0	53,5
60	73,0	3,0	63,5
70	80,0	3,0	73,5
80	95,0	4,0	83,5
100	117,0	4,0	103,5

**FLANGIA QUADRATA
SQUARE FLANGE
BRIDE CARRÉ VINICOLE
BRIDA CUADRADA**

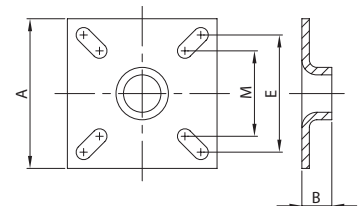
FP



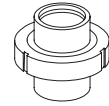
DN	A	B	D	E	gr
40	100,0	8,0	48,0	75,0	520
50	100,0	8,0	58,0	75,0	500
60	120,0	10,0	70,0	82,0	700
70	120,0	10,0	80,0	90,0	620
80	140,0	10,0	90,0	102,0	800
100	140,0	10,0	110,0	102,0	780

**FL. QUADR. FORI OVALI
SQUARE FL. OVAL HOLES
BR. C. TROUS OVALISÉS
BR. C. TALADR. OVALADOS**

FL



DN	A	B	E	M	gr
40	100,0	15,0	75,0	60,0	300
50	100,0	15,0	75,0	60,0	290



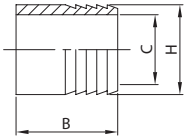
ATT. PORTAGOMMA EL.
HOSE CONNECTION PE.
MANCHON À LIGATURER
MANGUITO MANGUERA EL.

ATT. PORTAGOMMA BF. ST.
HOSE CONNECT. MP. WD.
NEZ FILETÉ À LIGATURER
M. M. MACHO SD.

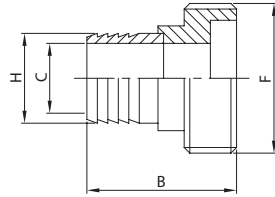
ATT. PORTAGOMMA BC. ST.
HOSE CONNECT. TP. WD.
DOUILLE À LIGATURER
M. M. MACHO SD.

BOCC. FILETTATO DOPPIO
DOUBLE MALE PART
NEZ FILETÉ DOUBLE
MACHO RACORD DOBLE

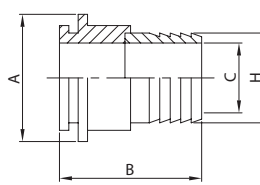
140 M



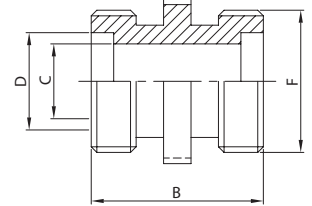
141 M



142 M



125 M



DN	B	C	H	gr
40	57,0	40,0	43,0	80
50	62,0	50,0	53,0	100
60	72,0	60,0	63,5	120
70	77,0	70,0	73,0	180
80	90,0	80,0	83,0	240

DN	B	C	F	H	gr
40	74,0	40,0	55x3	43,0	210
50	79,0	50,0	67x3	53,0	260
60	89,0	60,0	79x3,5	63,5	320
70	94,0	70,0	90x3,5	73,0	420
80	107,0	80,0	102x4	83,0	540

DN	A	B	C	H	gr
40	50,5	71,0	40,0	43,0	120
50	62,5	76,0	50,0	53,0	180
60	73,5	86,0	60,0	63,5	220
70	85,0	91,0	70,0	73,0	300
80	96,0	104,0	80,0	83,0	390

DN	B	C	D	F	gr
40	54,0	40,0	45,0	55x3	300
50	54,0	50,0	55,0	67x3	400
60	54,0	60,0	66,0	79x3,5	500
70	54,0	70,0	76,0	90x3,5	600
80	54,0	80,0	86,0	102x4	720

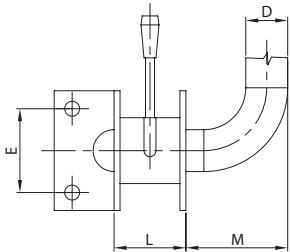
DECANTATORE CURVA 90°
DECANTER 90° BEND
COUDE DÉCANTEUR 90°
DECANTADOR CODO 90°

DEC. V. FARFALLA
DEC. BUTTERFLY VALVE
COUDE DEC. V. PAPILLON
DEC. V. MARIPOSA

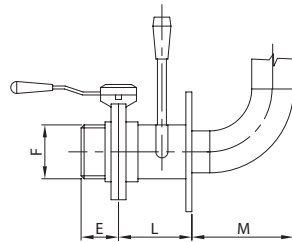
DEC. SERBATOIO CEMENTO
DEC. CEMENT TANK
COUDE DEC. C. CIMENT
DEC. TANQUE CEMENTO

DEC. S. CEM. V. FARFALLA
DEC. CEM. T. BUTTERFLY V.
C. DEC. C. CIM. V. PAPILLON
DEC. T. CEMENTO V. MAR.

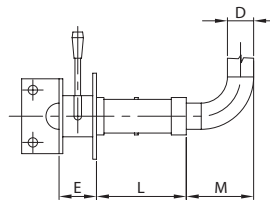
551 V



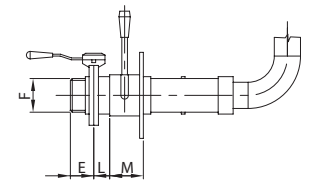
552 V



556 V



557 V

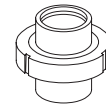


DN	D	E	L	M	gr
40	43,3	75,0	56,0	205,0	2.580
50	53,3	75,0	56,0	240,0	2.580

DN	E	F	L	M	gr
40	37,0	55x3	67,0	205,0	3.720
50	37,0	67x3	67,0	240,0	4.210

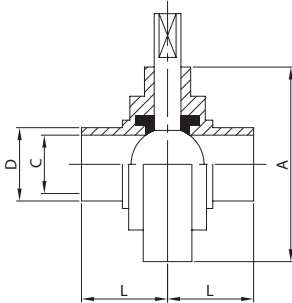
DN	D	E	L	M	gr
40	43,0	65,0	200,0	177,0	3.800
50	53,0	65,0	200,0	212,0	4.820

DN	E	F	L	M	gr
40	37,0	55x3	31,0	67,0	4.980
50	37,0	67x3	31,0	67,0	6.450



V. FARFALLA EL./EL.
 BUTTERFLY V. PE./PE.
 V. PAPILLON BL./BL.
 V. MARIPOSA EL./EL.

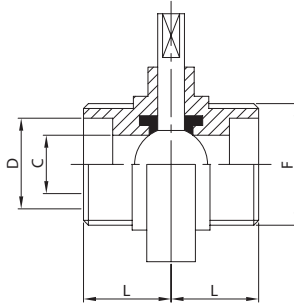
711 V



DN	A	C	D	L	gr
40	92,0	40,0	48,0	37,0	990
50	105,0	50,0	58,0	37,0	1.270
60	112,0	60,0	70,0	40,0	1.460
70	125,0	70,0	80,0	40,0	1.750
80	137,0	80,0	90,0	40,0	2.300
100	157,0	100,0	110,0	45,0	2.840

V. FARFALLA EF./EF.
 BUTTERFLY V. ME./ME.
 V. PAPILLON BF./BF.
 V. MARIPOSA ER./ER.

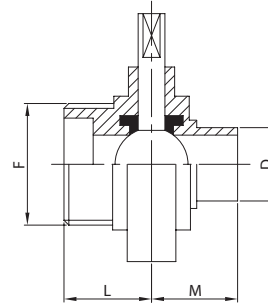
722 M



DN	C	D	F	L	gr
40	40,0	45,0	55x3	37,0	1.160
50	50,0	55,0	67x3	37,0	1.600
60	60,0	66,0	79x3,5	40,0	1.800
70	70,0	76,0	90x3,5	40,0	2.200
80	80,0	86,0	102x4	40,0	2.800
100	100,0	106,0	125x4	45,0	3.440

V. FARFALLA EL./EF.
 BUTTERFLY V. PE./ME.
 V. PAPILLON BL./BF.
 V. MARIPOSA EL./ER.

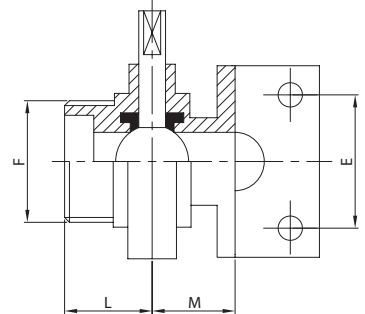
712 M



DN	D	F	L	M	gr
40	48,0	55x3	37,0	37,0	1.075
50	58,0	67x3	37,0	37,0	1.430
60	70,0	79x3,5	40,0	40,0	1.630
70	80,0	90x3,5	40,0	40,0	1.980
80	90,0	102x4	40,0	40,0	2.550
100	110,0	125x4	45,0	45,0	3.140

V. FARFALLA EF./FL.
 BUTTERFLY V. ME./FL.
 V. PAPILLON BF./BR.
 V. MARIPOSA ER./BR.

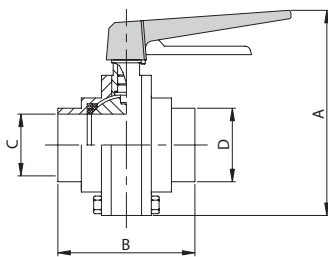
725 M



DN	E	F	L	M	gr
40	75,0	55x3	37,0	40,0	1.600
50	75,0	67x3	37,0	40,0	1.930
60	82,0	79x3,5	40,0	45,0	2.330
70	90,0	90x3,5	40,0	45,0	2.600
80	102,0	102x4	40,0	45,0	3.350
100	102,0	125x4	45,0	50,0	3.920

V. SFERA COMPATTA EL.
 COMPACT BALL VALVE PE.
 V. BOULE COMPACTE BL.
 V. BOLA COMPACTA EL.

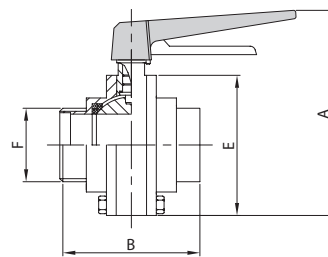
W71



DN	A	B	C	D	gr
40	143,0	73,0	40,0	48,0	1.600
50	157,0	80,0	50,0	58,0	2.600
60	178,0	97,0	60,0	70,0	4.000
70	189,0	112,0	70,0	80,0	5.000

V. SFERA COMPATTA EL./EF.
 C. BALL VALVE PE./ME.
 V. BOULE COMPACTE BL./BF.
 V. BOLA COMPACTA EL./EF.

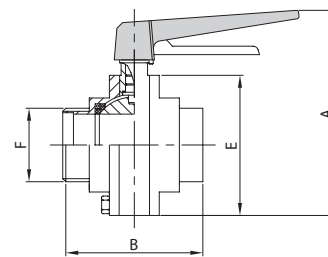
WM71



DN	A	B	E	F	gr
40	143,0	82,0	84,0	55-3	1.900
50	157,0	85,0	98,0	67-3	2.400
60	178,0	111,0	119,0	79-3,5	4.600
70	189,0	118,0	133,0	90-3,5	5.600

VALVOLA SFERA EL./EF.
 BALL VALVE PE./ME.
 VANNE BOULE BL./BF.
 VÁLVULA BOLA EL./ER.

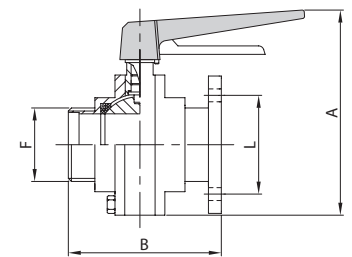
WM81



DN	A	B	E	F	gr
40	143,0	82,0	84,0	55-3	1.900
50	157,0	85,0	98,0	67-3	2.400
60	178,0	111,0	119,0	79-3,5	4.600
70	189,0	118,0	133,0	90-3,5	5.600

VALVOLA SFERA EF./FL.
 BALL VALVE ME./FL.
 VANNE BOULE BF./BR.
 VÁLVULA BOLA ER./BR.

MF81



DN	A	B	F	L	gr
40	143,0	82,0	55-3	75,0	2.400
50	157,0	85,0	67-3	75,0	3.400
60	178,0	111,0	79-3,5	82,0	5.300
70	189,0	118,0	90-3,5	90,0	6.200

Foto:
LUCA VENTURA
Milano

Composizione:
COMPOSTUDIO
Cernusco S/N (MI)

Fotolito:
COMPOSTUDIO
Cernusco S/N (MI)

Stampa:
ARTI GRAFICHE M. & G. PIROVANO
Novegro di Segrate (MI)

Finito di stampare nel mese di aprile 2005