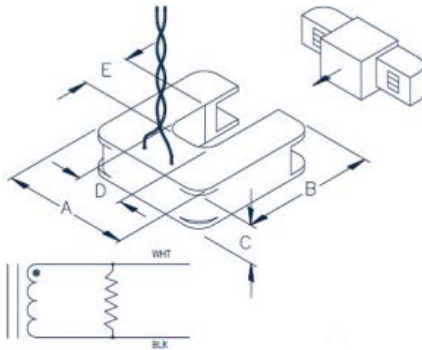


Split-Core Standard CT Current Transformer

Setra's Split-Core Standard current transformers provide a high accuracy current measurement over a wide dynamic sensing range for power metering applications. Unlike the competition, Setra offers "Safe CT's", which provide a millivolt output directly proportional to the input current. These current transformers are safely and easily installed on existing power lines without disconnecting the lines and interrupting service. The CT's are available from 100A to 600 A and when used with Setra's Power Patrol (SPP) or Power Squad (SPS24) provide a complete metering solution for demanding applications



DIMENSIONS



A	B	C	D	E
8.26 cm (3.25")	8.51 cm (3.35")	2.54 cm (1.00")	3.18 cm (1.25")	3.18 cm (1.25")

ORDERING INFORMATION

CT - SCM - [] [] []

Model		Amps	
SCM	Split-Core Medium	100	100 Amps
		200	200 Amps
		400	400 Amps
		600	600 Amps

GENERAL SPECIFICATIONS

Nominal Rating	100A	200A	400A	600A
Aperture Size	1.25" (3.20 cm)			
Current Range	5-130A AC	4-260A AC	8-520A AC	12-780A AC
Output	333 mV @ rated current			
Ratio Error	<1% at rated current (typical)			
Phase Error	<2° at rated current (typical)			
Electrical				
Wire Polarity	White = Hi, positive (+) Black = Low, negative (-)			
Frequency Range	50 to 400 Hz			
Mechanical				
Case Material	Epoxy Encapsulated Housing			
Leads	2.7 M (8'), twisted pair, 20 AWG			
Operating Temp.	Maximum 105°C (220°F)			
Safety				
Working Voltage	600 VAC, Category III			
Dielectric Strength	5000 VAC around case, 600V rated leads			
Certifications	UL STD 61010-1, EN 60044-1:1999 Certified to: CAN/CSA STD 22.2 NO. 61010-1			