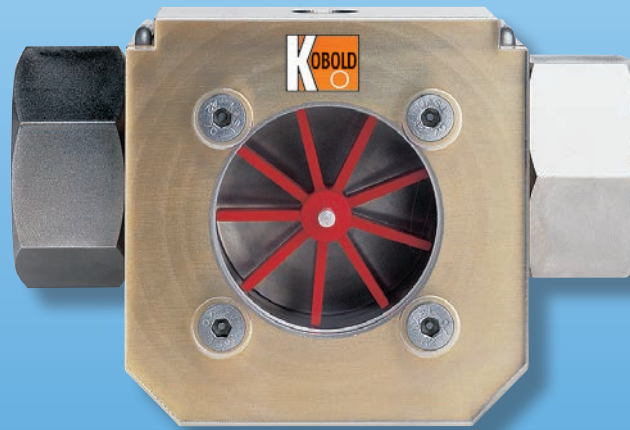


## Rotating Vane Flow Indicator for Liquids



measuring  
•  
monitoring  
•  
analyzing

DIH



- Range: 0.05...0.13 GPM through  
0.26...13.2 GPM Water
- Connection: 3/8" or 1" NPT
- Housing: Nickel-Plated Brass, Stainless  
Steel, or POM
- $P_{max}$ : 230 PSI
- $T_{max}$ : 176 °F
- $\Delta P$  at Max. Flow: 14.5 PSI



KOBOLD companies worldwide:

ARGENTINA, AUSTRIA, BELGIUM, BULGARIA, CANADA, CHILE, CHINA, COLUMBIA, CZECH REPUBLIC, EGYPT,  
FRANCE, GERMANY, GREAT BRITAIN, HUNGARY, INDIA, INDONESIA, ITALY, MALAYSIA, MEXICO, NETHER-  
LANDS, PERU, POLAND, ROMANIA, SINGAPORE, SOUTH KOREA, SPAIN, SWITZERLAND, TAIWAN, THAILAND,  
TUNISIA, TURKEY, USA, VIETNAM

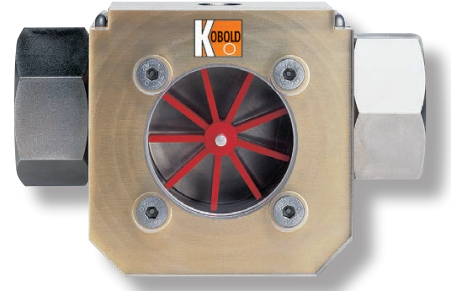
KOBOLD Instruments, Inc.  
1801 Parkway View Drive  
Pittsburgh, PA 15205  
☎ Main Office:  
1.412.788.2830  
☎ 1.412.788.4890  
info@koboldusa.com  
www.koboldusa.com



## Rotating Vane Flow Indicator Model DIH

### Key Features

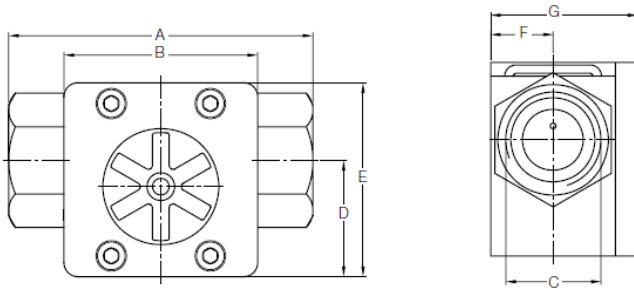
- Range: 0.05...0.13 GPM - 0.26...13.2 GPM Water
- Connection: 3/8" or 1" NPT
- Housing: Nickel-Plated Brass, Stainless Steel, or POM
- $P_{max}$ : 230 PSI
- $T_{max}$ : 176 °F
- $\Delta P$  at Max. Flow: 14.5 PSI



### Material Combination

	DIH-11...	DIH-12...	DIH-13...
Housing	Nickel plated brass	SS (1.4404)	POM
Cover	PMMA (Plexi)	PMMA (Plexi)	PMMA (Plexi)
Seal	NBR	FKM	NBR
Rotor	Polypropylene	Polypropylene	Polypropylene
Axle	Ceramic	Ceramic	Ceramic
$P_{max}$	230 PSI	230 PSI	230 PSI
$T_{max}$	176 °F	176 °F	176 °F

### Dimensions



Dimensions	3/8" NPT Conn. Models	1" NPT Conn. Models
A	84 mm	110 mm
B	60 mm	70 mm
C	3/8" NPT	1" NPT
D	40 mm	42 mm
E	60 mm	70 mm
F	19.5 mm	22.5 mm
G	41.5 mm	53 mm

### Order Details (Example: DIH-1108G N25)

Range GPM Water	Model Number			Connection
0.05 - 0.13	DIH-1101G..	DIH-1201G..	DIH-1301G..	..N10 = 3/8" NPT
0.08 - 0.52	DIH-1102G..	DIH-1202G..	DIH-1302G..	
0.13 - 1.3	DIH-1103G..	DIH-1203G..	DIH-1303G..	
0.26 - 3.2	DIH-1104G..	DIH-1204G..	DIH-1304G..	
0.26 - 4.8	DIH-1105G..	DIH-1205G..	DIH-1305G..	
0.26 - 5.8	DIH-1106G..	DIH-1206G..	DIH-1306G..	..N25 = 1" NPT
0.26 - 9.2	DIH-1107G..	DIH-1207G..	DIH-1307G..	
0.26 - 13.2	DIH-1108G..	DIH-1208G..	DIH-1308G..	