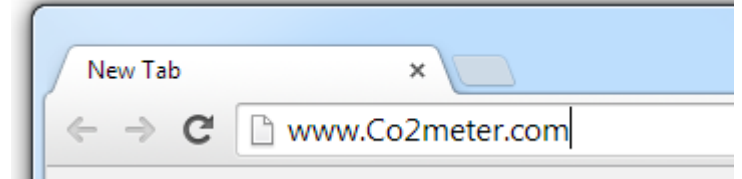
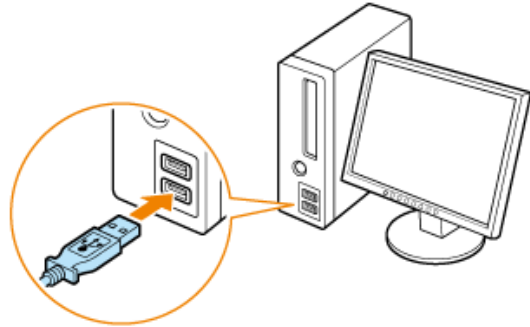


Quick Start Guide for CO2Meter Development Kits

1) Download and install GasLab From the website at :
<http://www.co2meter.com/pages/downloads>

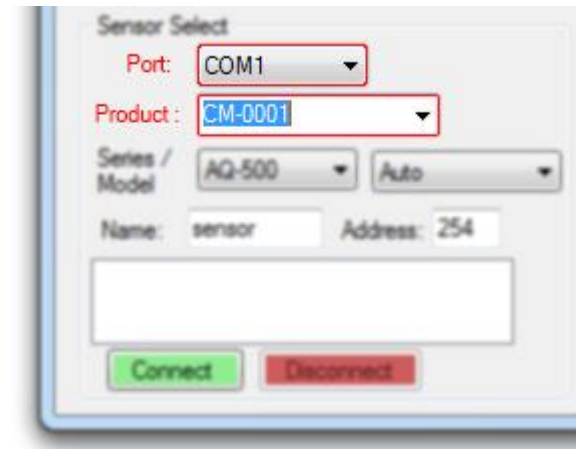


2) After you have Installed the software, connect the sensor or meter to the computer with the included USB cable.

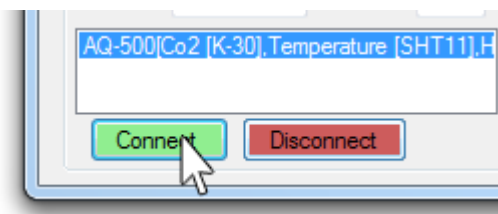


3) Open the GasLab software and in the bottom left corner, select the port. Then Enter the product number of the device in the 'Product' field.

(If you are not sure which port is correct, unplug the sensor and see which option disappears. plug the sensor back in and select that port.)



4) Click Connect



5) Begin Making readings or using the Auto-logger function

