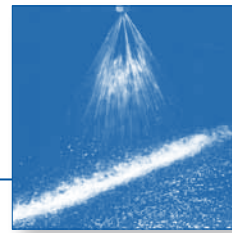




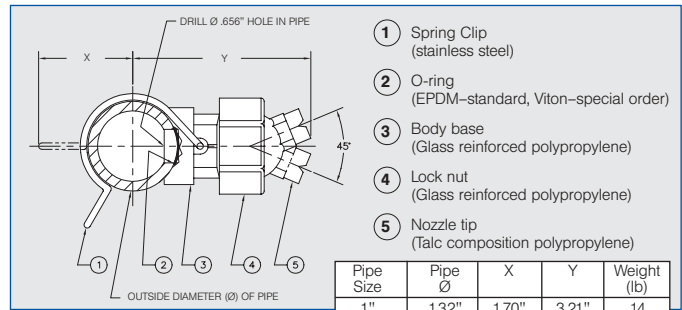
Flat fan nozzles Easy Clip ball joint nozzle assembly Series 676



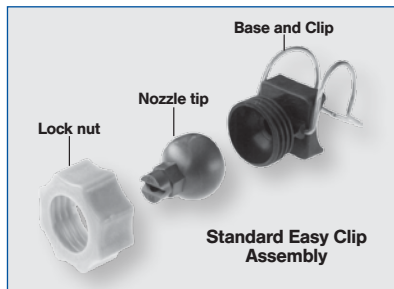
Excellent for quick and easy header construction. These spring mounting bases allow flexible nozzle alignment and a wide range of angles and flow rates. Drill .656" hole in the pipe for mounting. Assembly clamps to pipe. Nozzle ball tip adjusts as needed. No welding or threading. Maximum pressure 60 psi.

Applications:

- Parts washing and degreasing
- Phosphating lines
- Pre-painting processing



Pipe Size	Pipe Ø	X	Y	Weight (lb)
1"	1.32"	1.70"	3.21"	.14
1 1/4"	1.66"	1.89"	3.41"	.15
1 1/2"	1.90"	2.02"	3.50"	.15
2"	2.38"	2.25"	3.74"	.17



Easy Clip complete nozzle assembly

Spray angle	Ordering no.						Flow Rate (Gallons Per Minute)					Color	Item 5 (see top chart) Replacement Nozzle Tip Ordering no.
	Type	Mat. no.	To Mount on Pipe size				10 psi	20 psi	40 psi	60 psi	80 psi		
			PP 53	1"	1 1/4"	1 1/2"							
60°	676. 724	○	30	31	32	33	.98	1.4	2	2.4	2.8	Gray	676. 724. 53. 30. 01
	676. 764	○	30	31	32	33	1.2	1.8	2.5	3	3.5	Brown	676. 764. 53. 30. 01
	676. 804	○	30	31	32	33	1.6	2.2	3.1	3.8	4.4	Purple	676. 804. 53. 30. 01
	676. 844	○	30	31	32	33	1.9	2.7	3.9	4.8	5.5	Yellow	676. 844. 53. 30. 01
	676. 884	○	30	31	32	33	2.5	3.5	5	6.1	7	Red	676. 884. 53. 30. 01
	676. 904	○	30	31	32	33	2.8	4.0	5.7	6.9	8.0	Blue	676. 904. 53. 30. 01
676. 924	○	30	31	32	33	3.1	4.4	6.2	7.6	8.8	Green	676. 924. 53. 30. 01	

Replacement parts

Item no. (see top chart)	Type	Ordering no.	For Pipe Size
1 and 3	Base and Clip	092. 080. 53. 00. 00	1"
		092. 081. 53. 00. 00	1 1/4"
		092. 082. 53. 00. 00	1 1/2"
		092. 083. 53. 00. 00	2"
4	Lock nut	092. 080. 53. 00. 02	
2	O-ring	092. 015. 6C. 04. 32	

Example Type + Material no. + Pipe Size = Ordering no.
for ordering: 676. 884 + 53 + 32 = 676. 884. 53. 32 (Nozzle assembly to mount on 1 1/2" pipe)

A listing of alternatives for various assembly possibilities is shown in the Accessories section beginning on page 125.

Conversion formula for the above series: $V_2 = V_1 \sqrt{\frac{P_2}{P_1}}$
(See page 12 for symbol definitions.)

