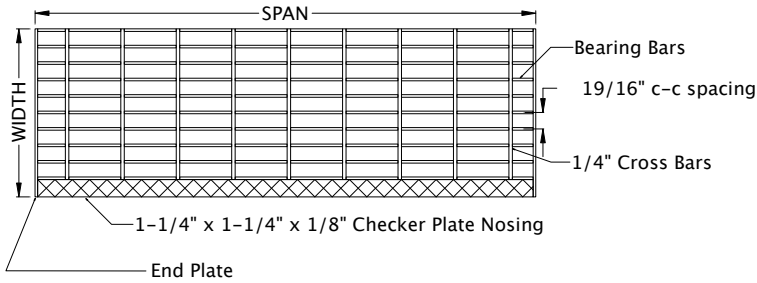


Available Widths	
6-3/16"	9-3/4"
7-3/8"	10-15/16"
8-9/16"	12-1/8"

Available Alloys
Steel
Galvanized Steel
Stainless Steel



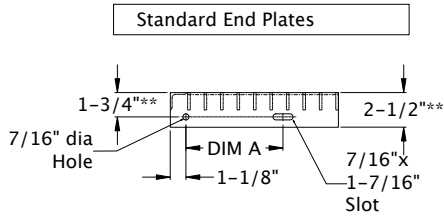
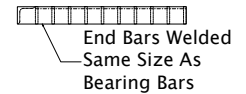
Bearing Bar Options	
1" x 3/16"	Max. Span 36"
1-1/4" x 3/16"	Max. Span 48"
1-1/2" x 3/16"	Max. Span 63"

Welded Construction

End Plate Options

Width	DIM A
6-3/16"	2-1/2"
7-3/8"	4-1/2"
8-9/16"	4-1/2"
9-3/4"	7"
10-15/16"	7"
12-1/8"	7"

Trim Banded



\*\*3" End Plates for 1-1/2" or Greater Bearing Bars with 2-1/4" hole location

SlipNOT GRATING TREAD - 19W4

Copyright 2004, The WS Molnar Company  
All Rights Reserved

**SlipNOT**  
Metal Safety Flooring  
2545 Beaufait Street  
Detroit, Michigan 48207  
800/754-7668 Phone  
313/923-4555 Fax  
info@slipnot.com (Email)