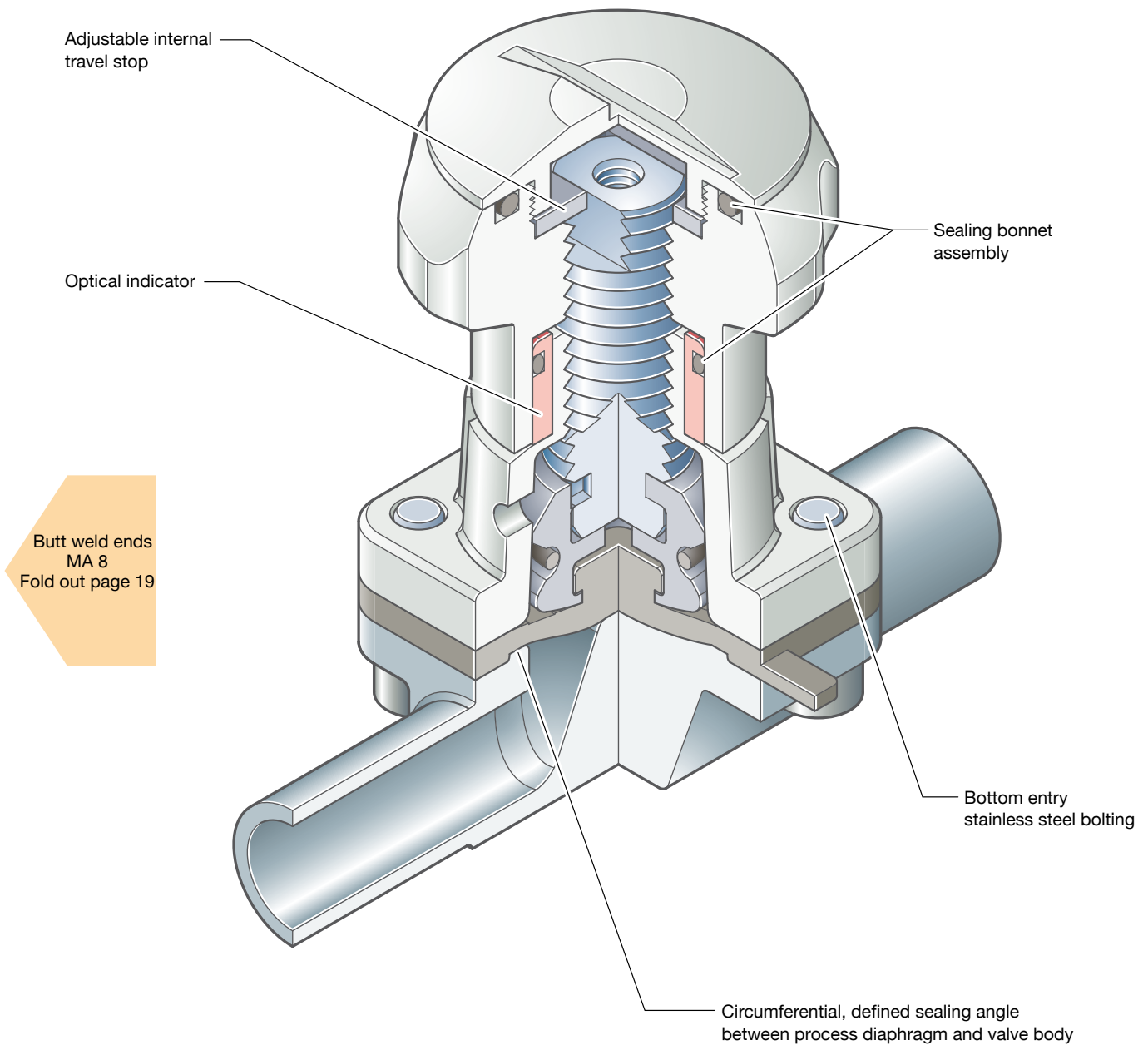


Steripur 297

Manual Valve DN 4 - 15 mm (1/4" - 1/2")



Sectional drawing shows Steripur 297

Steripur 297 / KMA 290

Manual Valve DN 4 - 15 mm (1/4" - 1/2")



Steripur 297



KMA 290

Butt weld ends
MA 8
Fold out page 19

Specific Features

Type 297 Steripur

- **Stainless steel bonnet and hand wheel**
- Autoclavable

Type 290 KMA

- **Stainless steel bonnet and plastic hand wheel**
- Manual diaphragm Valve with plastic hand wheel is suitable for a limited number of cycles.

General Features

- Rising hand wheel
- Sealed bonnet with optical indicator
- Adjustable internal travel stop
- CDSA sealing concept, see page 30
- Flexible diaphragm suspension

Optional

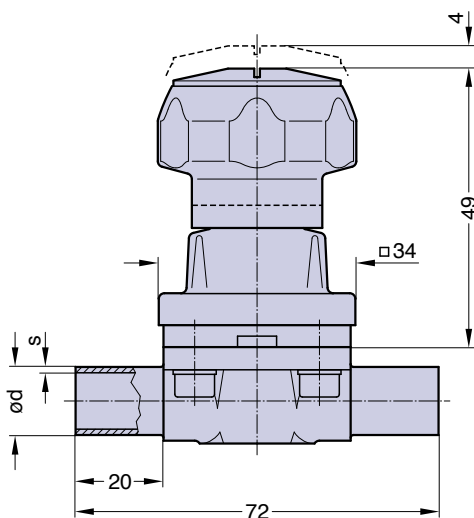
Type 297 Steripur

- Locking device

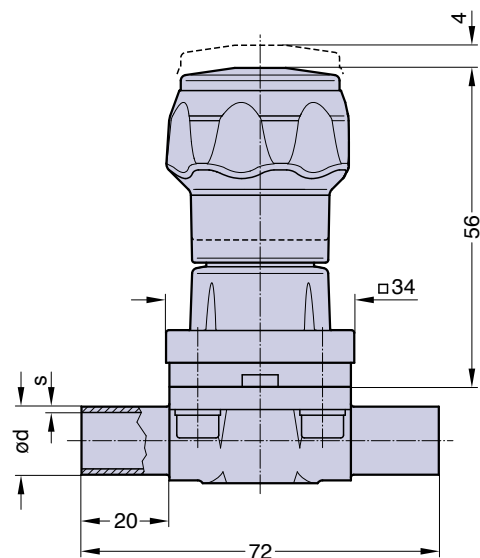
Technical Data

Control function:	Manually operated
Max. working pressure:	10 bar (150 psi)
Max. working temperature:	160°C (320°F) dependent on application
Diaphragm material:	EPDM or PTFE
Body material:	Forged 1.4435/ 316L ASME/BPE Investment cast 1.4435/ 316L Other Alloys
End connection:	Butt weld ends see fold out page 19 Clamps and flanges see page 20 and 21 Special ends
Bonnets suitable for:	Two-Way bodies Welded configurations T- bodies Multiport bodies Tank bottom bodies
Flow rate:	Kv in m ³ /h (Cv in GPM) see page 9
Diaphragm size:	MA 8
Weight:	290: ca. 0,2 kg 297: ca. 0,3 kg

Technical data also valid for multiport valve.



Steripur 297



KMA 290

Ordering key see page 56.