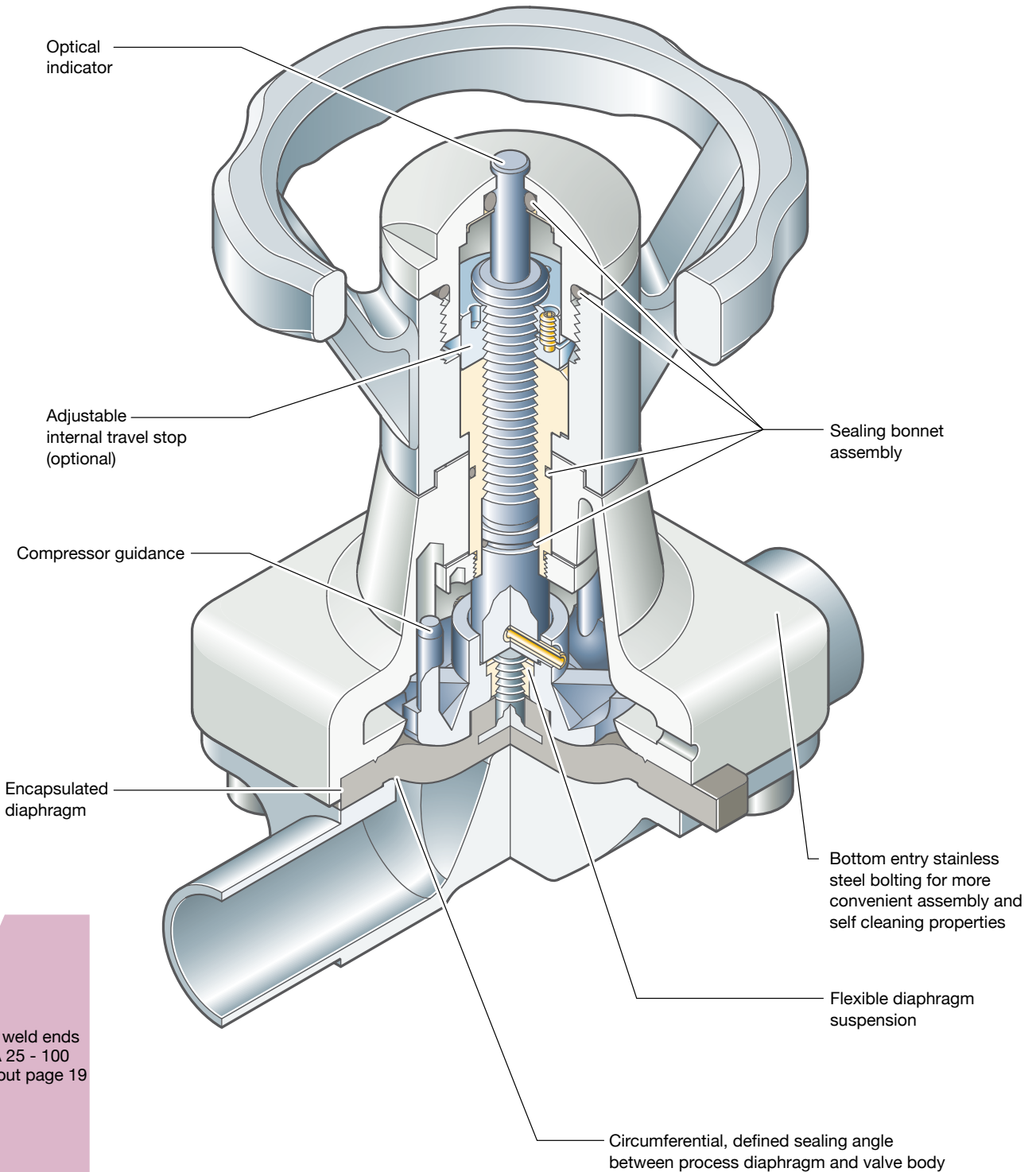


# Steripur 997

## Manual Valve DN 15 - 100 mm (3/4" - 4")



Butt weld ends  
MA 25 - 100  
Fold out page 19

# Steripur 997

## Manual Valve DN 15 - 100 mm (3/4" - 4")



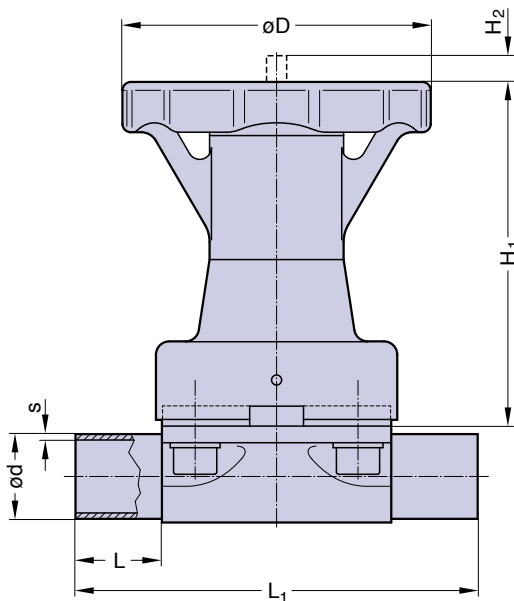
### Features

- Stainless steel bonnet and hand wheel
- Non rising hand wheel with optical indicator
- Sealed bonnet
- Autoclavable
- CDSA sealing concept, see page 30
- Flexible diaphragm suspension
- Encapsulated diaphragm

### Optional

- Adjustable internal travel stop or stroke limiter

DN 15 - 50



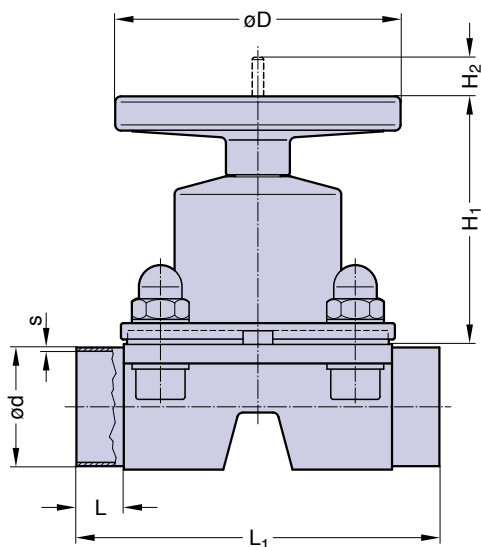
DN 15 - 50

### Technical Data

- Control function: Manually operated  
 Max. working pressure: 10 bar (150 psi)  
 DN 65-100 diaphragm PTFE 8 bar (115 psi)  
 Max. working temperature: 160°C (320°F) dependent on application  
 Diaphragm material: EPDM or PTFE  
 Valve body material: Forged 1.4435/ 316L ASME/BPE  
 Investment cast 1.4435/ 316L  
 Other Alloys
- End connection: Butt weld ends see fold out page 19  
 Clamps and flanges see page 20 and 21  
 Special ends
- Bonnets suitable for: Two-Way bodies  
 Welded configurations  
 T- bodies  
 Multiport bodies  
 Tank bottom bodies
- Flow rate: Kv in m<sup>3</sup>/h (Cv in GPM) see page 9  
 Diaphragm size: MA see table  
 Technical data also valid for multiport valve.

DN (mm)	MA	Dimensions (mm)					Total weight ca. (kg)	
		L	L <sub>1</sub>	H <sub>1</sub>	H <sub>2</sub>	D	Investment cast	Forged
15-25	25	25	120	103	10	92	1,8	1,9
32-40	40	25	153	135	17	135	4,0	4,2
50	50	30	173	135	24	135	8,0	9,0
65	80	30	216	180	38	198	13,0	15,0
80	80	30	254	180	38	198	13,0	15,0
100	100	30	305	220	50	252	22,0	20,0

Butt weld ends  
 MA 25 - 100  
 Fold out page 19



DN 65 - 100 (Drawing MA 80)

Ordering key see page 56.