

KMA 995

Manual Valve DN 15 - 100 mm (3/4" - 4")



DN 15 - 50

Features

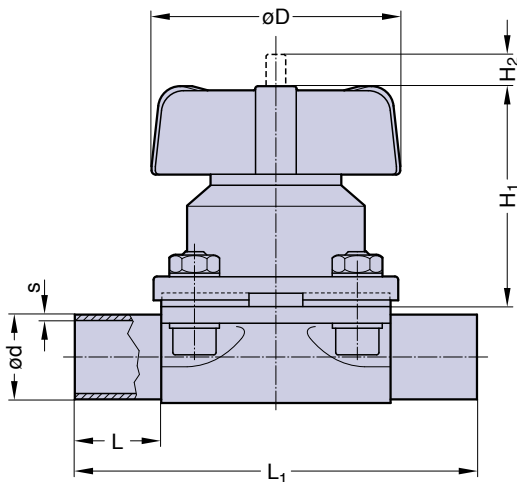
- Stainless steel bonnet and plastic hand wheel
- Non rising hand wheel with optical indicator
- Flexible diaphragm suspension
- Encapsulated diaphragm
- CDSA sealing concept, see page 30

Optional

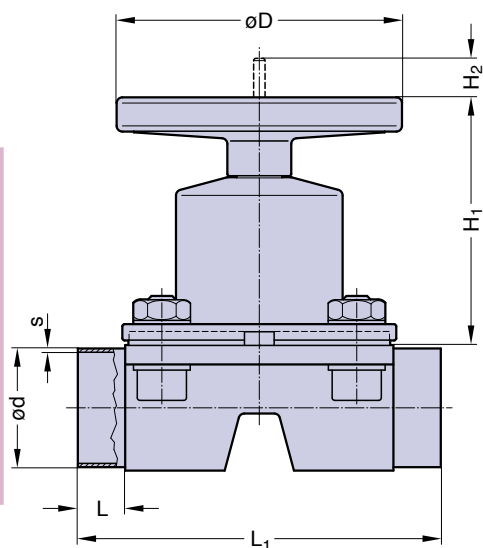
- Adjustable travel stop or stroke limiter
- Sealed bonnet
- Locking device

Technical Data

- Control function: Manually operated
 Max. working pressure: 10 bar (150 psi)
 DN 65-100 diaphragm PTFE 8 bar (115 psi)
 Max. working temperature: 160°C (320°F) dependent on application
 Diaphragm material: EPDM or PTFE
 Valve body material: Forged 1.4435/ 316L ASME/BPE
 Investment cast 1.4435/ 316L
 Other Alloys
 End connection: Butt weld ends see fold out page 19
 Clamps and flanges see page 20 and 21
 Special ends
 Bonnets suitable for: Two-Way bodies
 Welded configurations
 T- bodies
 Multiport bodies
 Tank bottom bodies
 Flow rate: Kv in m³/h (Cv in GPM) see page 9
 Diaphragm size: MA see table
 Technical data also valid for multiport valve.



DN 15 - 50



DN 65 - 100 (Drawing MA 80)

Butt weld ends
 MA 25 - 100
 Fold out page 19

DN (mm)	MA	Dimensions (mm)					Total weight ca. (kg)	
		L	L ₁	H ₁	H ₂	D	Investment cast	Forged
15-25	25	25	120	71	10	90	1,0	1,1
32-40	40	25	153	91	14	114	2,0	2,3
50	50	30	173	110	23	140	3,2	4,3
65	80	30	216	180	38	198	10,0	13,0
80	80	30	254	180	38	198	10,0	13,0
100	100	30	305	220	50	252	19,0	17,0

Ordering key see page 56.