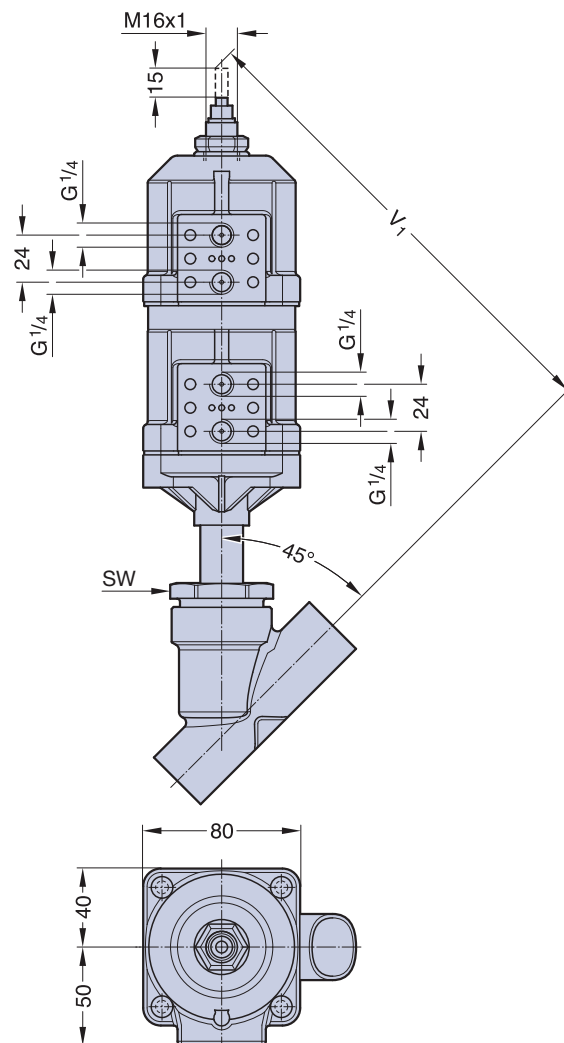


Type 590, Two Stage Actuator 70



Cap
024.17.001
optional



2/2-Way Angle Seat Valves with Two Stage Actuator

The pneumatically controlled two stage piston actuator is made of two plastic actuators. The two stages can be independently actuated from each other. In order to open the valve completely with the full flowrate, the lower piston has to be actuated. Limited opening or flowrate is possible by actuating the upper piston. An adjustable stroke limiter allows to adjust the linear movement of the upper position. An optical indicator which is directly connected with the valve spindle shows the stroke. The control function of the valve is normally closed (Cf.1).

Application

The valve is mainly used for filling with controlled filling of a tank, container or barrel. For filling, the valve is completely opened with the full flow rate. At the end of the filling cycle, the valve automatically reduces to the second stage of filling with a reduced flow rate for an accurate finish fill.

Type 590 Two Stage Valve DN 15-50

Measurement and weight table Actuator type 70

DN	SW	V ₁	Weight (kg)
15	36	232	1,9
20	41	238	2,1
25	46	243	2,2
32	55	249	2,9
40	60	255	3
50	75	263	4

Valve body types see page 96 - 97

Control equipment and accessories see page 100 - 106

Working pressure normally closed (Cf. 1), flow below the seat as well as working pressure, see table page 90. All pressures are gauge pressures.