



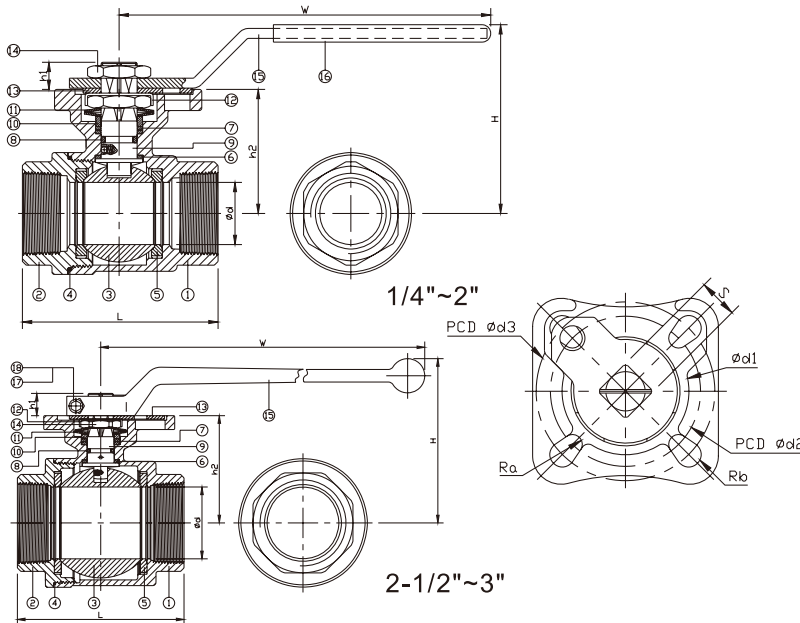
2-PC. SCREWED END BALL VALVE 2006SD

FEATURES



- Full port, 1/4"~3" (DN8~DN80)
- W.P. : 1000 WOG (PN63)
- W.T. : -20°C~200°C (-4°F~392°F)
- Investment casting
- Blow-out proof stem
- Live-loading design
- Anti-static device
- Locking device
- ISO 5211 Direct mounting pad
- **ISO 15848 fugitive emission approved (option)**
- **Automation accessories (option)**

- Thread type : ASME B1.20.1 (NPT)
DIN2999 & BS21
ISO7/1 & EN10226



ITEM	PARTS	MATERIAL
1	BODY	
2	CAP	ASTM A351-CF8M ASTM A216-WCB
3	BALL	ASTM A351-CF8M
4	SEAL	PTFE
5	SEAT	PTFE / RTFE
6	THRUST WASHER	
7	PACKING	PTFE
8	O-RING	VITON
9	STEM	ASTM A276-316
10	GLAND RING	AISI 304
11	BELLEVILLE WASHER	AISI 301
12	LOCKING WASHER	
13	STOPPER	AISI 304
14	STEM NUT	
15	HANDLE	STAINLESS STEEL
16	HANDLE SLEEVE	PVC
17	BOLT	
18	NUT	AISI 304

DN	d	L	H	W	S	h1	h2	d1	d2	d3	Ra	Rb	Torque (N·m)
8	11.6	58	62	113.5	9	8	36.4	31	36	42	2.75	2.75	5.5
10	12.7	58	62	113.5	9	8	36.4	31	36	42	2.75	2.75	5.5
15	15	58	62	113.5	9	8	36.4	31	36	42	2.75	2.75	5.5
20	20	65.6	65	113.5	9	9	39.2	31	36	42	2.75	2.75	7.5
25	25	78.7	76	140	11	11	48.7	35.5	42	50	2.75	3.5	11
32	32	90	81.5	140	11	11	54.2	35.5	42	50	2.75	3.5	15
40	38	105	103	172	14	11.5	65.7	56	50	70	3.5	4.5	20
50	50	124	111.5	172	14	11.5	75.5	56	50	70	3.5	4.5	40
65	63	146.2	141	325	17	20.5	91.5	76	70	102	4.5	5.5	60
80	76	163.7	150	325	17	20.5	100.75	76	70	102	4.5	5.5	85

NPS	d	L	H	W	S	h1	h2	d1	d2	d3	Ra	Rb	Torque (in·lb)
1/4"	0.46	2.28	2.44	4.47	0.35	0.31	1.43	1.22	1.42	1.65	0.11	0.11	48.7
3/8"	0.5	2.28	2.44	4.47	0.35	0.31	1.43	1.22	1.42	1.65	0.11	0.11	48.7
1/2"	0.59	2.28	2.44	4.47	0.35	0.31	1.43	1.22	1.42	1.65	0.11	0.11	48.7
3/4"	0.79	2.58	2.56	4.47	0.35	0.35	1.54	1.22	1.42	1.65	0.11	0.11	66.4
1"	0.98	3.1	2.99	5.51	0.43	0.43	1.92	1.4	1.65	1.97	0.11	0.14	97.4
1-1/4"	1.26	3.54	3.21	5.51	0.43	0.43	2.13	1.4	1.65	1.97	0.11	0.14	132.8
1-1/2"	1.5	4.13	4.1	6.77	0.55	0.45	2.59	2.2	1.97	2.76	0.14	0.18	177
2"	1.97	4.88	4.39	6.77	0.55	0.45	2.97	2.2	1.97	2.76	0.14	0.18	354
2-1/2"	2.48	5.76	5.55	12.8	0.67	0.81	3.6	2.99	2.76	4.02	0.18	0.22	531
3"	2.99	6.44	5.91	12.8	0.67	0.81	3.97	2.99	2.76	4.02	0.18	0.22	752.3

unit: in

8F., No.201, Sec. 2, Tiding Blvd., Neihu District, Taipei City 114, Taiwan R.O.C.
 TEL : +886-2-2658-5800 FAX : +886-2-2658-2266 / 2799-7766

[Http://www.haitima.com.tw](http://www.haitima.com.tw)
 E-mail : haitima@seed.net.tw