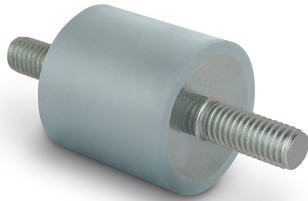


## Item description/product images



## Description

**Material, version:**

Metal parts, stainless steel 1.4401.

Elastomer, natural rubber, hardness medium Shore 55A, grey.

**Note:**

Rubber-metal buffers are used i.e. to protect equipment in storage, as elastic buffers to limit the travel of a moving mass or as feet for machines and equipment that are not screwed down and stand on sensitive flooring e.g. office equipment. Natural rubber does not leave marks or discolouring on floors.

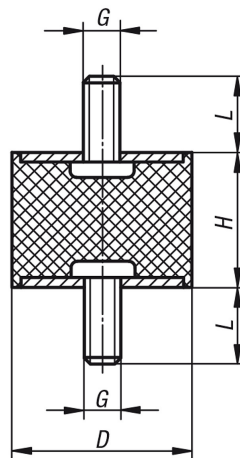
**Temperature range:**

-30°C to +80°C.

**On request:**

Metal parts, stainless steel 1.4301.

## Drawings



## Overview of items

Order No.	D	G	L	H	Approx. weight kg
50-173-1	8	M3	6	8	0,001
50-173-2	10	M4	10	10	0,0032
50-173-3	10	M4	10	15	0,0039
50-173-4	15	M4	10	8	0,006
50-173-5	15	M4	10	10	0,0064
50-173-6	15	M4	10	15	0,0078
50-173-7	20	M6	18	8	0,015
50-173-8	20	M6	18	10	0,015
50-173-9	20	M6	18	15	0,02
50-173-10	20	M6	18	20	0,019
50-173-11	20	M6	18	25	0,02
50-173-12	25	M6	18	10	0,02
50-173-13	25	M6	18	15	0,0275
50-173-14	25	M6	18	20	0,03
50-173-15	25	M6	18	25	0,032
50-173-16	25	M6	18	30	0,04
50-173-17	30	M8	23	15	0,037

## Overview of items

Order No.	D	G	L	H	Approx. weight kg
50-173-18	30	M8	23	20	0,056
50-173-19	30	M8	23	25	0,058
50-173-20	30	M8	23	30	0,065
50-173-21	30	M8	23	40	0,074
50-173-22	40	M8	23	15	0,079
50-173-23	40	M8	23	20	0,082
50-173-24	40	M8	23	30	0,102
50-173-25	40	M8	23	40	0,115
50-173-26	50	M10	28	20	0,141
50-173-27	50	M10	28	25	0,155
50-173-28	50	M10	28	30	0,163
50-173-29	50	M10	28	40	0,178
50-173-30	50	M10	28	50	0,199
50-173-31	60	M10	28	40	0,231
50-173-32	70	M10	28	45	0,401
50-173-33	75	M12	37	25	0,369
50-173-34	75	M12	37	40	0,42
50-173-35	75	M12	37	50	0,483
50-173-36	75	M12	37	55	0,514