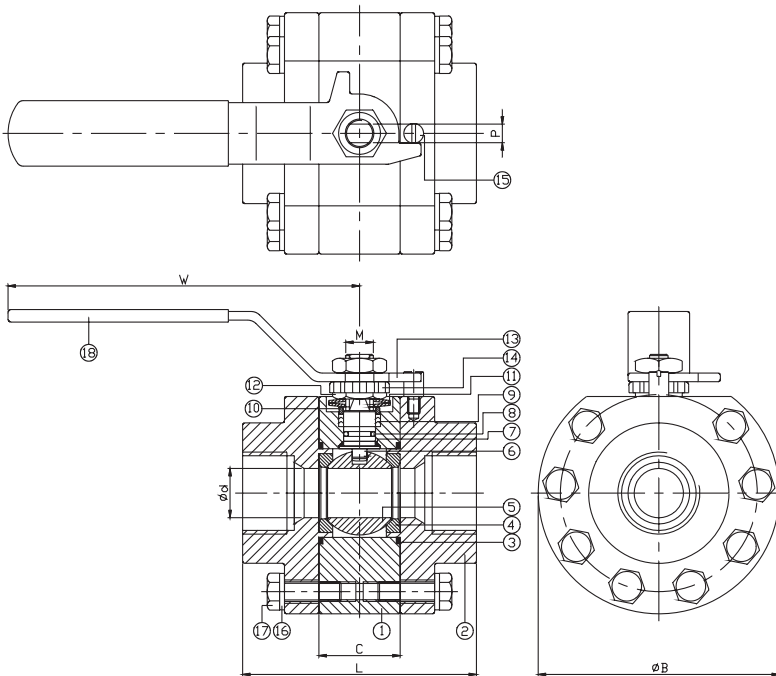




FEATURES

- 1/4"~2" (DN8~DN50)
- W.P. : 6000 WOG (PN420)
- W.T. : -20°C~260°C (-4°F~500°F)
- **Forged body**
- Blow-out proof stem
- Live-loading design
- **NACE MR0175**
- **API 607 Fire safe design**
- End connection: Thread end
Socket weld
Butt weld



ITEM	PARTS	MATERIAL	
1	BODY	ASTM A182 F316	ASTM A105
2	CAP		
3	BALL SEAL	DELTRIN	
4	SEAT	DELTRIN / PEEK	
5	BALL	AISI 316	
6	STEM	AISI 304	
7	THRUST WASHER	DELTRIN	
8	O-RING	VITON	
9	STEM PACKING	CTFE	
10	GLAND	AISI 304	
11	BELLEVILLE WASHER	AISI 301	
12	STEM NUT	AISI 304	
13	HANDLE	AISI 304	
14	LOCK WASHER	AISI 304	
15	STOP PIN	AISI 304	
16	BOLT WASHER	AISI 304	
17	BOLT	AISI 304	
18	HANDLE SLEEVE	PVC	

- DELTRIN SEAT MAX USING TEMPERATURE: 80°C

DN	d (Reduced bore)	d (Full bore)	B	C	W	L	M	P
8	9.7	11.6	76	25	142	75	3/8" UNF	5.54
10	11.6	12.5	76	25	142	75	3/8" UNF	5.54
15	12.5	15	76	25	142	75	3/8" UNF	5.54
20	15	20	84	33	142	85	3/8" UNF	5.54
25	20	25	98	33	162	95	7/16" UNF	7.54
32	25	32	107	41	162	108	7/16" UNF	7.54
40	32	38	130	50	200	128	9/16" UNF	8.68
50	38	50	146	56	200	156	9/16" UNF	8.68

unit:mm

NPS	d (Reduced bore)	d (Full bore)	B	C	W	L	M	P
1/4"	0.38	0.46	2.99	0.98	5.59	2.95	3/8" UNF	0.22
3/8"	0.46	0.49	2.99	0.98	5.59	2.95	3/8" UNF	0.22
1/2"	0.49	0.59	2.99	0.98	5.59	2.95	3/8" UNF	0.22
3/4"	0.59	0.79	3.31	1.3	5.59	3.35	3/8" UNF	0.22
1"	0.79	0.98	3.86	1.3	6.38	3.74	7/16" UNF	0.3
1-1/4"	0.98	1.26	4.21	1.61	6.38	4.25	7/16" UNF	0.3
1-1/2"	1.26	1.5	5.12	1.97	7.87	5.04	9/16" UNF	0.34
2"	1.5	1.97	5.7	2.2	7.87	6.14	9/16" UNF	0.34

unit:in

