



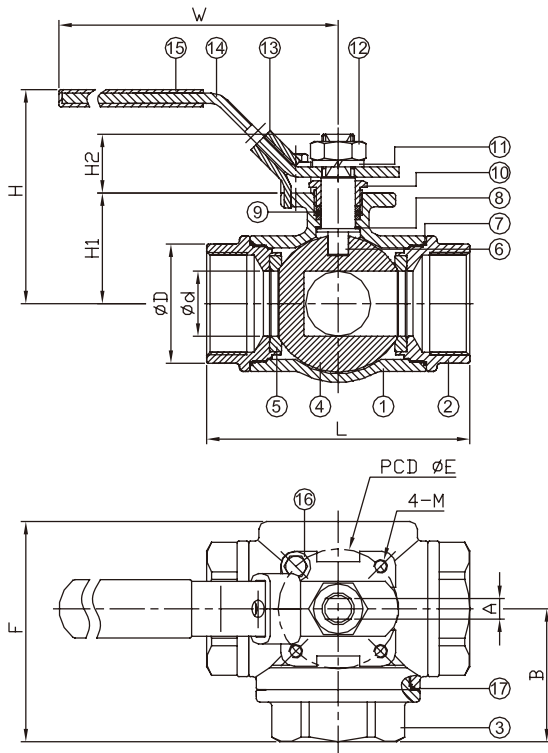
# 3-WAY SCREWED END BALL VALVE

# 2057N



## FEATURES

- L port / T port, 1/4"~2" (DN8~DN50)
- W.P. : 1000 WOG (PN63)
- W.T. : -20°C~200°C (-4°F~392°F)
- Investment casting
- Blow-out proof stem
- Locking device
- Anti-static device (option)
- ISO 5211 Mounting pad
- Thread type : ASME B1.20.1 (NPT)  
DIN2999 & BS21  
ISO7/1 & EN10226



ITEM	PARTS	MATERIAL
1	BODY	ASTM A351-CF8M
2	CAP-A	
3	CAP-B	
4	BALL	
5	SEAT	PTFE
6	STEM	AISI 316
7	SEAL-A	PTFE
8	THRUST WASHER	
9	PACKING	AISI 304
10	GLAND NUT	
11	SPRING WASHER	
12	STEM NUT	
13	LOCKING DEVICE	AISI 304
14	HANDLE	
15	HANDLE SLEEVE	PVC
16	STOP PIN	AISI 304
17	SEAL-B	PTFE

DN	d	D	L	B	F	H	W	E	M	H1	H2	A	Torque (N-M)
8	11.6	25.5	76	37.3	58.5	67	153	42	M5	29.1	18	8	7.9
10	12.5	25.5	76	37.3	58.5	67	153	42	M5	29.1	18	8	8.1
15	12.5	25.5	76	37.3	58.5	67	153	42	M5	29.1	18	8	11.3
20	16	32	86	44	72	77	153	42	M5	38.5	20	8	14.5
25	20	38.5	99	49	81.5	83	183	50	M6	43	23	9.5	20
32	25	48.5	117	57	94.5	88	183	50	M6	47.8	23	9.5	23.8
40	32	58.5	124	61.3	104	116	246	70	M8	55.7	34	12.5	34.8
50	38	69.5	148	74.3	125	124	246	70	M8	64.5	34	12.5	58.1

unit:mm

NPS	d	D	L	B	F	H	W	E	M	H1	H2	A	Torque (in-lb)
1/4"	0.46	1	2.99	1.47	2.3	2.64	6.02	1.65	M5	1.15	0.71	0.31	70.1
3/8"	0.49	1	2.99	1.47	2.3	2.64	6.02	1.65	M5	1.15	0.71	0.31	72
1/2"	0.49	1	2.99	1.47	2.3	2.64	6.02	1.65	M5	1.15	0.71	0.31	100.3
3/4"	0.63	1.26	3.39	1.73	2.83	3.03	6.02	1.65	M5	1.52	0.79	0.31	128.5
1"	0.79	1.52	3.9	1.93	3.21	3.27	7.2	1.97	M6	1.69	0.91	0.37	177.2
1-1/4"	0.98	1.91	4.61	2.24	3.72	3.46	7.2	1.97	M6	1.88	0.91	0.37	210.3
1-1/2"	1.26	2.3	4.88	2.41	4.09	4.57	9.69	2.76	M8	2.19	1.34	0.49	307.7
2"	1.5	2.74	5.83	2.93	4.92	4.88	9.69	2.76	M8	2.54	1.34	0.49	514

unit:in

