

fomaco

The injector
that doesn't care
what product it pumps



FGM 20/40 & FGM 20/20

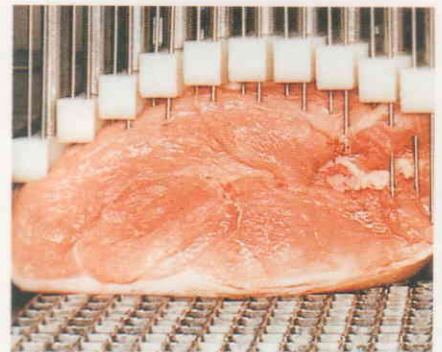
FOMACO PICKLE INJECTORS

for all kind of meat products of pork, beef, lamb, poultry and fish
— bone in and boneless

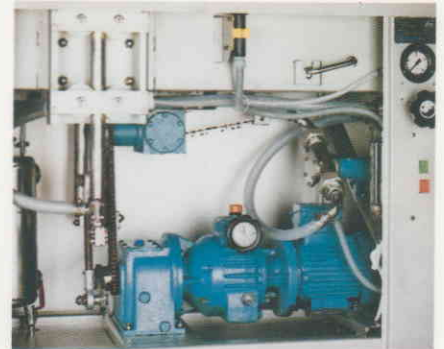


Model FGM 20/40 & Model FGM 20/20

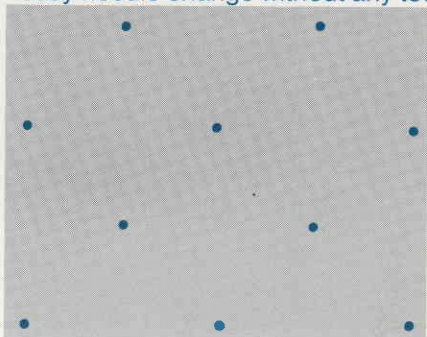
Both models have same quality features - exact injection - easy cleaning - easy needle change without any tools.



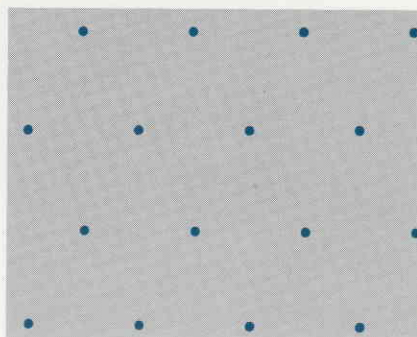
Valve system - brine is only injected when needles are in product. Product is held in place by the needle guides/meat strippers.



Motor compartment is fully enclosed in stainless steel - easy access from both sides.



NEEDLE PATTERNS: FGM 20/20



FGM 20/40

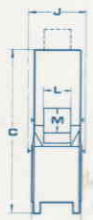
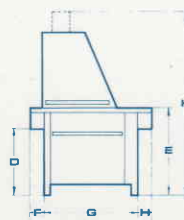


FGM 20/20. With nylon belt and 5 feet.

SPECIFICATIONS:

	FGM 20/40	FGM 20/20
Motor	1,5 HP	1,5 HP
Pump capacity	31 L/min.	31 L/min.
Pump type	JABSCO	JABSCO
	10120-200	10120-200
Number of needles	40 needles	20 needles
Needle bridge stroke/min.	15-65	15-65
Needle guides/meat strippers	10	5
Number of valves	10	5
Conveyor belt	Stainless steel	Nylon

Production rates: Please let us advise you which of our injectors is most suitable for your production requirement.



Model	A	B	C	D	E	F	G	H	I	J	K	L	M
FGM 20/20	131	49	173	70	70	15	100	15	90	55	243	30	23
FGM 20/40	131	49	173	70	70	15	100	15	90	55	243	30	23

fomaco
FOOD MACHINERY COMPANY A/S

Havnegade 47, DK-1058 Copenhagen K,

Represented by:

ROBERT REISER & CO., INC., Food Equipment Division