

Item description/product images



Description

Material:

Thread sleeve stainless 1.4305.
 Indexing pin stainless 1.4305.
 Keyring stainless 1.4310.

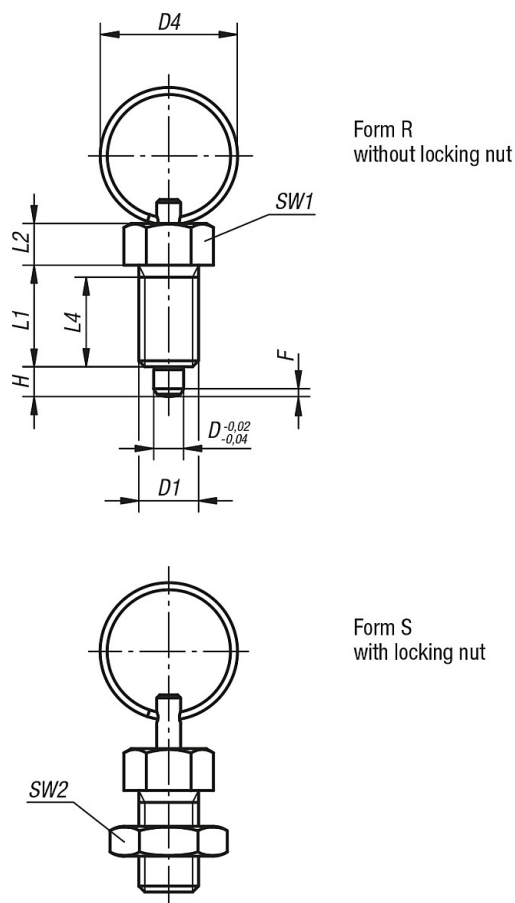
Version:

Threaded sleeve, bright.
 Indexing pin, ground, not hardened.

Note:

Indexing plungers are used where any change in locking position due to lateral forces should be prevented. A new locking position can only be attained after the pin has been manually disengaged. The keyring allows for automatic operation (program controlled) using e.g. pneumatic cylinders or remote control using bowden cables.

Drawings



Overview of items

Order No.	Form	Size	D	D1	D4	L1	L2	L4	H	SW1	SW2	F x 30°	Spring force initial pressure F1 approx. N	Spring force final pressure F2 approx. N
30-43-0	R	0	4	M8x1	15	15	6	13	4	10	-	1	6	12
30-43-1	R	1	5	M10x1	23	17	7	15	5	13	-	1,3	5	12

Overview of items

Order No.	Form	Size	D	D1	D4	L1	L2	L4	H	SW1	SW2	F x 30°	Spring force initial pressure F1 approx. N	Spring force final pressure F2 approx. N
30-43-2	R	2	6	M12x1,5	23	20	8	17	6	14	-	1,8	6	14
30-43-3	R	3	8	M16x1,5	28	26	10	23	8	19	-	2,3	15	35
30-43-4	R	4	10	M20x1,5	28	28	12	25	10	22	-	2,8	15	34
30-44-0	S	0	4	M8x1	15	15	6	13	4	10	13	1	6	12
30-44-1	S	1	5	M10x1	23	17	7	15	5	13	17	1,3	5	12
30-44-2	S	2	6	M12x1,5	23	20	8	17	6	14	19	1,8	6	14
30-44-3	S	3	8	M16x1,5	28	26	10	23	8	19	24	2,3	15	35
30-44-4	S	4	10	M20x1,5	28	28	12	25	10	22	30	2,8	15	34