

Item description/product images

**Description****Material:**

Thread sleeve stainless 1.4305.

Indexing pin stainless 1.4304.

Mushroom knob stainless 1.4305.

Version:

Threaded sleeve, bright.

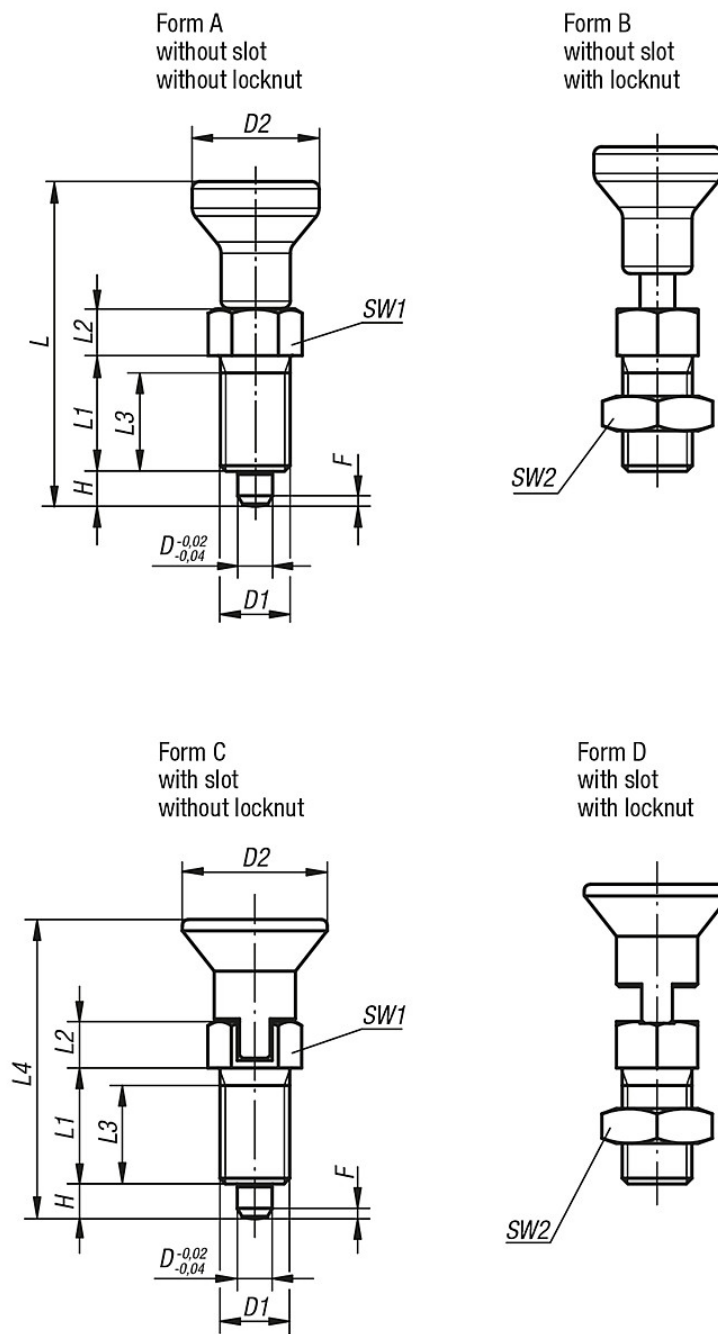
Indexing pin, ground.

Mushroom knob, electrolytic polished.

Note:

Indexing plungers are used where any change in locking position due to lateral forces should be prevented. A new locking position can only be attained after the pin has been manually disengaged. Forms C or D should be used where the plunger remains disengaged for an extended period and the indexing pin prevented from springing back.

Drawings



Overview of items

Order No.	Version	Form	Size	D	D1	D2	L	L1	L2	L3	L4	H	SW1	SW2	F x 30°	Spring force initial pressure F1 approx. N	Spring force final pressure F2 approx. N
30-54-1	Indexing pin hardened	A	0	4	M8x1	18	43	15	6	13	-	4	10	-	1	6	12
30-54-2	Indexing pin hardened	A	1	5	M10x1	21	50	17	7	15	-	5	13	-	1,3	5	12
30-54-3	Indexing pin hardened	A	2	6	M12x1,5	25	59	20	8	17	-	6	14	-	1,8	6	14
30-54-4	Indexing pin hardened	A	3	8	M16x1,5	33	77	26	10	23	-	8	19	-	2,3	15	35
30-54-5	Indexing pin hardened	A	4	10	M20x1,5	33	83	28	12	25	-	10	22	-	2,8	15	34
30-55-1	Indexing pin hardened	B	0	4	M8x1	18	43	15	6	13	-	4	10	13	1	6	12
30-55-2	Indexing pin hardened	B	1	5	M10x1	21	50	17	7	15	-	5	13	17	1,3	5	12
30-55-3	Indexing pin hardened	B	2	6	M12x1,5	25	59	20	8	17	-	6	14	19	1,8	6	14
30-55-4	Indexing pin hardened	B	3	8	M16x1,5	33	77	26	10	23	-	8	19	24	2,3	15	35

Overview of items

Order No.	Version	Form	Size	D	D1	D2	L	L1	L2	L3	L4	H	SW1	SW2	F x 30°	Spring force initial pressure F1 approx. N	Spring force final pressure F2 approx. N
30-55-5	Indexing pin hardened	B	4	10	M20x1,5	33	83	28	12	25	-	10	22	30	2,8	15	34
30-56-1	Indexing pin hardened	C	0	4	M8x1	18	-	15	6	13	38,5	4	10	-	1	6	12
30-56-2	Indexing pin hardened	C	1	5	M10x1	21	-	17	7	15	43,5	5	13	-	1,3	5	12
30-56-3	Indexing pin hardened	C	2	6	M12x1,5	25	-	20	8	17	51,7	6	14	-	1,8	6	14
30-56-4	Indexing pin hardened	C	3	8	M16x1,5	33	-	26	10	23	68	8	19	-	2,3	15	35
30-56-5	Indexing pin hardened	C	4	10	M20x1,5	33	-	28	12	25	74	10	22	-	2,8	15	34
30-57-1	Indexing pin hardened	D	0	4	M8x1	18	-	15	6	13	38,5	4	10	13	1	6	12
30-57-2	Indexing pin hardened	D	1	5	M10x1	21	-	17	7	15	43,5	5	13	17	1,3	5	12
30-57-3	Indexing pin hardened	D	2	6	M12x1,5	25	-	20	8	17	51,7	6	14	19	1,8	6	14
30-57-4	Indexing pin hardened	D	3	8	M16x1,5	33	-	26	10	23	68	8	19	24	2,3	15	35
30-57-5	Indexing pin hardened	D	4	10	M20x1,5	33	-	28	12	25	74	10	22	30	2,8	15	34
30-58-1	Locking pin not hardened	A	0	4	M8x1	18	43	15	6	13	-	4	10	-	1	6	12
30-58-2	Locking pin not hardened	A	1	5	M10x1	21	50	17	7	15	-	5	13	-	1,3	5	12
30-58-3	Locking pin not hardened	A	2	6	M12x1,5	25	59	20	8	17	-	6	14	-	1,8	6	14
30-58-4	Locking pin not hardened	A	3	8	M16x1,5	33	77	26	10	23	-	8	19	-	2,3	15	35
30-58-5	Locking pin not hardened	A	4	10	M20x1,5	33	83	28	12	25	-	10	22	-	2,8	15	34
30-59-1	Locking pin not hardened	B	0	4	M8x1	18	43	15	6	13	-	4	10	13	1	6	12
30-59-2	Locking pin not hardened	B	1	5	M10x1	21	50	17	7	15	-	5	13	17	1,3	5	12
30-59-3	Locking pin not hardened	B	2	6	M12x1,5	25	59	20	8	17	-	6	14	19	1,8	6	14
30-59-4	Locking pin not hardened	B	3	8	M16x1,5	33	77	26	10	23	-	8	19	24	2,3	15	35
30-59-5	Locking pin not hardened	B	4	10	M20x1,5	33	83	28	12	25	-	10	22	30	2,8	15	34
30-60-1	Locking pin not hardened	C	0	4	M8x1	18	-	15	6	13	38,5	4	10	-	1	6	12
30-60-2	Locking pin not hardened	C	1	5	M10x1	21	-	17	7	15	43,5	5	13	-	1,3	5	12
30-60-3	Locking pin not hardened	C	2	6	M12x1,5	25	-	20	8	17	51,7	6	14	-	1,8	6	14
30-60-4	Locking pin not hardened	C	3	8	M16x1,5	33	-	26	10	23	68	8	19	-	2,3	15	35
30-60-5	Locking pin not hardened	C	4	10	M20x1,5	33	-	28	12	25	74	10	22	-	2,8	15	34
30-61-1	Locking pin not hardened	D	0	4	M8x1	18	-	15	6	13	38,5	4	10	13	1	6	12
30-61-2	Locking pin not hardened	D	1	5	M10x1	21	-	17	7	15	43,5	5	13	17	1,3	5	12
30-61-3	Locking pin not hardened	D	2	6	M12x1,5	25	-	20	8	17	51,7	6	14	19	1,8	6	14
30-61-4	Locking pin not hardened	D	3	8	M16x1,5	33	-	26	10	23	68	8	19	24	2,3	15	35
30-61-5	Locking pin not hardened	D	4	10	M20x1,5	33	-	28	12	25	74	10	22	30	2,8	15	34