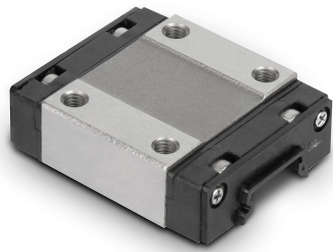


Item description/product images

**Description****Material:**

Body stainless steel 1.4034

Bearing balls stainless steel 1.4034

Deflection units plastic

Version:

Bright.

Note:

Standard miniature carriage with linear recirculating ball bearing guides precision N and zero play (Z0).

End seals both sides. 4 point contact recirculating ball bearing system with equal load angles and 2 recirculating ball bearing raceways per carriage. This system ensures the carriage can take loads equally from all directions.

Max. acceleration: 80 m/s²

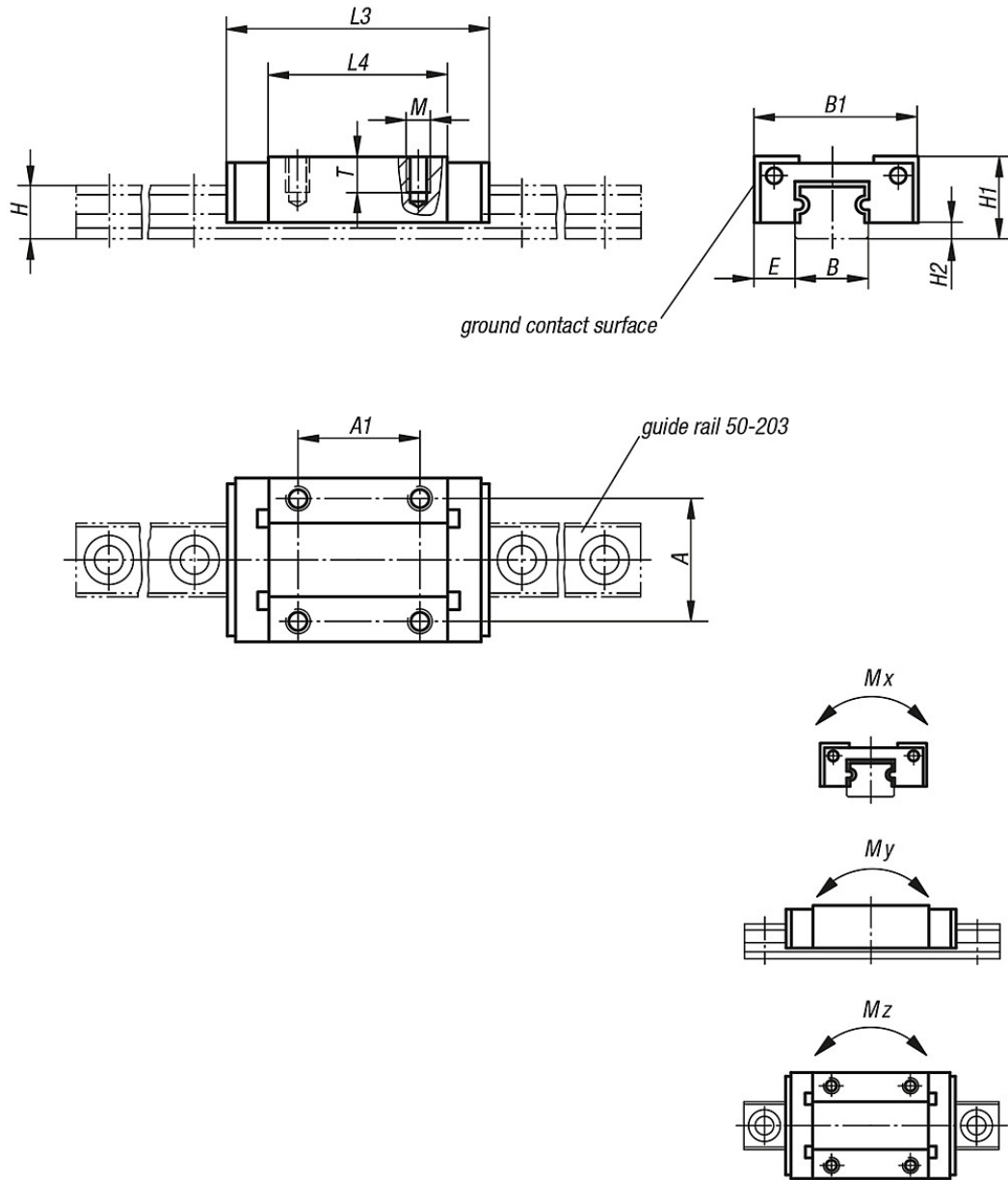
Max. linear speed: 3 m/s

Application temp: -20 °C to +80 °C

Suitable rails:

50-203. Always use the supplied assembly rails as otherwise the ball retention in the carriage cannot be guaranteed.

Drawings



Overview of items

Order No.	Size	Mx Nm	My Nm	Mz Nm	Dynamic load rating N	Static load rating N	A	A1	B	B1	E	H	H1	H2	L3	L4	M	T
50-201-1	7	5,1	2,55	2,55	880	1.370	12	8	7	17	5	4,7	8	1,5	23,5	13,5	M2	2,5
50-201-2	9	10,4	5,1	5,1	1.470	2.250	15	10	9	20	5,5	5,5	10	2,2	31	20	M3	3
50-201-3	12	14,7	8,04	8,72	2.665	4.020	20	15	12	27	7,5	7,5	13	3	35	20,8	M3	3,5
50-201-4	15	30,2	16,5	17,9	4.410	6.570	25	20	15	32	8,5	9,5	16	4	43	25,7	M3	4