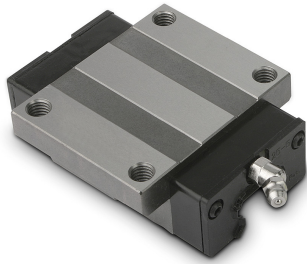


Item description/product images



Description

Material:

Stainless steel 1.4125
Deflection units plastic

Version:

Bright.

Note:

Carriage, flange and rails are case hardened.

Constructed in an X arrangement so that a certain amount of angle adjustment is possible. Carriage with 2 recirculating balls bearing guides precision N and zero play (Z0).

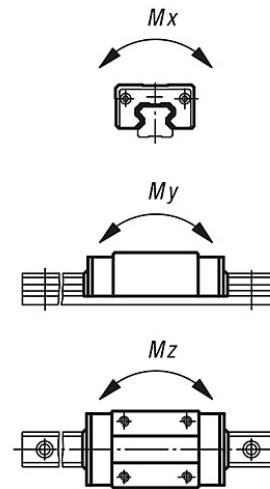
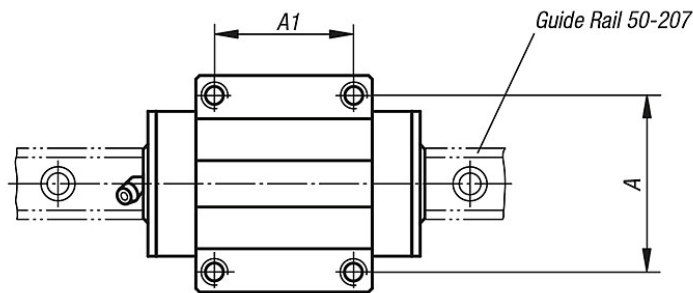
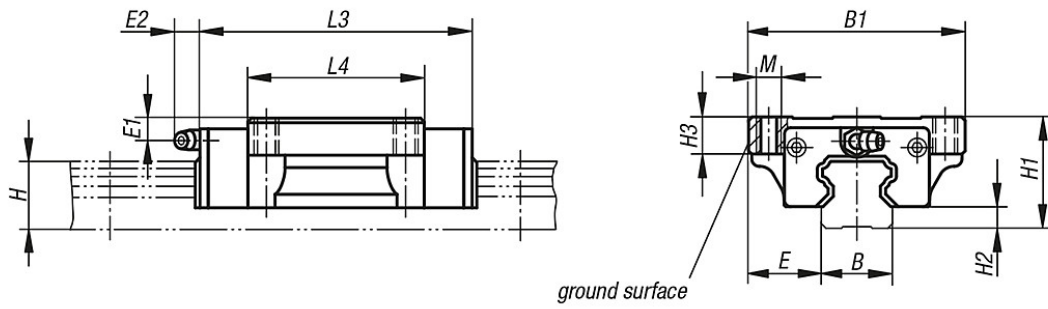
High dynamic value: $v = 5 \text{ m/s}$

Max. temperature in continuous operation: $80 \text{ }^\circ\text{C}$

On request:

Various precision and preload classes.

Drawings



Overview of items

Order No.	Size	Mx Nm	My Nm	Mz Nm	Dynamic load rating N	Static load rating N	Lubrication hole	A	A1	B	B1	E	E1	E2	H	H1	H2	L3	L4	M	H3
50-206-1	15	108	95	80	10.800	20.700	∅3	38	30	15	47	16	4,6	3,3	15	24	4,6	55	39	M5	8
50-206-2	20	219	185	155	17.400	32.500	M6x0,75	53	40	20	63	21,5	5	11	18	30	5	69,8	58	M6	10
50-206-3	25	360	320	267	25.600	46.000	M6x0,75	57	45	23	70	23,5	6	11	22	36	7	79	58	M6	10