

Item description/product images



Description

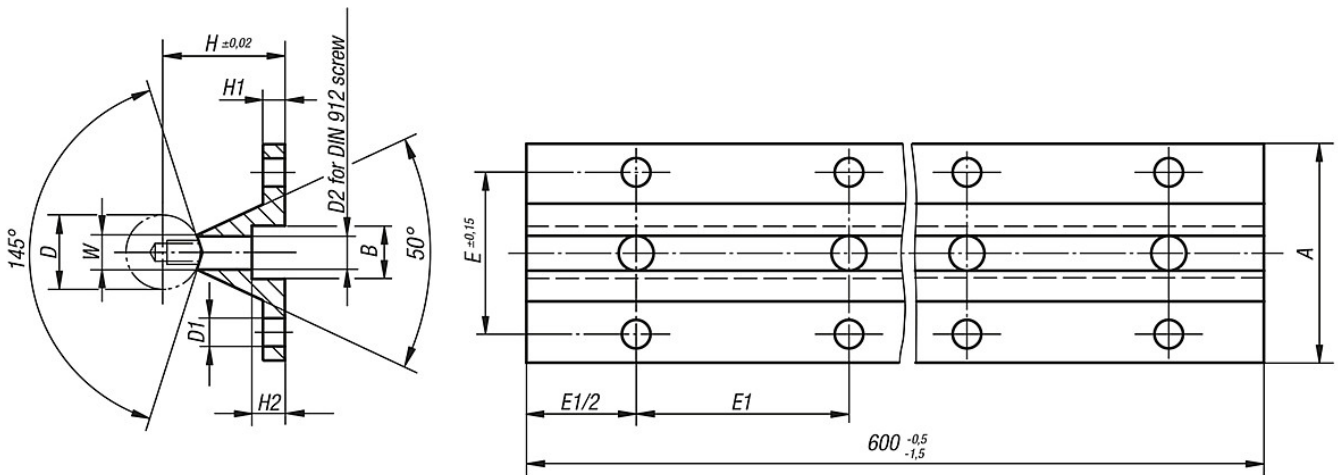
Material:
 Aluminium

Version:
 Support bright aluminium.
 600 mm long.
 Hole spacing dimension E1.

Note:
 The shaft is mounted on the support, this is then used as support rail for further assemblies.
 The support rail is available with hole spacing E1.

On request:
 1200 mm long.

Drawings



Overview of items

Order No.	A	B	D	D1	D2	E	E1	H	H1	H2	W
50-134-1	40	8	12	4,5	4,5	29	75	22	5	5	5,8
50-134-2	45	9,5	16	5,5	5,5	33	100	26	5	6	7
50-134-3	52	11	20	6,6	6,6	37	100	32	6	6,5	8,3
50-134-4	57	14	25	6,6	9	42	120	36	6	8,5	10,8
50-134-5	69	17	30	9	11	51	150	42	7	10,5	11
50-134-11	40	8	12	4,5	4,5	29	120	22	5	5	5,8
50-134-12	45	9,5	16	5,5	5,5	33	150	26	5	6	7
50-134-13	52	11	20	6,6	6,6	37	150	32	6	6,5	8,3
50-134-14	57	14	25	6,6	9	42	200	36	6	8,5	10,8
50-134-15	69	17	30	9	11	51	200	42	7	10,5	11