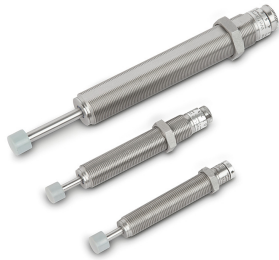


Item description/product images



Description

Material:

Housing and nut stainless steel, bright.

Piston hardened and aluminium-titanium coated.

Impact head plastic.

Filled with vegetable oil.

Note:

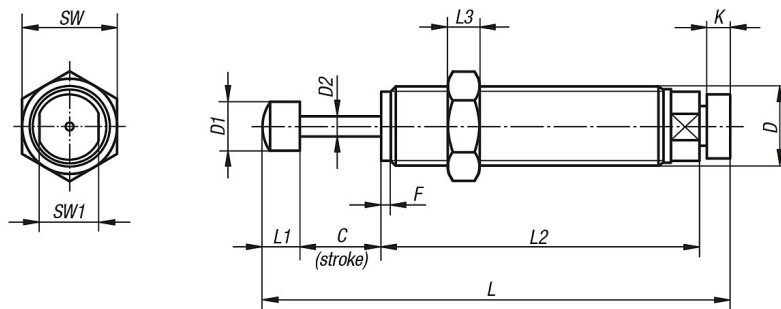
Industrial shock absorbers are maintenance free, ready to install hydraulic components. They have an integrated fixed stop. The adjustable design allows for precise shock absorption settings. After installation the equipment is activated a few times during which the shock absorber is adjusted until the desired absorption is attained.

Can be installed in any position.

Temperature range:

-20 °C to +80 °C.

Drawings



Overview of items

| Order No. | C | D | D1 | D2 | F | K | L | L1 | L2 | L3 | SW | SW1 |
|-----------|----|-------|----|-----|-----|-----|------|-----|------|----|----|-----|
| 50-300-1 | 7 | M8x1 | 6 | 2,5 | 2,5 | 3,5 | 61,5 | 5,5 | 45 | 3 | 11 | - |
| 50-300-2 | 10 | M10x1 | 6 | 3 | 2,5 | 3,5 | 68,5 | 6,5 | 48,5 | 3 | 13 | - |
| 50-300-3 | 12 | M12x1 | 10 | 4 | 2,5 | 3,5 | 89,5 | 8 | 66 | 4 | 14 | - |
| 50-300-4 | 14 | M14x1 | 10 | 4 | 2,5 | 4,5 | 105 | 8 | 78 | 5 | 17 | 13 |
| 50-300-5 | 40 | M20x1 | 12 | 6 | 2,5 | 6 | 181 | 10 | 125 | 6 | 24 | 18 |

| Order No. | max. energy input per stroke Nm | max. energy input per hour Nm | effective mass max. kg |
|-----------|---------------------------------------|-------------------------------------|---------------------------|
| 50-300-1 | 4 | 14.400 | 50 |
| 50-300-2 | 15 | 24.000 | 500 |
| 50-300-3 | 22 | 35.200 | 800 |
| 50-300-4 | 30 | 50.000 | 1.500 |
| 50-300-5 | 125 | 95.625 | 6.300 |