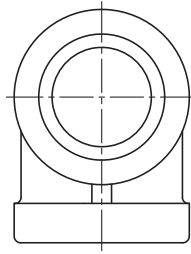
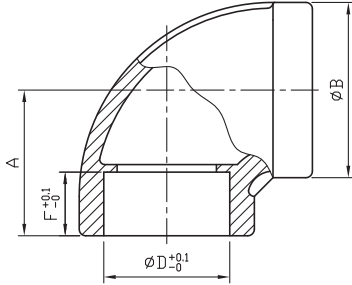


# Elbow 90° sw

# F34

## Class 150



## Standard Pattern

SIZE	1/8"		1/4"		3/8"		1/2"		3/4"		1"		1-1/4"		1-1/2"		2"		2-1/2"		3"		4"	
	mm	in	mm	in	mm	in	mm	in	mm	in	mm	in	mm	in	mm	in	mm	in	mm	in	mm	in	mm	in
A	17	0.67	19	0.75	21.5	0.85	27	1.06	30	1.18	35	1.38	43	1.69	45	1.77	54	2.13	69	2.72	72	2.83	89	3.5
B	15.5	0.61	18.8	0.74	22.5	0.89	29	1.14	33.2	1.31	41.2	1.62	48.5	1.91	54.9	2.2	69	2.72	81.3	3.2	100.5	3.96	126.5	4.98
D	11	0.43	14	0.55	17.5	0.69	22	0.87	27.5	1.08	34	1.34	43.3	1.7	49	1.93	61	2.4	73.5	2.89	89.8	3.54	115.5	4.55
F	8.1	0.32	8.1	0.32	8.1	0.32	8.1	0.32	9.4	0.37	11.2	0.44	12.7	0.5	12.7	0.5	14.2	0.56	14.2	0.56	14.2	0.56	17.5	0.69

Tolerance:  $\pm 0.5\text{mm}$  (1/8"~2")  
 $\pm 0.8\text{mm}$  (2-1/2"~4")



8F., No.201, Sec. 2, Tiding Blvd., Neihu District, Taipei City 114, Taiwan R.O.C.  
 TEL : +886-2-2658-5800 FAX : +886-2-2658-2266 / 2799-7766

[Http://www.haitima.com.tw](http://www.haitima.com.tw)  
 E-mail : [haitima@seed.net.tw](mailto:haitima@seed.net.tw)