

**Item description/product images**



**Description**

**Material:**

Ceramic bearings ZrO<sub>2</sub>.

Bearing cage PTFE.

**Version:**

Natural, pale yellow.

**Note:**

Zirconia (ZrO<sub>2</sub>) is a cost-effective alternative to Si<sub>3</sub>N<sub>4</sub>.

It also has the advantage that the thermal expansion is similar to that of steel.

This means that a shrink fit is not required as expansion differences between the bearing housing and a steel shaft do not occur.

**On request:**

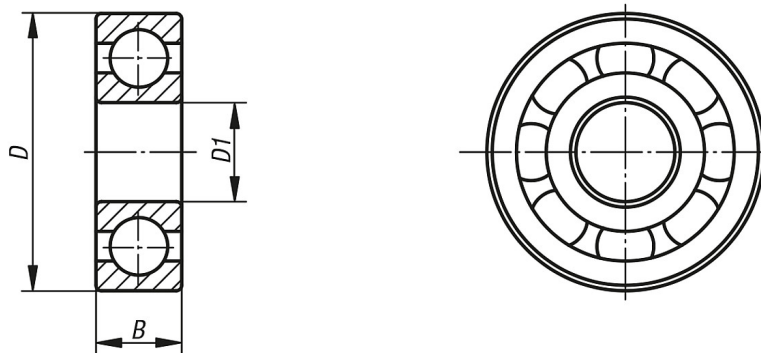
Special version with PEEK ball cage.

Without ball cage.

**Attention:**

Reacts with concentrated hydrochloric acid, nitric acid and sulphuric acid.

**Drawings**



**Overview of items**

Order No.	B	D	D1	Dynamic base loads kN	Static base loads kN	max. speed U/min
50-403-1	7	22	8	2	1	37.000
50-403-2	8	26	10	3	1,4	31.000
50-403-3	8	28	12	3,3	1,7	29.000
50-403-4	9	32	15	3,6	2,1	24.000
50-403-5	10	35	17	3,9	2,3	21.000
50-403-6	12	42	20	6	3,7	18.000
50-403-7	12	47	25	6,5	5,8	15.000
50-403-8	13	55	30	8,5	7,6	12.500