

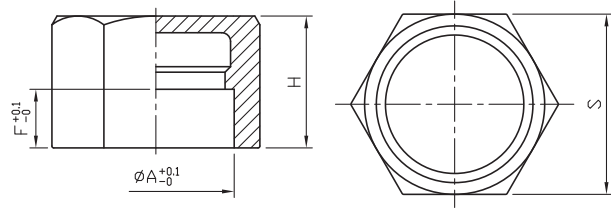
Hexagon Cap sw

F38

Class 150

Standard Pattern

SIZE	A		F		H		S	
	mm	in	mm	in	mm	in	mm	in
1/8"	11	0.43	8.1	0.32	15.5	0.61	14.2	0.56
1/4"	14	0.55	8.1	0.32	17	0.67	17.5	0.69
3/8"	17.5	0.69	8.1	0.32	17.5	0.69	21.2	0.83
1/2"	22	0.87	8.1	0.32	20	0.79	25.5	1
3/4"	27.3	1.07	9.4	0.37	20.4	0.8	30.1	1.19
1"	34	1.34	11.2	0.44	27.1	1.07	37.4	1.47
1-1/4"	43.3	1.7	12.7	0.5	30	1.18	47	1.85
1-1/2"	49	1.93	12.7	0.5	30.3	1.19	53.2	2.09
2"	61	2.4	14.2	0.56	32.3	1.27	66	2.6
2-1/2"	73.5	2.89	14.2	0.56	35.2	1.39	81	3.19
3"	89.8	3.54	14.2	0.56	38.4	1.51	95.8	3.77
4"	115.5	4.55	17.5	0.69	41	1.61	122.2	4.81



Tolerance: $\pm 0.5\text{mm}$ (1/8"~2")
 $\pm 0.8\text{mm}$ (2-1/2"~4")



8F., No.201, Sec. 2, Tiding Blvd., Neihu District, Taipei City 114, Taiwan R.O.C.
 TEL : +886-2-2658-5800 FAX : +886-2-2658-2266 / 2799-7766

[Http://www.haitima.com.tw](http://www.haitima.com.tw)
 E-mail : haitima@seed.net.tw