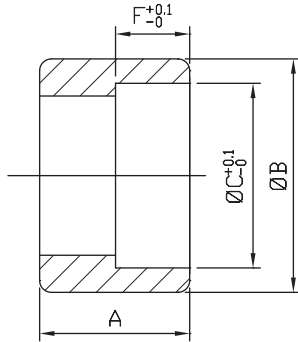


# Half Coupling sw



## F42

Class  
150

### Standard Pattern

SIZE	1/8"		1/4"		3/8"		1/2"		3/4"		1"		1-1/4"		1-1/2"		2"		2-1/2"		3"		4"	
	mm	in	mm	in	mm	in	mm	in	mm	in	mm	in	mm	in	mm	in	mm	in	mm	in	mm	in	mm	in
A	12	0.47	12	0.47	13	0.51	16.5	0.65	18.5	0.73	19.5	0.77	22.5	0.89	23	0.91	26.5	1.04	31.5	1.24	34.5	1.36	37	1.46
B	13.5	0.53	18	0.71	21.5	0.85	26	1.02	31.5	1.24	39	1.54	48	1.89	54	2.13	66.5	2.62	83	3.27	95	3.74	122	4.8
C	10.8	0.43	14	0.55	17.5	0.69	22	0.87	27.3	1.07	34	1.34	43.3	1.7	49	1.93	61	2.4	73.5	2.89	89.8	3.54	155.5	6.12
F	7	0.28	7	0.28	8	0.31	10	0.39	12	0.47	14	0.55	16	0.63	16	0.63	18	0.71	23	0.91	25	0.98	28	1.1

Tolerance:  $\pm 0.5\text{mm}$  (1/8"~2")  
 $\pm 0.8\text{mm}$  (2-1/2"~4")

ISO 9001  
BUREAU VERITAS  
Certification



MARQUE DÉPOSÉE  
BUREAU VERITAS  
Certification



TRD  
100



Type  
Approval  
P-13548

CE CRN  
0035 REGISTERED



ATEX  
II2GD

TA-Luft ISO 15848 REACH  
VDI 2440 LOW EMISSION (EC 1907/2006)

ROHS  
2002/95/EC

8F., No.201, Sec. 2, Tiding Blvd., Neihu District, Taipei City 114, Taiwan R.O.C.  
 TEL : +886-2-2658-5800 FAX : +886-2-2658-2266 / 2799-7766

[Http://www.haitima.com.tw](http://www.haitima.com.tw)  
 E-mail : [haitima@seed.net.tw](mailto:haitima@seed.net.tw)