

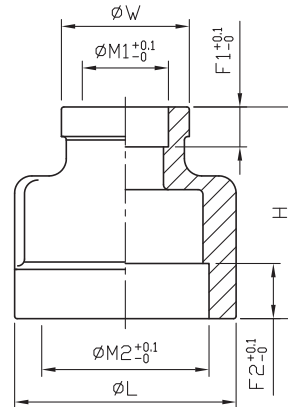
Reducing Socket sw

F43

Class 150

Standard Pattern

SIZE	L		H		W		M1		F1		M2		F2		
	mm	in	mm	in	mm	in	mm	in	mm	in	mm	in	mm	in	
3/8"	1/8"	22	0.87	29	1.14	18.1	0.71	11	0.43	8.1	0.32	17.5	0.69	8.1	0.32
	1/4"	22	0.87	29	1.14	18.2	0.72	14	0.55	8.1	0.32	17.5	0.69	8.1	0.32
1/2"	1/8"	28	1.1	34	1.34	19.5	0.77	11	0.43	8.1	0.32	22	0.87	8.1	0.32
	1/4"	28.5	1.12	34	1.34	19.5	0.77	14	0.55	8.1	0.32	22	0.87	8.1	0.32
3/4"	3/8"	28.5	1.12	34.5	1.36	23	0.91	17.5	0.69	8.1	0.32	22	0.87	8.1	0.32
	1/2"	34	1.34	36.5	1.44	28.2	1.11	17.5	0.69	8.1	0.32	27.5	1.08	9.4	0.37
1"	3/8"	34	1.34	36.5	1.44	28	1.1	22	0.87	8.1	0.32	27.5	1.08	9.4	0.37
	1/2"	41.5	1.63	41.5	1.63	28.5	1.12	17.5	0.69	8.1	0.32	34	1.34	11.2	0.44
	3/4"	41.5	1.63	42	1.65	29	1.14	22	0.87	8.1	0.32	34	1.34	11.2	0.44
1-1/4"	1/2"	41.5	1.63	41.5	1.63	34	1.34	27.5	1.08	9.4	0.37	34	1.34	11.2	0.44
	3/4"	50	1.97	46	1.81	33.7	1.33	22	0.87	8.1	0.32	43.3	1.7	12.7	0.5
	1"	50	1.97	47	1.85	41.6	1.64	34	1.34	11.2	0.44	43.3	1.7	12.7	0.5
1-1/2"	1/2"	50	1.97	46	1.81	34	1.34	27.5	1.08	9.4	0.37	43.3	1.7	12.7	0.5
	3/4"	50	1.97	47	1.85	41.6	1.64	34	1.34	11.2	0.44	43.3	1.7	12.7	0.5
	1"	57	2.24	47	1.85	33.6	1.32	22	0.87	8.1	0.32	49	1.93	12.7	0.5
2"	1-1/4"	57	2.24	51.5	2.03	50	1.97	43.3	1.7	12.7	0.5	49	1.93	12.7	0.5
	1-1/2"	57	2.24	50	1.97	41.5	1.63	34	1.34	11.2	0.44	49	1.93	12.7	0.5
	2"	69.5	2.74	55	2.17	41	1.61	27.5	1.08	9.4	0.37	61	2.4	14.2	0.56
2-1/2"	1"	69.5	2.74	55	2.17	41	1.61	34	1.34	11.2	0.44	61	2.4	14.2	0.56
	1-1/4"	70	2.76	59	2.32	56.5	2.22	43.3	1.7	12.7	0.5	61	2.4	14.2	0.56
	1-1/2"	70	2.76	59	2.32	57	2.24	49	1.93	12.7	0.5	61	2.4	14.2	0.56
3"	1-1/4"	88	3.46	59.5	2.34	50	1.97	43.3	1.7	12.7	0.5	73.5	2.89	14.2	0.56
	1-1/2"	88	3.46	61	2.4	57	2.24	49	1.93	12.7	0.5	73.5	2.89	14.2	0.56
	2"	87	3.43	61	2.4	69.5	2.74	61	2.4	14.2	0.56	73.5	2.89	14.2	0.56
4"	3/4"	101	3.98	61.5	2.42	41.5	1.63	27.5	1.08	9.4	0.37	89.8	3.54	14.2	0.56
	1"	101	3.98	61.5	2.42	41.5	1.63	34	1.34	11.2	0.44	89.8	3.54	14.2	0.56
	1-1/4"	103	4.06	65.5	2.58	50.5	1.99	43.3	1.7	12.7	0.5	89.8	3.54	14.2	0.56
	1-1/2"	103	4.06	65	2.56	57	2.24	49	1.93	12.7	0.5	89.8	3.54	14.2	0.56
	2"	103	4.06	65	2.56	73.5	2.89	61	2.4	14.2	0.56	89.8	3.54	14.2	0.56
4"	2-1/2"	101.5	4	70	2.76	88.3	3.48	73.5	2.89	14.2	0.56	89.8	3.54	14.2	0.56
	2"	128.5	5.06	66	2.6	72.5	2.85	61	2.4	14.2	0.56	115.5	4.55	17.5	0.69
	2-1/2"	128.5	5.06	71	2.8	87.5	3.44	73.5	2.89	14.2	0.56	115.5	4.55	17.5	0.69
4"	3"	130	5.12	77	3.03	102	4.02	89.8	3.54	14.2	0.56	115.5	4.55	17.5	0.69



Tolerance: $\pm 0.5\text{mm}$ (1/8"~2")
 $\pm 0.8\text{mm}$ (2-1/2"~4")



8F., No.201, Sec. 2, Tiding Blvd., Neihu District, Taipei City 114, Taiwan R.O.C.
 TEL : +886-2-2658-5800 FAX : +886-2-2658-2266 / 2799-7766

[Http://www.haitima.com.tw](http://www.haitima.com.tw)
 E-mail : haitima@seed.net.tw