

Item description/product images



Description

Material:

Plate stainless steel 1.4305.
 Anti-slip plate thermoplastic elastomer.

Version:

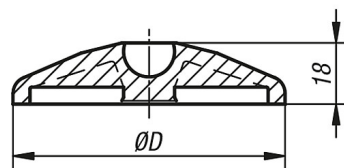
Plate bright.

Note:

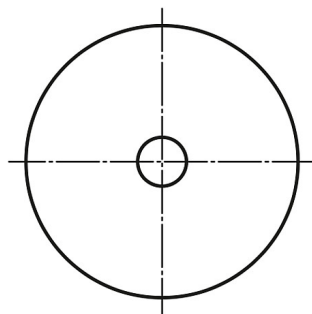
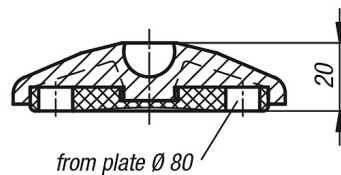
Swivel feet consist of a plate and a threaded spindle. Any plate can be combined with any spindle. The anti-slip plate absorbs vibration and prevents the swivel foot slipping.
 For suitable threaded spindles see article 50-68.

Drawings

Form A
 without locating hole
 without anti-slip plate



Form B
 without locating hole
 with anti-slip plate



Overview of items

Order No.	Form	D	Load rating max. kN
50-64-1	A	30	20
50-64-2	A	40	30
50-64-3	A	45	30
50-64-4	A	50	35
50-64-5	A	60	35
50-64-6	A	80	35
50-64-7	A	100	40
50-64-8	A	120	40
50-65-1	B	30	20
50-65-2	B	40	30
50-65-3	B	45	30
50-65-4	B	50	35
50-65-5	B	60	35
50-65-6	B	80	35

Overview of items

Order No.	Form	D	Load rating max. kN
50-65-7	B	100	40
50-65-8	B	120	40