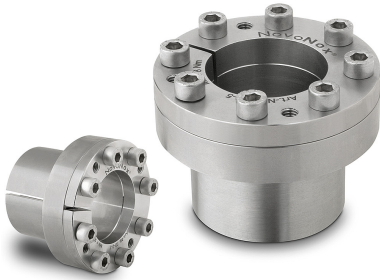


Item description/product images



Description

Material:

Coupling stainless steel 1.4057.

Screws stainless steel 1.4301.

Version:

Bright.

Note:

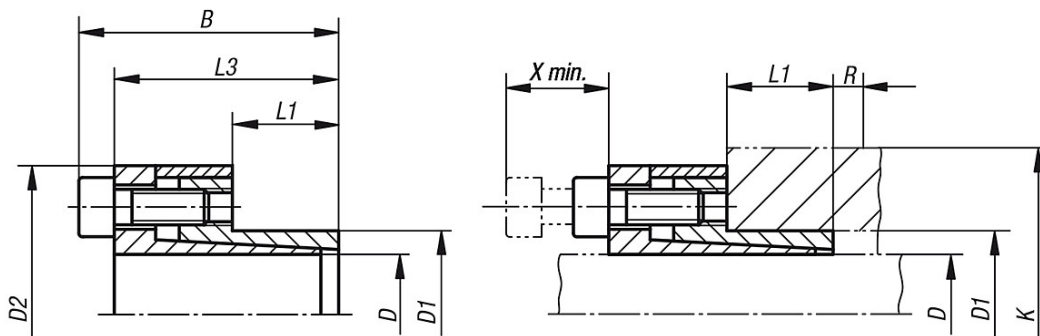
The keyless locking coupling form A is self-centring.

The minimum dimension "X" must be observed if the coupling should be dismantled without removing neighbouring parts.

The minimum value for "K" must be observed when the hub overlap $R \geq 0.5 (K-D1)$.

For further specifications see "Technical Information".

Drawings



Overview of items

Order No.	D	D1	D2	B	L1	L3	Torque M Nm transmissible at tightening torque MS	Axial force F kN transmissible at tightening torque MS	Surface pressure on shaft P N/mm ²	Surface pressure on hub P N/mm ²
70-2-1	20	28	50	45	18	39	97	10	71	51
70-2-2	25	34	56	52	25	46	180	15	62	45
70-2-3	30	41	62	52	25	46	220	15	51	38
70-2-4	35	47	66	59	32	53	340	19	46	34
70-2-5	40	53	75	59	32	53	390	19	40	30
70-2-6	45	59	86	78	45	70	820	36	48	36
70-2-7	50	65	92	78	45	70	910	36	43	33
70-2-8	55	71	98	89	55	81	1.100	41	36	28
70-2-9	60	77	104	89	55	81	1.200	41	33	26

Order No.	Clamping screws DIN 912	Clamping screws tightening torque MS in Nm	Elasticity limit Re (N/mm ²) of the hub material 190 K min. mm	Elasticity limit Re (N/mm ²) of the hub material 320 K min. mm	Elasticity limit Re (N/mm ²) of the hub material 550 K min. mm	Elasticity limit Re (N/mm ²) of the hub material 600 K min. mm	X min. mm
70-2-1	M6	8	35	32	30	30	30
70-2-2	M6	8	41	38	36	36	30
70-2-3	M6	8	48	45	43	43	30
70-2-4	M6	8	54	51	49	49	35
70-2-5	M6	8	60	57	56	55	35
70-2-6	M8	18	69	65	62	62	40
70-2-7	M8	18	75	71	68	68	40
70-2-8	M8	18	80	76	74	74	40
70-2-9	M8	18	86	82	80	80	40

Overview of items
