

Item description/product images

**Description****Material:**

Stainless steel 1.4301.

Version:

Bright.

Note:

Self-centring and zero backlash shaft-hub locking coupling with a very low moment of inertia and minimal space requirement.

The coupling forms a frictional engagement between the shaft and the bore.

Rapid assembly and dismantling with the locking nut.

The connection can be dismantled using an extractor tool.

Concentric tolerance ± 0.01 mm.

Assembly:

The coupling must be assembled grease-free to attain the listed torque.

The coupling must be assembled with its complete length on the shaft.

To attain the maximum torque the shaft and hub must have sufficient tensile strength (min. yield point $Re \geq 350$ N/mm²).

Required tolerances:

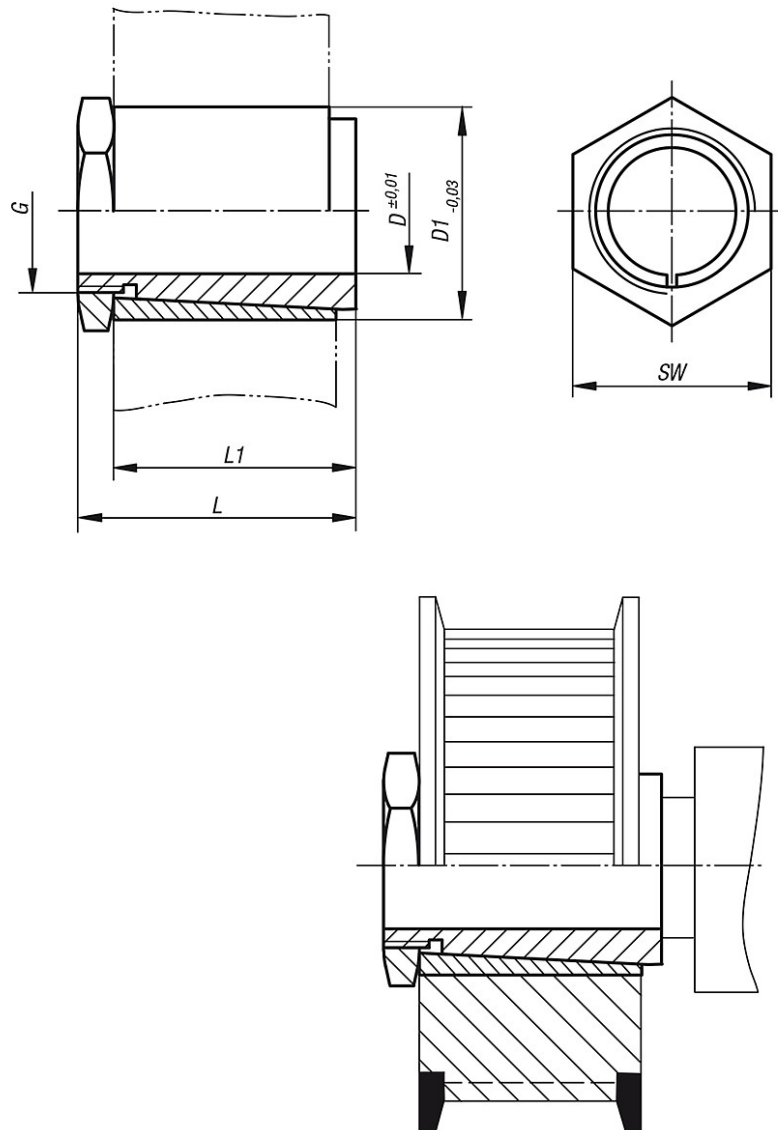
Shaft: h7

Bore: H7

70-11

Shaft-hub locking coupling

Drawings



Overview of items

| Order No. | D | D1 | L | L1 | G | SW | Tightening torque max. Nm | Torque transmissible T Nm |
|-----------|----|----|----|------|--------|----|---------------------------|---------------------------|
| 70-11-1 | 4 | 8 | 15 | 12,5 | M6x0,5 | 8 | 4 | 3 |
| 70-11-2 | 5 | 10 | 15 | 12,5 | M8x0,5 | 10 | 5 | 4 |
| 70-11-3 | 6 | 10 | 15 | 12,5 | M8x0,5 | 10 | 8 | 7 |
| 70-11-4 | 8 | 14 | 22 | 19 | M12x1 | 17 | 15 | 14 |
| 70-11-5 | 10 | 17 | 22 | 18,5 | M15x1 | 19 | 19 | 18 |
| 70-11-6 | 12 | 17 | 22 | 18,5 | M15x1 | 19 | 19 | 18 |
| 70-11-7 | 14 | 20 | 28 | 23 | M17x1 | 22 | 25 | 24 |
| 70-11-8 | 15 | 20 | 28 | 23 | M17x1 | 22 | 25 | 24 |
| 70-11-9 | 16 | 23 | 28 | 23 | M20x1 | 26 | 27 | 26 |
| 70-11-10 | 19 | 25 | 28 | 23 | M22x1 | 27 | 30 | 29 |
| 70-11-11 | 20 | 28 | 28 | 23 | M25x1 | 30 | 32 | 31 |

Overview of items
