



# ULTRA WEAR-RESISTANT SOLUTIONS

*Si-Tec® FOR HIGH ABRASION APPLICATIONS*

## MINING APPLICATIONS



**SPOKANE INDUSTRIES®** provides high quality, high performance wear parts for the mining and rock crusher industries. Using our patented ceramic composite technology and innovative product designs we feature **Si-Tec® Ultra Wear-Resistant** products that provide unequaled abrasion resistance, long wear life and ease of installation.

Many customers report that Si-Tec® Ultra-Wear Resistant products provide more than twice the life of standard parts. Reduce your operating and maintenance costs with increased wear life, fewer part change outs, increased safety and ease of installation.

Our experienced engineering team will work with you to assess existing parts and high wear problems. We will recommend universal solutions and/or design custom solutions for your application that optimize wear life, make installation easier, while effectively managing costs.

### **Si-Tec® ULTRA WEAR-RESISTANT PRODUCTS:**

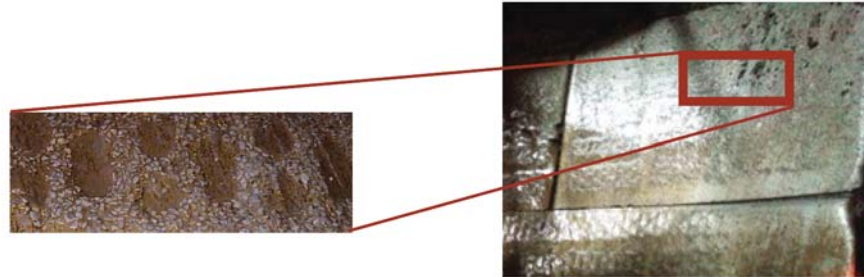
- Increase Wear Life
- Reduce Maintenance Change-outs
- Fast, easy installation
- Reduced liner cost per ton of ore processed
- Universal shapes and sizes
- Custom shapes and sizes





## SPOKANE INDUSTRIES' PATENTED CERAMIC COMPOSITE TECHNOLOGY

Si-Tec® is a patented ceramic/high-chrome white iron composite that resists wear significantly longer than high-chrome white iron alone.



### UNIVERSAL-SIZE Si-Tec® COMPOSITES

In addition to custom chute liners, we offer an assortment of standard-size wear products.

Description	Part #	L x W x H (mm)	Weight (kg)	Hole Ctrs. (mm)	Bolt Hole qty/type/size
Brick Liner	109-3019FE	290 x 100 x 100	20.9	150	2, mill m24
Brick Liner	109-3020FE	590 x 100 x 100	43.2	225	3, mill m24
Brick Liner, T-slot	109-3026FE	290 x 100 x 100	20.9	150	2, Sqr Head 32mm
Brick Liner, T-slot	109-3027FE	450 x 100 x 100	43.2	225	2, Sqr Head 32mm
Edge Liner	109-3018FE	294 x 135 x 132	27.3	150	2, std m20
Skirt Board	110-0001FE	400 x 200 x 50	26.8	200	2, mill m19
Skirt Board	109-3016FE	910 x 300 x 50	66.8	610	2, hex m19
Wear Bar	109-3012FE	457 x 178 x 38	20.5	356	2, hex m19
Wear Bar	110-0006FE	457 x 100 x 38	13.2	150	3, hex m20
Wear Plate	109-3021FE	298 x 203 x 50	21.8	152	2, mill m24
Wear Plate	109-3025FE	298 x 203 x 100	43.6	152	2, mill m24
Wear Plate	109-3010FE	300 x 150 x 40	13.9	150	2, mill m18
Wear Plate	109-3011FE	300 x 300 x 40	25.5	150	2, mill m18
Wear Plate	109-3015FE	300 x 300 x 40	25.0	150	4, mill m18
Wear Plate	109-3022FE	349 x 203 x 50	25.5	203	2, mill m24
Wear Plate	109-3023FE	349 x 203 x 100	50.9	203	2, mill m24
Wear Plate	109-3017FE	356 x 356 x 40	38.6	203	4, mill m18
Wear Plate	109-3024FE	430 x 290 x 50	44.5	260 x 150	4, mill m24

#### TYPICAL APPLICATIONS:

- Chute Liners
- Skirt Board Liners
- Wear Plates
- Hanging Liners
- Deflector Plates
- Curtain Liners
- Ledge Liners
- Feeder Liners
- Middle Feed Liners
- Wear Bar



For the latest on Universal and Custom Si-Tec® products, contact us at 1-800-541-3601