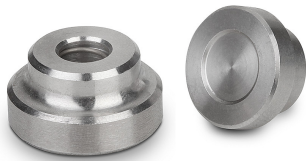


Item description/product images

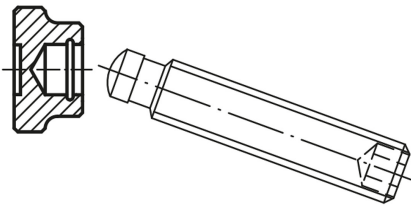


Description

Material:
 Stainless steel 1.4404.

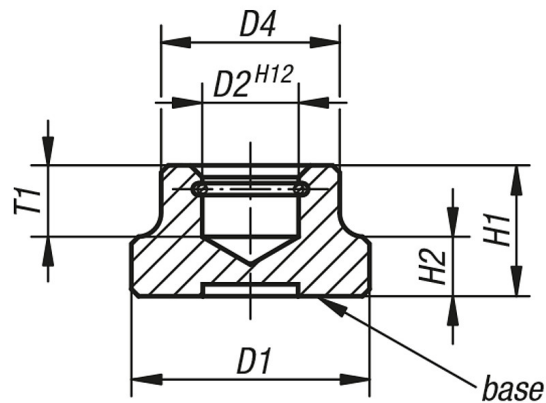
Version:
 Bright.

Note:
 To assemble place the thrust point of the grub screw in the opening, lean it as far as possible to the side and push down. The snap ring is supplied ready assembled.



Drawings

Form S
 thrust pad with snap ring



Overview of items

Order No.	D1	D2	D4	H1	H2	T1	For grub screws with trust point DIN 6332
80-106-20	12	4,6	10	7	2,5	4	M6
80-106-21	16	6,1	12	9	4	5	M8
80-106-22	20	8,1	15	11	5	6	M10
80-106-23	25	8,1	18	13	6	7	M12
80-106-24	32	12,1	22	15	7	7,5	M16