

Item description/product images

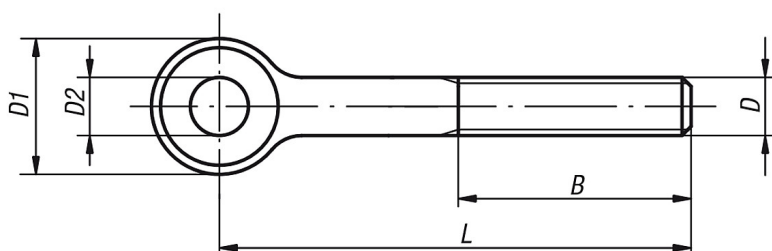


Description

Material:
 Stainless steel 1.4301 / 1.4401

Version:
 Bright.

Drawings



Overview of items

Order No.	Material	D	L	D1	D2	B
80-22-1	1.4301	M6	40	14	6	18
80-22-2	1.4301	M6	50	14	6	18
80-22-3	1.4301	M6	60	14	6	18
80-22-4	1.4301	M6	70	14	6	18
80-22-5	1.4301	M8	50	18	8	22
80-22-6	1.4301	M8	60	18	8	22
80-22-7	1.4301	M8	70	18	8	22
80-22-8	1.4301	M8	80	18	8	22
80-22-9	1.4301	M8	90	18	8	22
80-22-10	1.4301	M8	100	18	8	22
80-22-11	1.4301	M10	50	20	10	26
80-22-12	1.4301	M10	60	20	10	26
80-22-13	1.4301	M10	70	20	10	26
80-22-14	1.4301	M10	80	20	10	26
80-22-15	1.4301	M10	90	20	10	26
80-22-16	1.4301	M10	100	20	10	26
80-22-17	1.4301	M10	120	20	10	26
80-22-18	1.4301	M12	60	25	12	30
80-22-19	1.4301	M12	70	25	12	30
80-22-20	1.4301	M12	80	25	12	30
80-22-21	1.4301	M12	90	25	12	30
80-22-22	1.4301	M12	100	25	12	30
80-22-23	1.4301	M12	120	25	12	30
80-22-24	1.4301	M12	150	25	12	36
80-22-25	1.4301	M16	80	32	16	38
80-22-26	1.4301	M16	100	32	16	38
80-22-27	1.4301	M16	120	32	16	38
80-22-28	1.4301	M16	150	32	16	44
80-22-29	1.4301	M16	180	32	16	44
80-22-30	1.4301	M20	100	40	18	46
80-22-31	1.4301	M20	150	40	18	52
80-22-32	1.4301	M20	200	40	18	52

Overview of items

Order No.	Material	D	L	D1	D2	B
80-23-1	1.4401	M6	40	14	6	18
80-23-2	1.4401	M6	50	14	6	18
80-23-3	1.4401	M6	60	14	6	18
80-23-4	1.4401	M6	70	14	6	18
80-23-5	1.4401	M8	50	18	8	22
80-23-6	1.4401	M8	60	18	8	22
80-23-7	1.4401	M8	70	18	8	22
80-23-8	1.4401	M8	80	18	8	22
80-23-9	1.4401	M8	90	18	8	22
80-23-10	1.4401	M8	100	18	8	22
80-23-11	1.4401	M10	50	20	10	26
80-23-12	1.4401	M10	60	20	10	26
80-23-13	1.4401	M10	70	20	10	26
80-23-14	1.4401	M10	80	20	10	26
80-23-15	1.4401	M10	90	20	10	26
80-23-16	1.4401	M10	100	20	10	26
80-23-17	1.4401	M10	120	20	10	26
80-23-18	1.4401	M12	60	25	12	30
80-23-19	1.4401	M12	70	25	12	30
80-23-20	1.4401	M12	80	25	12	30
80-23-21	1.4401	M12	90	25	12	30
80-23-22	1.4401	M12	100	25	12	30
80-23-23	1.4401	M12	120	25	12	30
80-23-24	1.4401	M12	150	25	12	36
80-23-25	1.4401	M16	80	32	16	38
80-23-26	1.4401	M16	100	32	16	38
80-23-27	1.4401	M16	120	32	16	38
80-23-28	1.4401	M16	150	32	16	44
80-23-29	1.4401	M16	180	32	16	44
80-23-30	1.4401	M20	100	40	18	46
80-23-31	1.4401	M20	150	40	18	52
80-23-32	1.4401	M20	200	40	18	52