

Item description/product images


Description
Material:

Ring and bolt Duplex steel 1.4462.

Version:

Forged ring, pentagon shaped, 360° swivel - adjusts to load position.

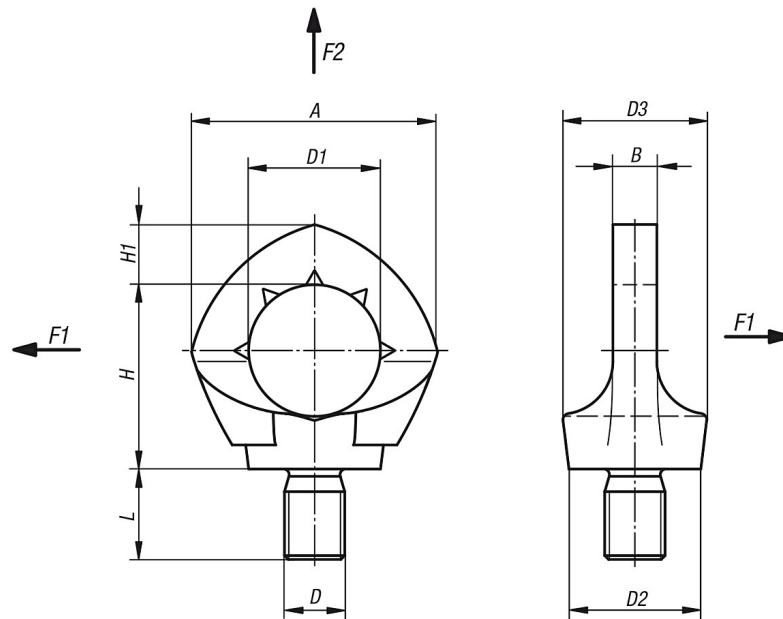
Note:

Captive mounted bolt. 100% tested for faults. Patented wear indicators on ring body. Clear nominal carrying capacity notation for the load adverse zones F1. 4x safety factor against breakage.

Advantages:

50% more load capacity compared to DIN 580 ring bolt, without restriction in any direction.

 Drawings


 Overview of items

Order No.	D	D1	D2	D3	L	H	H1	B	A	F1 max. kN	F2 max. kN
80-108-1	M12	30	30	32	18	42	14	10	56	6	12
80-108-2	M16	35	35	37	24	49	16	12	65	12	24
80-108-3	M20	40	40	43	30	57	19	16	74	18	36
80-108-4	M24	48	50	53	35	69	24	19	92	25	52