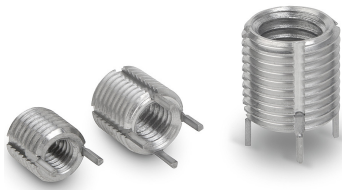


**Item description/product images**



**Description**

**Material:**  
Stainless steel 1.4305.

**Version:**  
Passivated.

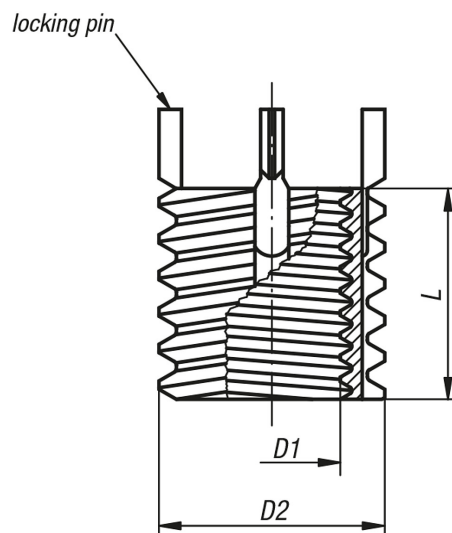
**Note:**  
Thread inserts allow the reuse or repair of damaged, stripped or cold welded threads. This makes possible the recovery of expensive products that would normally be rejected.  
Thread inserts are suitable for use in various materials, including light metals and castings.  
Inserts with female threads larger than M6 are supplied with four locking pins instead of two.

Permitted dimensional deviation:  
For the listed threads the tolerance should be H6 for female threads and g6 for male threads. Other sizes  $\pm 0.25$  mm.

For installation instructions see "Technical Information".

- Advantages:**
- Easier and quicker installation.
  - The insert is fixated with pins that prevent twisting due to torsion or vibration.

**Drawings**



**Overview of items**

Order No.	D1 Internal thread	D2 External thread	L Length	Core drill $\emptyset$	Removal drill $\emptyset$
80-100-1	M5	M8	8	6,9	5,5
80-100-2	M6	M10x1,25	10	8,8	7,5
80-100-3	M8	M12x1,25	12	10,8	9,5

### Overview of items

---

Order No.	D1 Internal thread	D2 External thread	L Length	Core drill Ø	Removal drill Ø
80-100-4	M8x1	M12x1,25	12	10,8	9,5
80-100-5	M10	M14x1,5	14	12,8	11,5
80-100-6	M10x1,25	M14x1,5	14	12,8	11,5
80-100-7	M12	M16x1,5	16	14,8	13,5
80-100-8	M12x1,25	M16x1,5	16	14,8	13,5