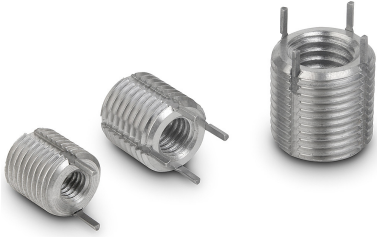


Item description/product images



Description

Material:

Stainless steel 1.4305.

Version:

Passivated.

Note:

Thread inserts allow the reuse or repair of damaged, stripped or cold welded threads. This makes possible the recovery of expensive products that would normally be rejected.

Thread inserts are suitable for use in various materials, including light metals and castings.

Inserts with female threads larger than M6 are supplied with four locking pins instead of two.

Reinforced thread inserts have a thicker cross section for situations where higher loading is required.

Permitted dimensional deviation:

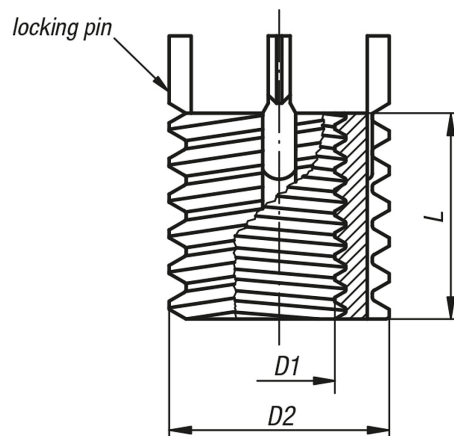
For the listed threads the tolerance should be H6 for female threads and g6 for male threads. Other sizes ± 0.25 mm.

For installation instructions see "Technical Information".

Advantages:

- Easier and quicker installation.
- The insert is fixated with pins that prevent twisting due to torsion or vibration.

Drawings



Overview of items

Order No.	D1 Internal thread	D2 External thread	L Length	Core drill \emptyset	Removal drill \emptyset
80-101-1	M4	M8	8	6,9	5,5
80-101-2	M5	M10 x 1,25	10	8,8	7,5
80-101-3	M6	M12x1,25	12	10,8	9,5
80-101-4	M8	M14x1,5	14	12,8	11,5

Overview of items

Order No.	D1 Internal thread	D2 External thread	L Length	Core drill Ø	Removal drill Ø
80-101-5	M8x1	M14x1,5	14	12,8	11,5
80-101-6	M10	M16x1,5	16	14,8	13,5
80-101-7	M10x1,25	M16x1,5	16	14,8	13,5
80-101-8	M12	M18x1,5	18	16,8	15,5
80-101-9	M12x1,25	M18x1,5	18	16,8	15,5
80-101-10	M16	M22x1,5	22	20,7	17,8
80-101-11	M16x1,5	M22x1,5	22	20,7	17,8
80-101-12	M20	M30x2	30	28	25,8
80-101-13	M20x1,5	M30x2	30	28	25,8
80-101-14	M24	M33x2	33	31	28,8
80-101-15	M24x2	M33x2	33	31	28,8