

Item description/product images



Description

Material:

Hinge stainless steel 1.4401.
 Pin stainless steel 1.4104.

Version:

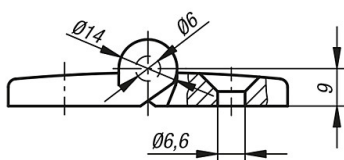
High-gloss polished.

Note:

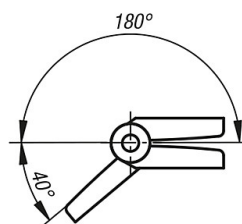
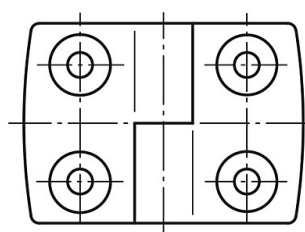
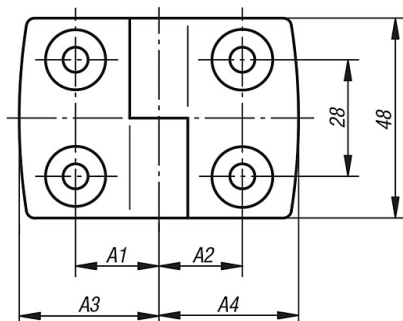
Lift-off hinge for surface elements and aluminium profiles, right and left versions. Pin end closed. Countersunk holes to minimize dirt accumulation.

Drawings

lift-off, left



lift-off, right



Overview of items

Order No.	Version	A1	A2	A3	A4	Load capacity N
100-55-1	lift-off, right	15	15	26	26	5.000
100-55-2	lift-off, right	17,5	17,5	29,5	29,5	5.000
100-55-3	lift-off, right	22,5	22,5	38,5	38,5	5.000
100-55-4	lift-off, right	25	25	43,5	43,5	5.000
100-55-5	lift-off, right	32,5	32,5	57,5	57,5	5.000

100-55 / 100-56

Lift-off hinges right / left

Overview of items

Order No.	Version	A1	A2	A3	A4	Load capacity N
100-56-1	lift-off, left	15	15	26	26	5.000
100-56-2	lift-off, left	17,5	17,5	29,5	29,5	5.000
100-56-3	lift-off, left	22,5	22,5	38,5	38,5	5.000
100-56-4	lift-off, left	25	25	43,5	43,5	5.000
100-56-5	lift-off, left	32,5	32,5	57,5	57,5	5.000