

Item description/product images



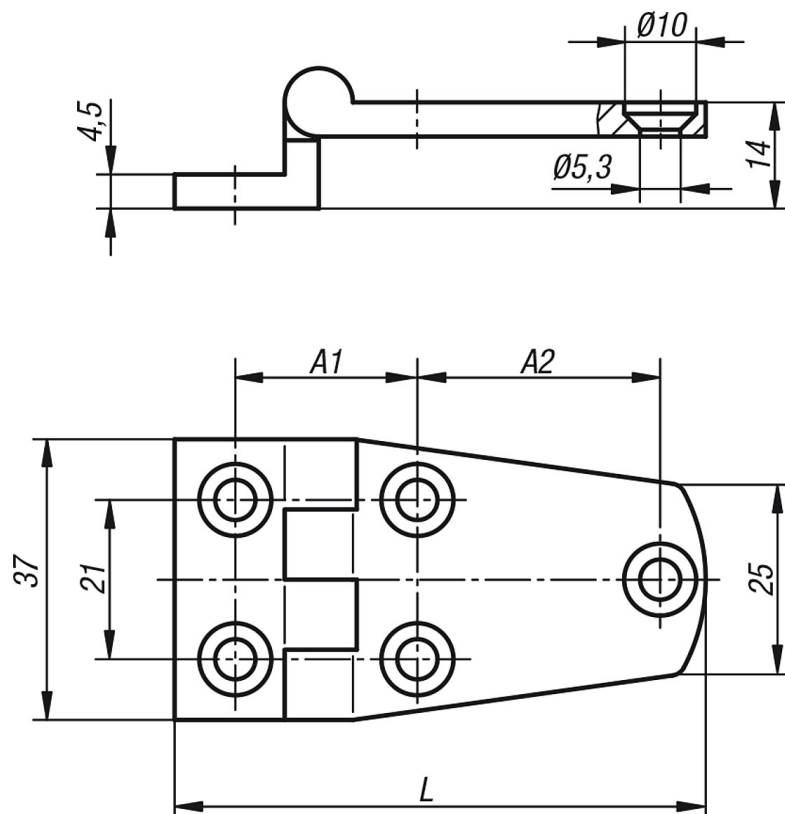
**Description**

**Material:**  
 Stainless steel 1.4401.

**Version:**  
 High-gloss polished.

**Note:**  
 Trapezoidal screw-on hinge with offset. Saltwater- and acid-resistant. The opening angle is 180°.

Drawings



Overview of items

| Order No. | A1 | A2 | L  | Approx. weight kg |
|-----------|----|----|----|-------------------|
| 100-25-1  | 24 | 18 | 54 | 0,073             |
| 100-25-2  | 24 | 32 | 70 | 0,1               |