

Item description/product images

**Description****Material:**

Stainless steel 1.4301.

Version:

Bright.

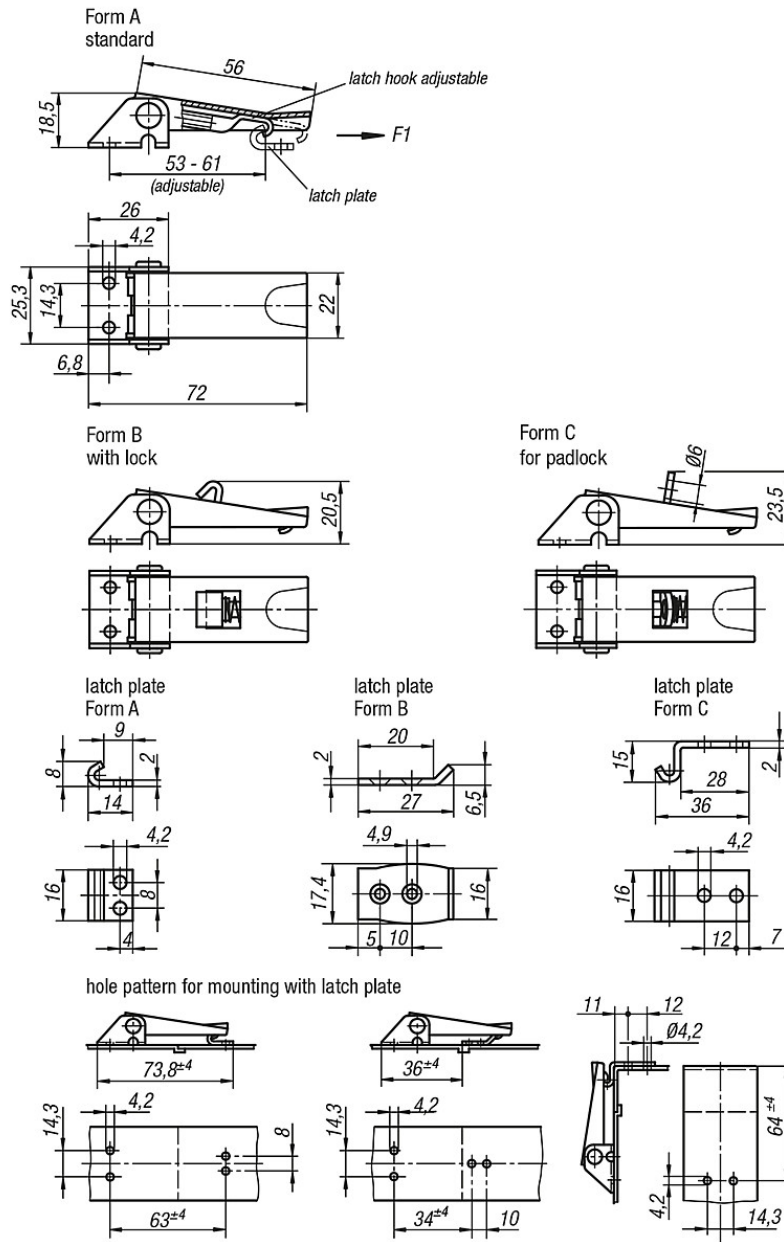
Note:

Adjustable latches serve as secure locking systems for industrial applications. The overcentre position secures it against vibration. After engaging the hook into the catch plate the parts to be joined can be drawn together by up to 5 mm by pushing the lever down. The hook can be adjusted using the M5 spindle to compensate for tolerances or to attain the correct tension. The latch can be screwed down or riveted.

Any catch plate can be combined with any latch.

Please order the desired catch plate separately.

Drawings



Overview of items

Order No.	Article description	Form	Retaining force F1 N
100-70-1	Adjustable toggle latch Form A SS 1.4301 72x25,3 holes uncovered	A	1.000
100-70-2	Adjustable toggle latch Form B SS 1.4301 72x25,3 with lock	B	1.000
100-70-3	Adjustable toggle latch Form C SS 1.4301 72x25,3 with padlock hole	C	1.000

Order No.	Article description	Form
100-70-4	Toggle hook Form A SS 1.4301 14x16 with holes	A
100-70-5	Toggle hook Form B SS 1.4301 27x16 with holes	B
100-70-6	Toggle hook Form C cranked SS 1.4301 37,5x15x16 with holes	C

100-70

Latches adjustable fastening holes visible

Overview of items
