

# 100-32

## Catch plates for DIN 3133 latches

### Item description/product images

---



### Description

**Material:**

Stainless steel 1.4301.

**Version:**

Vibratory tumbled.

**Note:**

100-32-1 for locking in-line part.

100-32-2 for locking round corners.

Suitable latches see 100-30-1 and 100-31-1.

# 100-32

## Catch plates for DIN 3133 latches

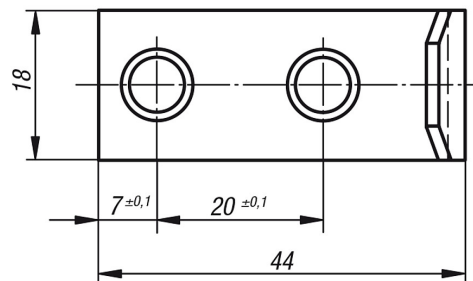
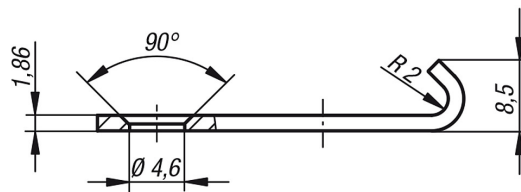
### Item description/product images

---



### Drawings

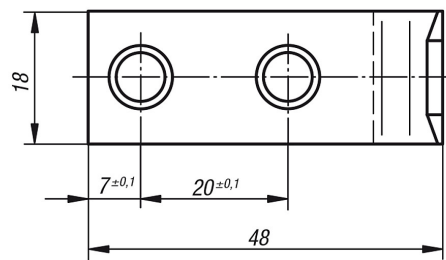
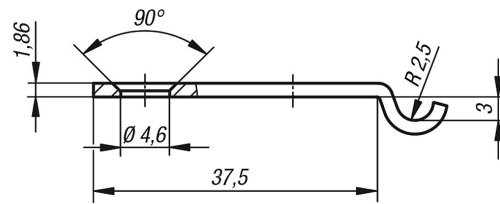
---



# 100-32

## Catch plates for DIN 3133 latches

### Drawings



### Overview of items

Order No.	Version	Dimensions
100-32-1	straight	siehe Zeichnung
100-32-2	swan-necked	siehe Zeichnung