

Item description/product images



Description

Material:

Housing stainless steel 1.4301.
 Wheel body: polyamide
 Tread: polyurethane

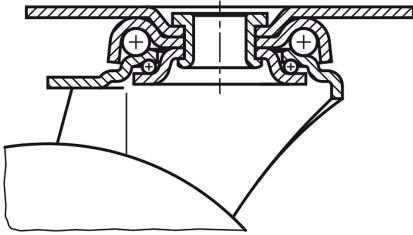
Version:

Bearing housing made of high-quality, stainless chromium-nickel steel with heavy fork and base plate, with double ball bearings in the swivel head, with swivel head seal, with very stable head bolt. Bearing type: ball bearings, stainless steel.

Note:

All components such as ball bearings and axle material are rust and acid resistant.
 Wheel axle screwed, surface vibration-ground

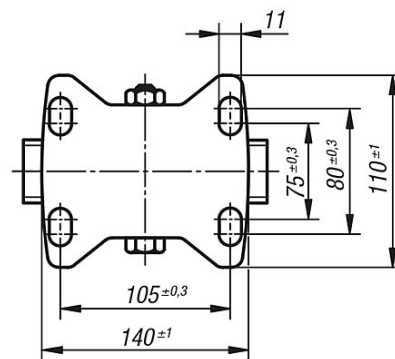
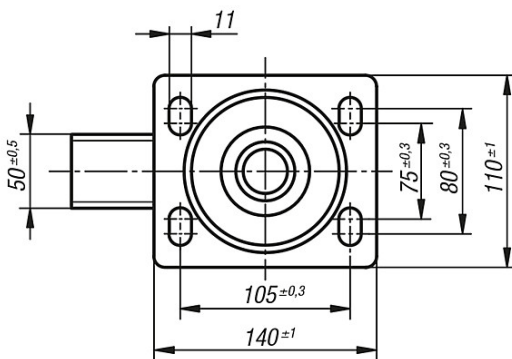
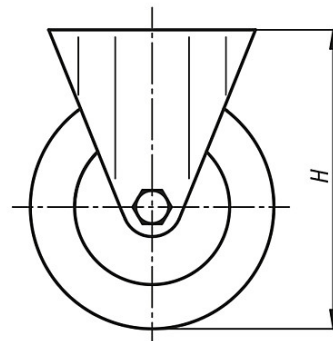
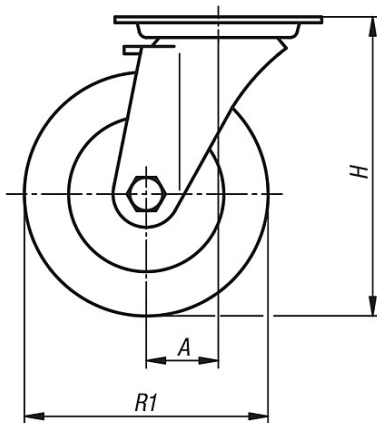
Swivel head bearing:



Drawings

Swivel castor

Fixed castor



110-70

Heavy-duty castors

Overview of items

Order No.	Version	A	H	R1	Permissible load kg
110-70-1	Castors	62	245	200	800

Order No.	Version	H	R1	Permissible load kg
110-70-2	Fixed castors	245	200	800