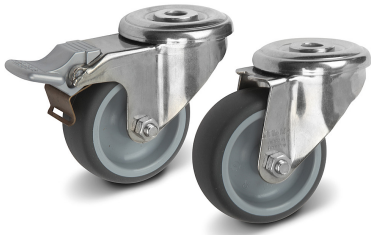
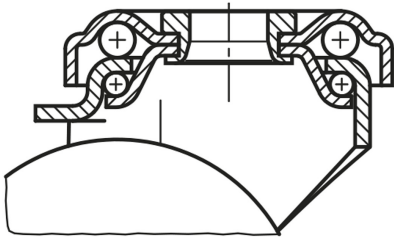


Item description/product images



swivel head bearing:



Description

Material:

Housing in stainless steel 1.4301;

Wheel body: polyamide;

Tread: polyurethane

Version:

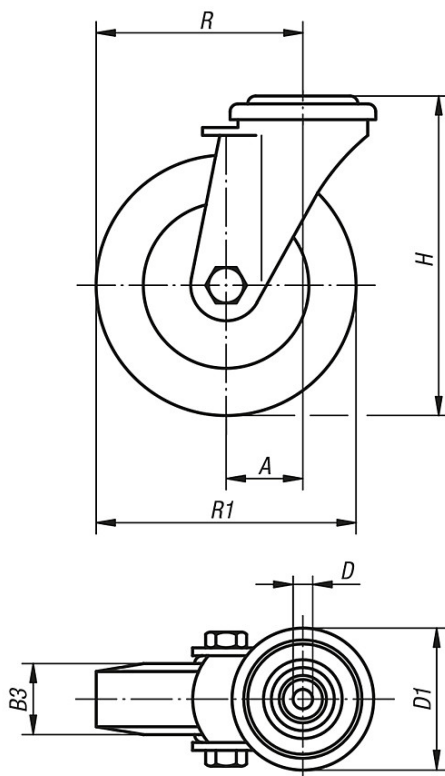
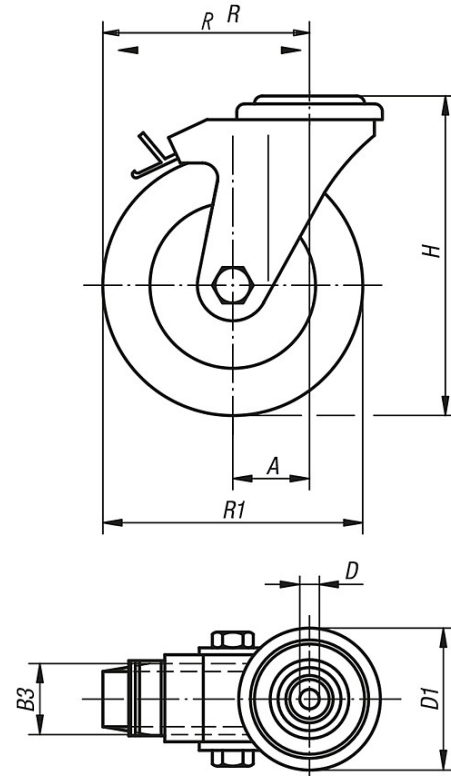
Pressed housing; swivel castor housing with double ball bearing in the swivel head; wheels with slide bearing.

Note:

All mounting parts are rust- and acid-resistant. Wheel axle bolted, surface vibration-ground. Temperature resistant from -30 °C up to +90 °C.

Drawings

swivel castor

swivel castor
with stop fix

Overview of items

Order No.	Version	A	B3	D	D1	H	R	R1	Permissible load kg
110-81-1	Castor	38	32	13	70	102	78	80	125
110-81-2	Castor	36	30	13	70	125	86	100	150
110-81-3	Castor	40	30	13	70	150	102.5	125	150
110-81-4	Castor	54	54	13	88	195	134	160	300
110-81-5	Castor	54	54	13	88	235	154	200	300

Order No.	Version	A	B3	D	D1	H	R	R1	Permissible load kg
110-81-10	Castors with "stop-fix"	38	32	13	70	102	78	80	125
110-81-11	Castors with "stop-fix"	36	30	13	70	125	86	100	150
110-81-12	Castors with "stop-fix"	40	30	13	70	150	102.5	125	150
110-81-13	Castors with "stop-fix"	40	54	13	88	195	120	160	300
110-81-14	Castors with "stop-fix"	50	54	13	88	235	150	200	300