

BEER TAPS PART # C726



Product Name

**Standard European Beer Flow Control Faucet with Stainless Steel
304 Compensator & ABS Spout**

Body Material

Chrome Plated Brass

Compensator

SS 304



We have this tap C726 in different sizes of shank length bore ID

Part No.	Shank Length	Bore ID	Thread(G)	Material	Finish
C726X35X7	35 mm	7 mm	5/8"	Brass	Chrome Plated
C726X55X7	55 mm	7 mm	5/8"	Brass	Chrome Plated
C726X65X7	65 mm	7 mm	5/8"	Brass	Chrome Plated
C726X35X10	35 mm	10 mm	5/8"	Brass	Chrome Plated
C726X55X10	55 mm	10 mm	5/8"	Brass	Chrome Plated
C726X65X10	65 mm	10 mm	5/8"	Brass	Chrome Plated
C726GX35X7	35 mm	7 mm	5/8"	Brass	Vibrant Gold Colour
C726GX55X7	55 mm	7 mm	5/8"	Brass	Vibrant Gold Colour
C726GX65X7	65 mm	7 mm	5/8"	Brass	Vibrant Gold Colour
C726GX35X10	35 mm	10 mm	5/8"	Brass	Vibrant Gold Colour
C726GX55X10	55 mm	10 mm	5/8"	Brass	Vibrant Gold Colour
C726GX65X10	65 mm	10 mm	5/8"	Brass	Vibrant Gold Colour
C726JGX46X7	46 mm	7 mm	5/8"	Brass	Chrome Plated

Product Specification subject to change without notice.
Any act of copying, distributing or disclosing of this datasheet
will be liable against policy of property rights of Pacific Merchants.

Krome Dispense
Ph: 0181 - 2600009
Mob: 9814203010
www.kromedispense.com

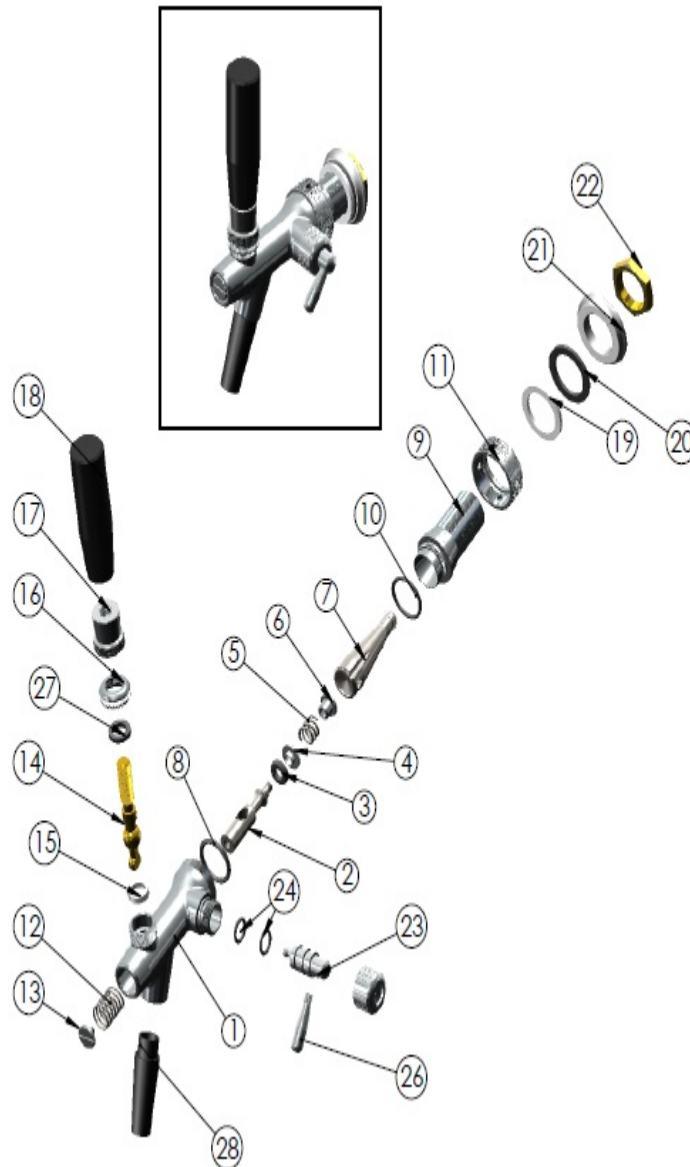
If you have any other technical question about this product please email us at info@kromedispense.com

Pacific Merchants, D-74,Focal Point Extn.,Jalandhar-144004,Punjab,India

BEER TAPS PART NO: #C726



Exploded View



Product Specification subject to change without notice.
Any act of copying, distributing or disclosing of this datasheet
will be liable against policy of property rights of Pacific Merchants.

Krome Dispense
Ph: 0181 - 2600009
Mob: 9814203010
www.kromedispense.com

If you have any other technical question about this product please email us at info@kromedispense.com

Pacific Merchants, D-74,Focal Point Extn.,Jalandhar-144004,Punjab,India