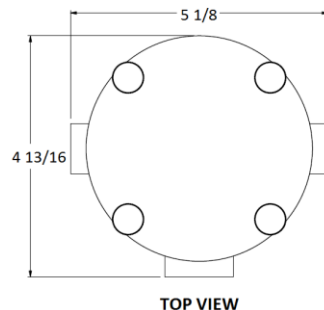
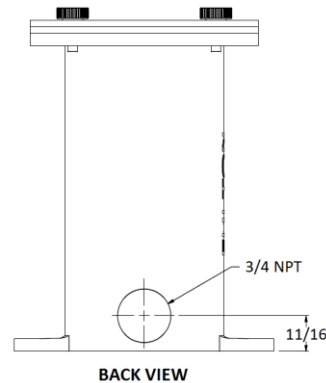
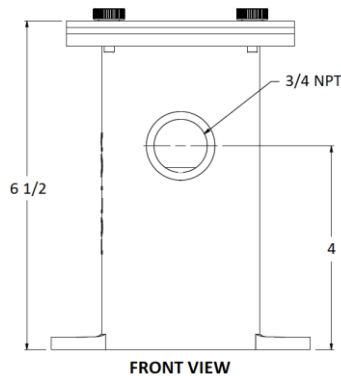


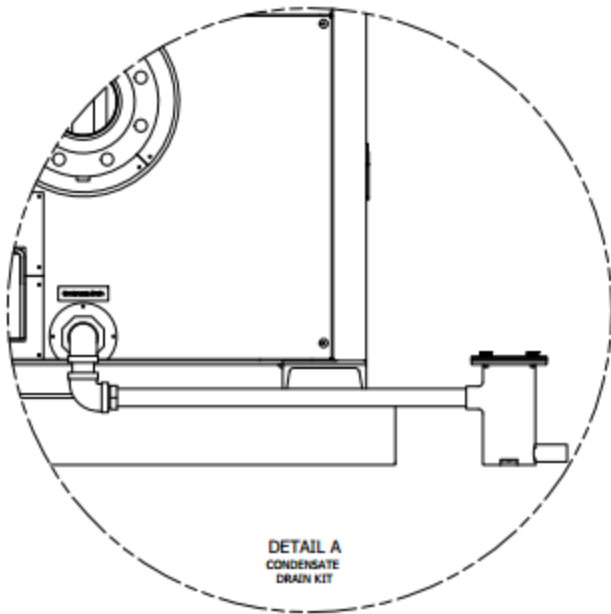
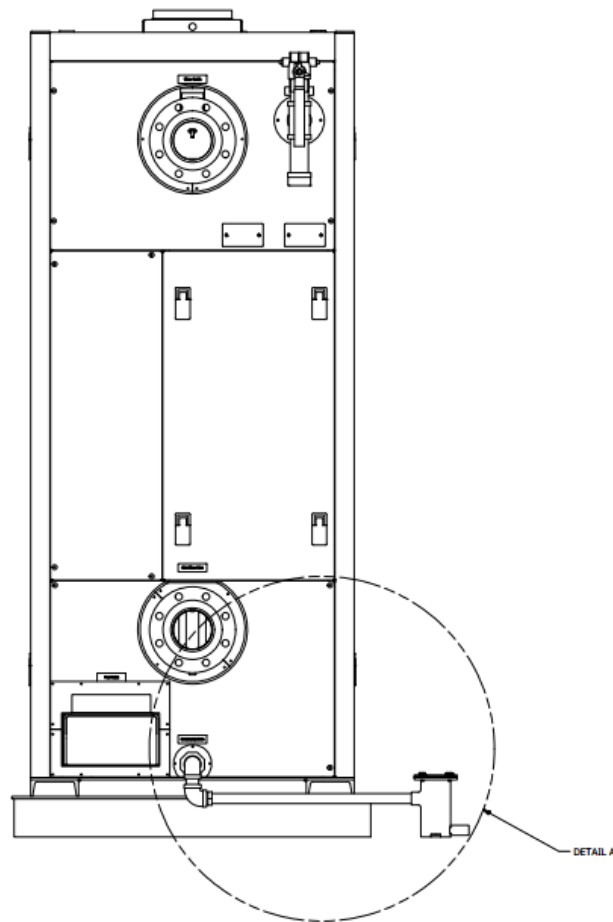
The purpose of the Condensate Drain Trap for Single Boilers is to allow for the removal of flue gas condensate from one condensing boiler while preventing flue gases from escaping into the boiler room. A condensate drain trap is required for every installation.

- The drain outlet should be piped to a pH Neutralization kit or piped to an appropriate drain.
- Galvanized or stainless steel piping is required. **Copper, plastic, or carbon steel piping is not acceptable.**
- Not for use with Fulton Pulse boilers.
- [Note 1] Not for use with the Vantage VTG-5000, VTG-5000DF, VTG-6000 or VTG-6000DF boilers.

Condensate Drain Trap	Construction	Connections	Application Requirements
Single Boiler Trap P/N: 4-57-005500	Cast Aluminum Condensate Tank	3/4" Inlet 3/4" Outlet	<ul style="list-style-type: none"> • Will accept up to a maximum boiler capacity of 4,000,000 BTU/hr • One drain trap required per boiler • Without a pump, gravity drain only

Condensate Drain Trap for Single Boiler Detail





Notes:

1. Header must be level or slightly pitched toward the condensate drain trap.
2. Galvanized or stainless steel piping is required. **Copper, plastic, or carbon steel piping is not acceptable.**
3. The condensate drain trap outlet connection must be lower than the boiler condensate drain outlet connection.
4. The maximum boiler input capacity to attach per condensate drain trap is 4,000,000 BTU/hr.
5. One single boiler condensate drain kit is required per boiler.
6. Annual inspection for functionality of tank and piping is recommended.